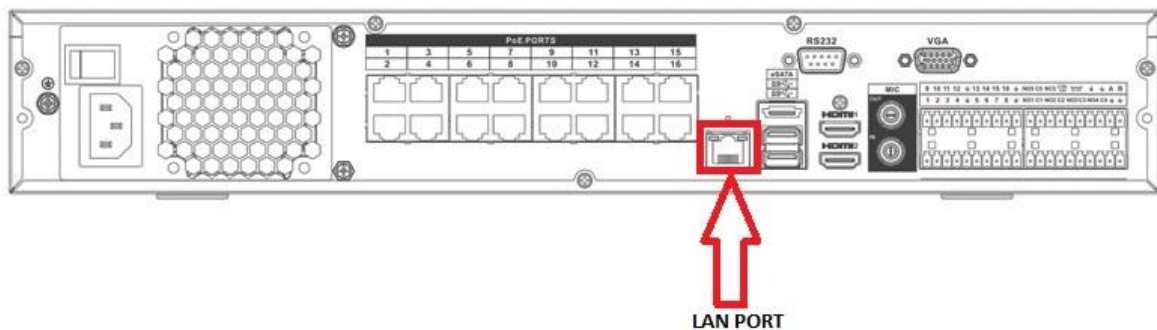


SmartPSS Quick Start Guide

Basic Network Connectivity.

Connect the Cat5/6 Cable directly to LAN port of recorder to your modem or router. See **Example Figure 1-1**

Figure 1-1



Proceed to Main Menu -> Network Settings -> TCP/IP

TCP/IP is your first selected option, in TCP/IP Change Static to DHCP to allow the recorder to pick up an IP address automatically from the connected network.

Note: You can disable DHCP once the recorder has an IP address of the same range of the network. (This is optional)

See Example Figure 1-2

Figure 1-2



Proceed to Main Menu -> Network Settings -> P2P Setting
Enable P2P.

Once enabled right click via mouse back to main menu, and
Proceed back to Main Menu -> Network Settings -> P2P
Setting. This will refresh the P2P setting and will say connect
success. **See Example Figure 1-3**

Figure 1-3



SmartPSS Installation.

Download SmartPSS Via Rhinoco.com.au

Short Link to SmartPSS: <https://goo.gl/UewYN9>

Once the installer wizard has been downloaded select the executable file and run it.

Select the language and click next.

Choose the file path of the installation and click install.

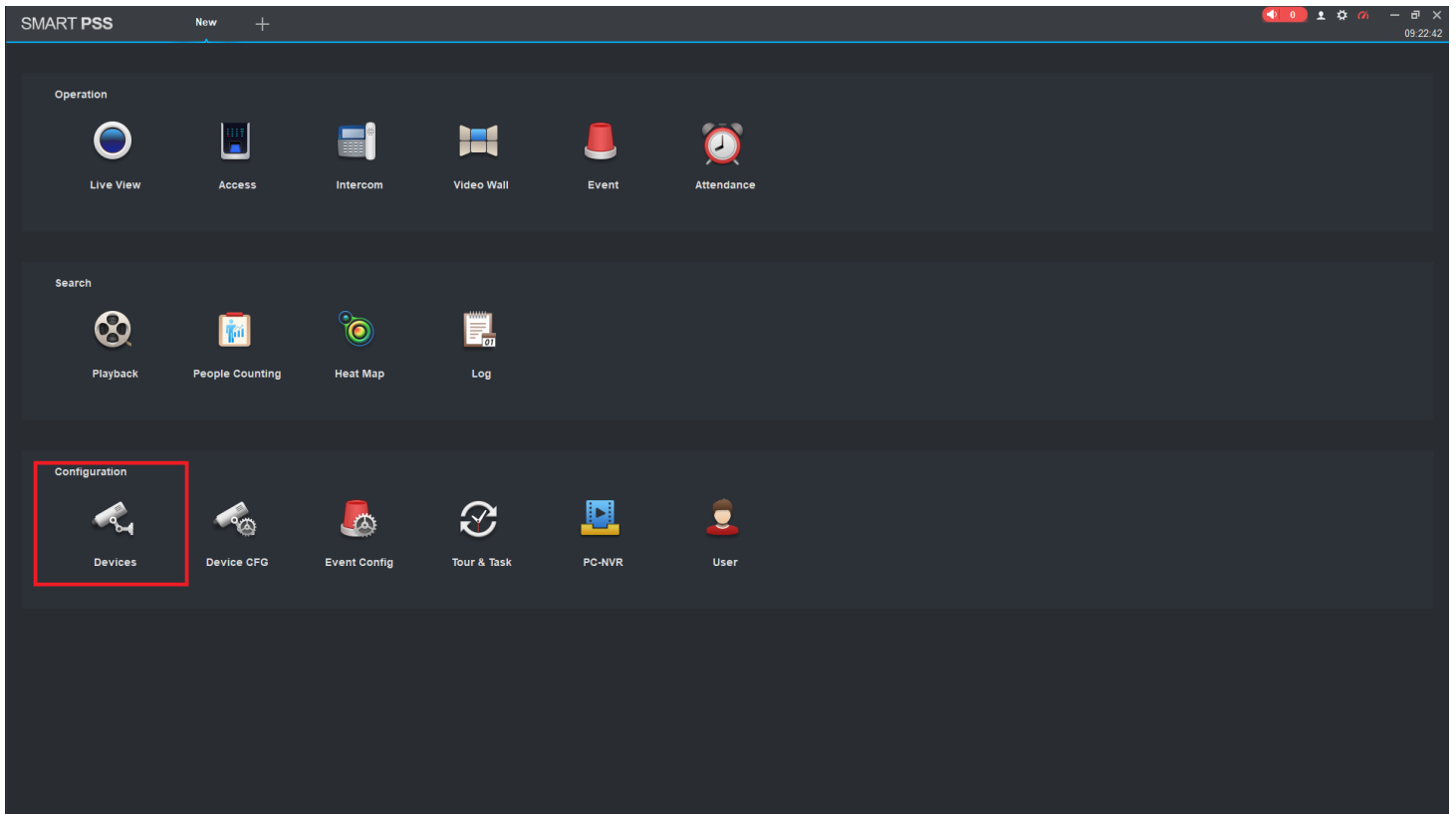
Run the application. Once open you need to create a login for the application.

You will be on a menu with operation, Search, and configuration. Under configuration select devices.

You will be on a menu with operation, Search, and configuration. Under configuration select devices.

See Example Figure 2-1

Figure 2-1



Under the devices tab you will see auto search, and add.

You will use the manual add option **See Example Figure 2-2**

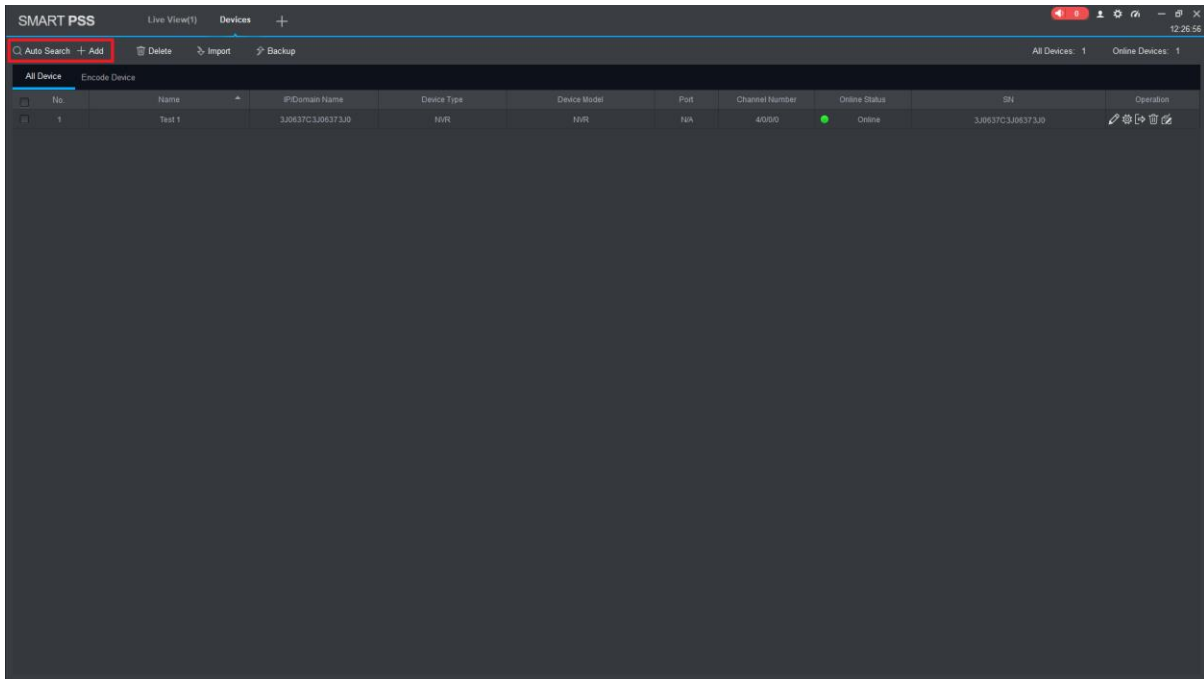
Note: Please refer to figure 1-1 on how to connect to recorder to a network and figure 1-3 on how to enable P2P.

You will need to have the following details from your recorder.

P2P serial number, IP/Domain,

Username and Password of the admin account on the recorder.

Figure 2-2



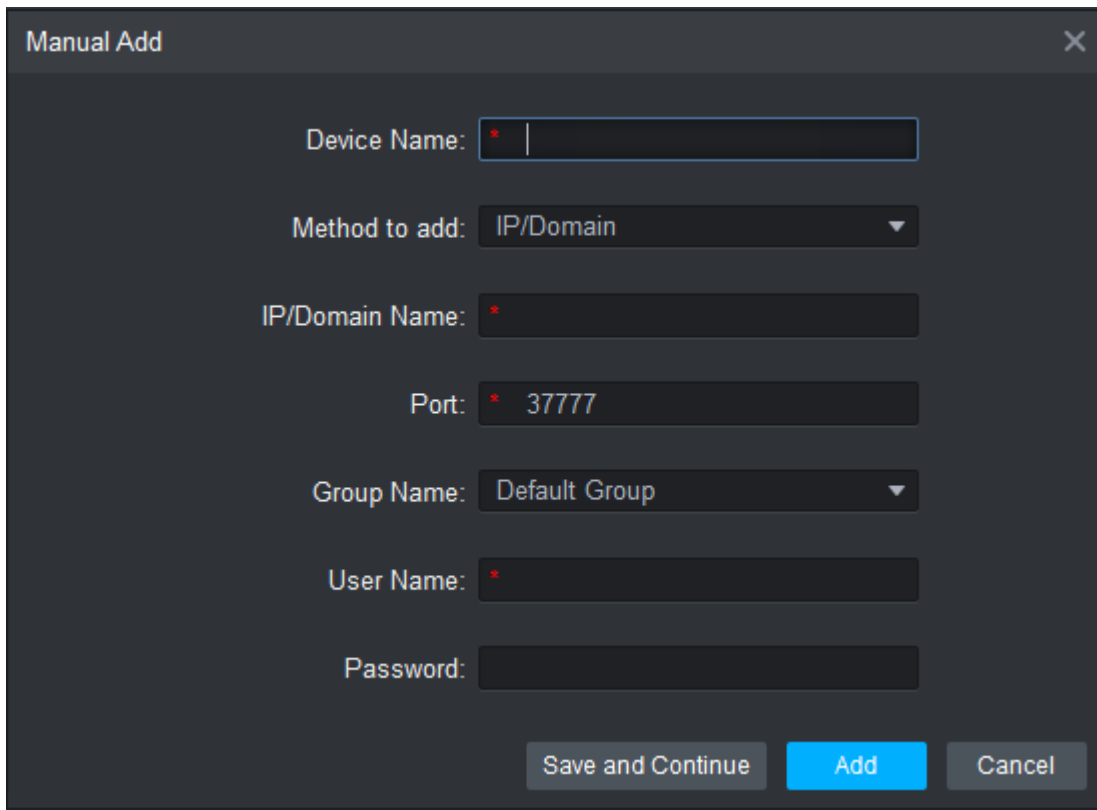
Choose manual add. **See Example Figure 2-2**

Once selected add via SmartPSS.

Enter a device name of your choice, select the method to add. P2P as method selected. Port will be 37777

Use the username and password for the admin account of recorder. **See Example Figure 2-3**

Figure 2-3



The image shows a 'Manual Add' dialog box with the following fields and controls:

- Device Name:** A text input field with a red asterisk and a vertical cursor.
- Method to add:** A dropdown menu currently showing 'IP/Domain'.
- IP/Domain Name:** A text input field with a red asterisk.
- Port:** A text input field containing '37777' with a red asterisk.
- Group Name:** A dropdown menu currently showing 'Default Group'.
- User Name:** A text input field with a red asterisk.
- Password:** A text input field.
- Buttons:** 'Save and Continue' (disabled), 'Add' (highlighted in blue), and 'Cancel' (disabled).

How To Watch Live View Of Camera's.

Once the recorder has been added to the SmartPSS application. Select the plus icon at the top left.

Under operation select live view. Once selected double click on the recorder you have added (Will be the device given name you chose)

See Example Figure 2-4 and 2-5

Figure 2-4

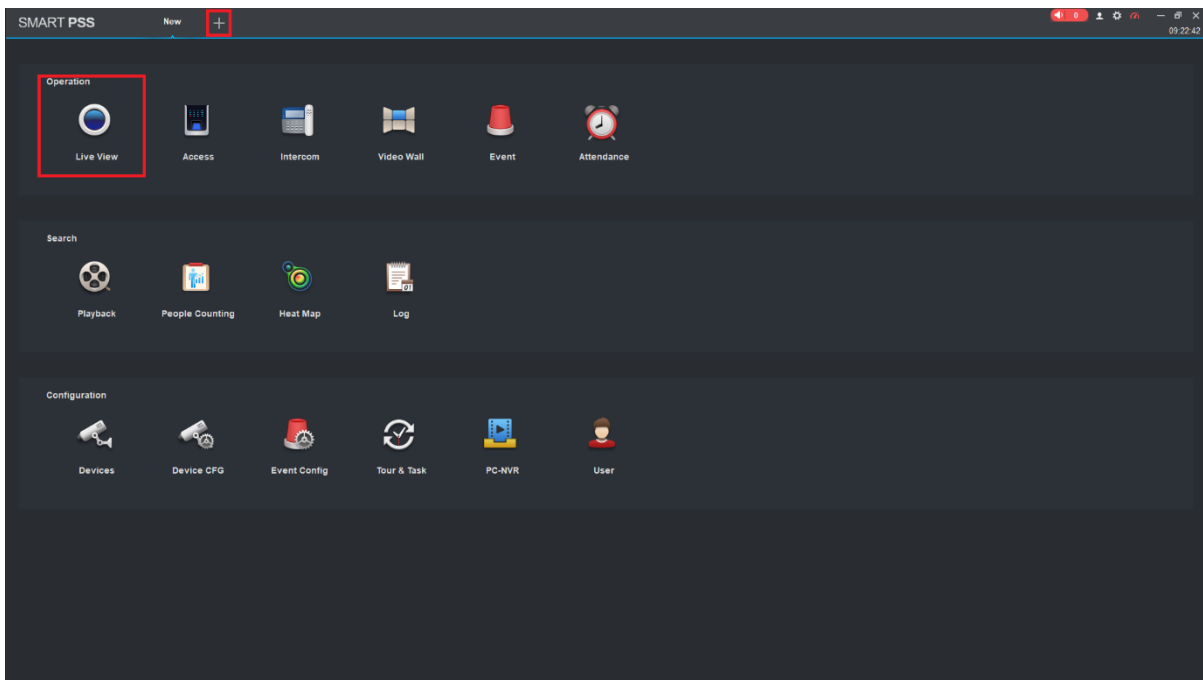
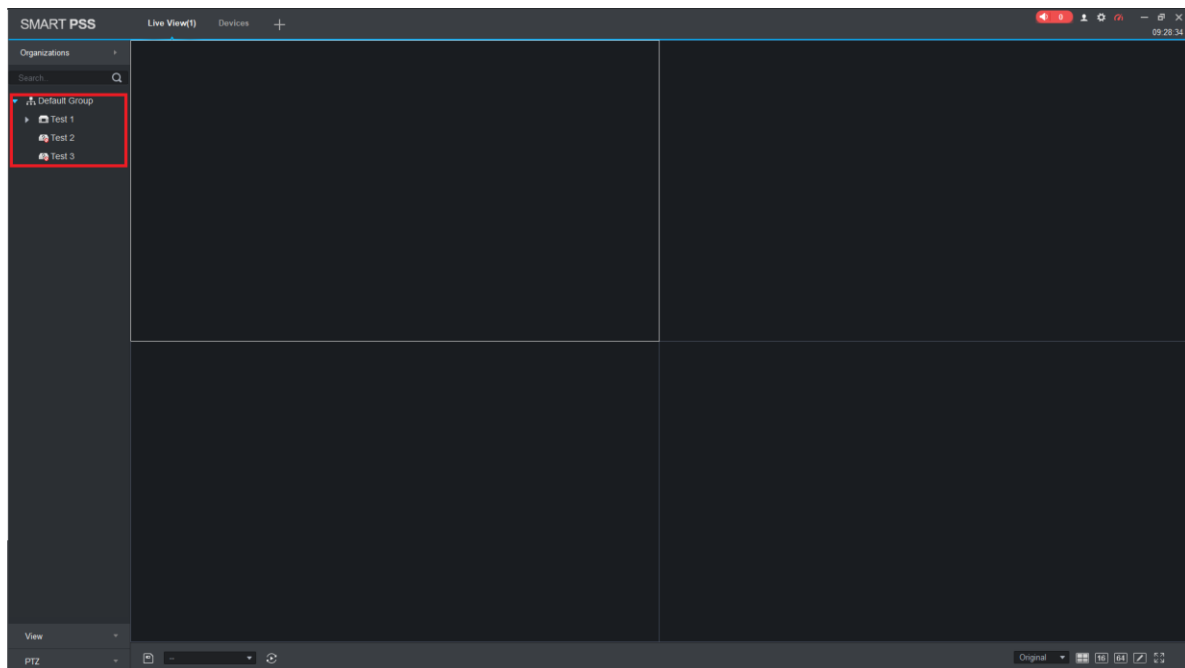


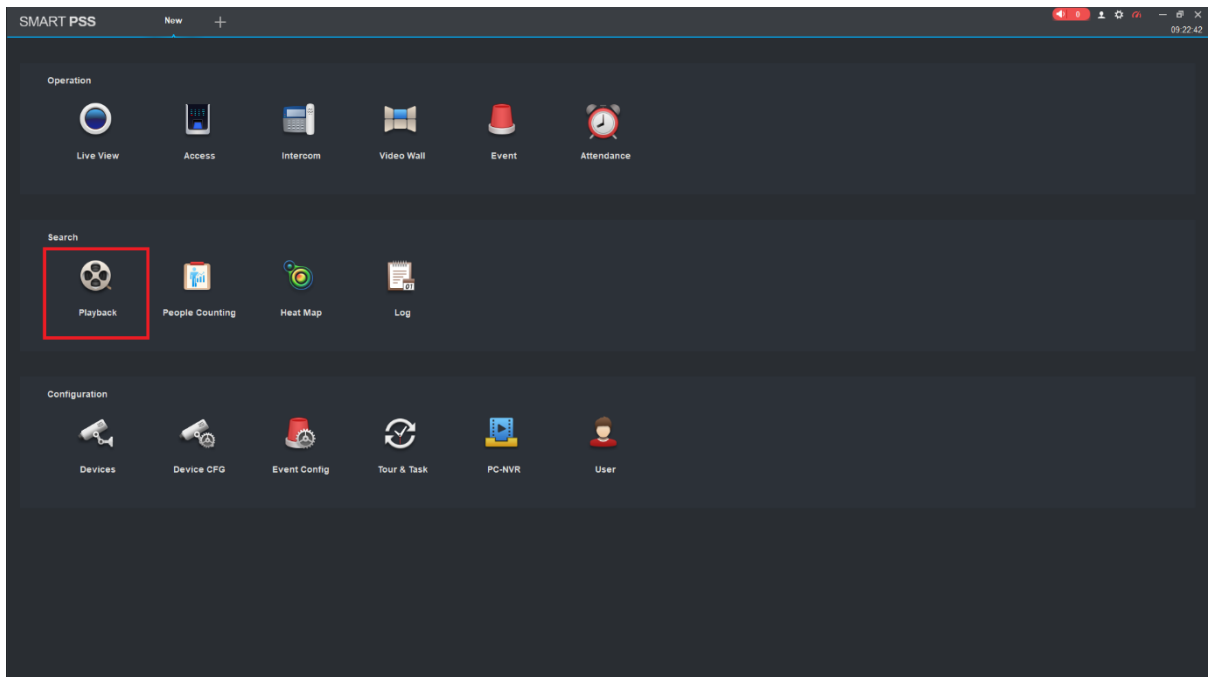
Figure 2-5



How To Watch And Backup Playback.

Under search on the main menu of SmartPSS click on playback. See Example figure 3-1

Figure 3-1

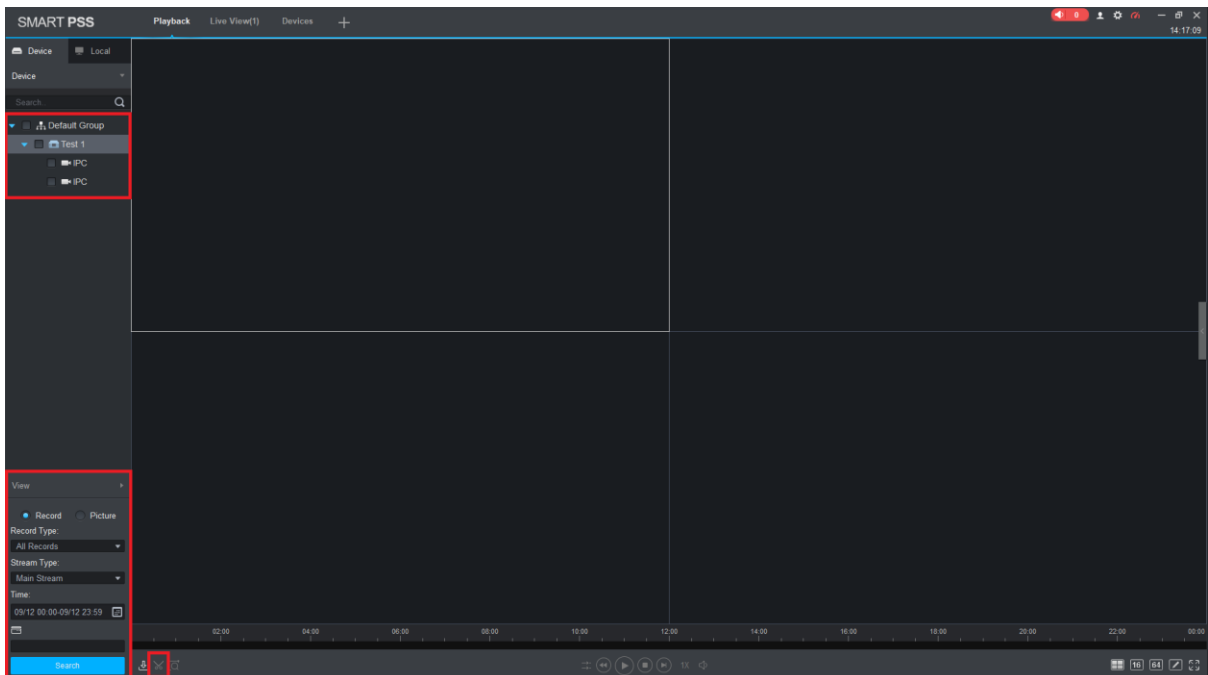


Click on playback and you will see a four-split view.

Top left-hand corner select the recorder and or camera(s).

See Example Figure 3-2

Figure 3-2



Bottom left hand corner select the record option.

Select the record type, Select the stream type, and the date and time.

Click on search, and you will have footage playing back.

If you wish to play multiple screens at one make sure to turn SYNC on.



How to backup footage.

Select the camera and or recorder. Set the date and time.

Click on search. Once clicked on search and the footage is playing back you will have a scissors icon bottom left hand corner. **See Example 3-2**

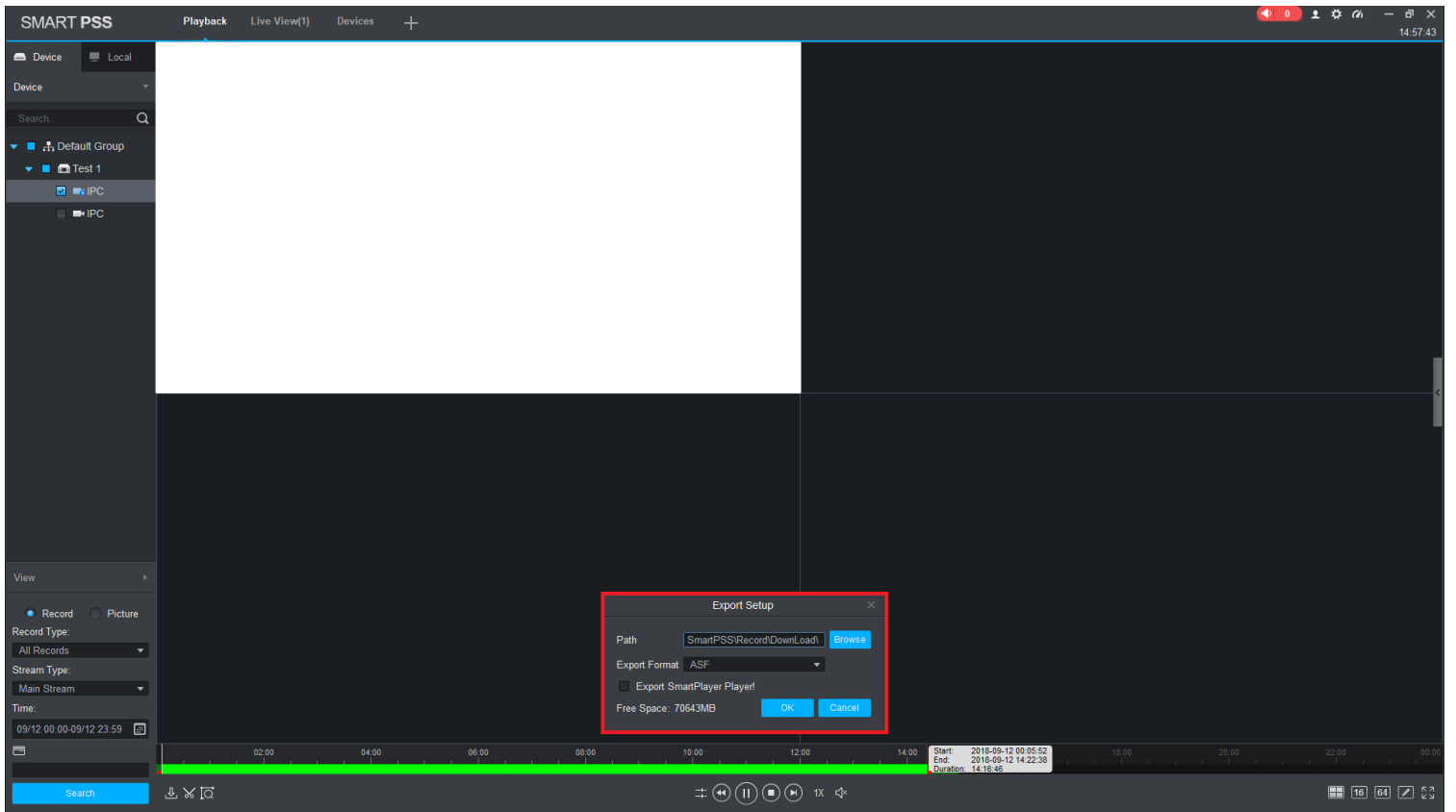
Once you have selected the time frame you want to backup.

Make sure that you start the playback. Click on the scissor's icon. This will give you a selected area to edit on the green bar of playback footage.

Then select the end time frame and click on the scissor's icon.

This will give you a prompt on selecting the video format and the file path you want to backup to. **See example Figure 3-3**

Figure 3-3



QR code remote access setup (4G)

1. Install the free app from the App Store for iOS (iDMSS Plus) or Play Store for Android (gDMSS Plus).
2. Open the iDMSS Plus/gDMSS Plus app you have installed on your device and select "Camera"
3. Select Menu, then select "Device Manager". (Fig. 3.2c)
4. Press the "Add" button and tap "OK" when prompted.
5. Select "Wired device"
6. Select "P2P" & enter a name for the camera. This name is for reference only and can be set to anything.
7. Enter the serial number of the camera into the "SN:" text box, **OR** select the image of the QR code (pictured) and use your phone to scan the QR code included with the kit. Make sure the app is permitted to access your phone's camera.
8. Enter the default username and password
9. In Live Preview, you can choose between using Main or Extra stream. (Fig. 3.2e) Main displays a higher quality stream but uses up more data and has a slower connection, while Extra consumes less data and bandwidth but has lower image quality.
10. When using Playback, ensure that Live Preview is set to Main. If set to Extra, the screen will be black. This is because the camera has been preset to only record the Main stream to the microSD card (you can change this setting).
11. Select "Start Live Preview". If the details were entered correctly, your phone should connect to your recorder and you will see the live camera display.



For more information on how to configure the camera, refer to the camera's Quick Start Guide (included).



Fig. 3.2c
Main Menu

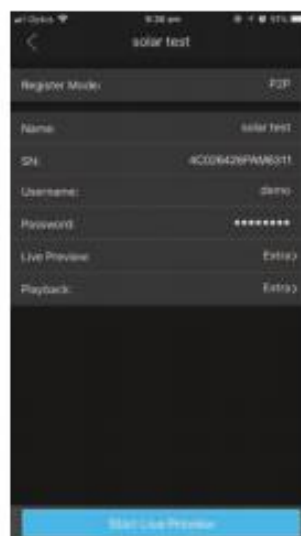


Fig. 3.2d
Camera details



Fig. 3.2e
Live Preview stream selection