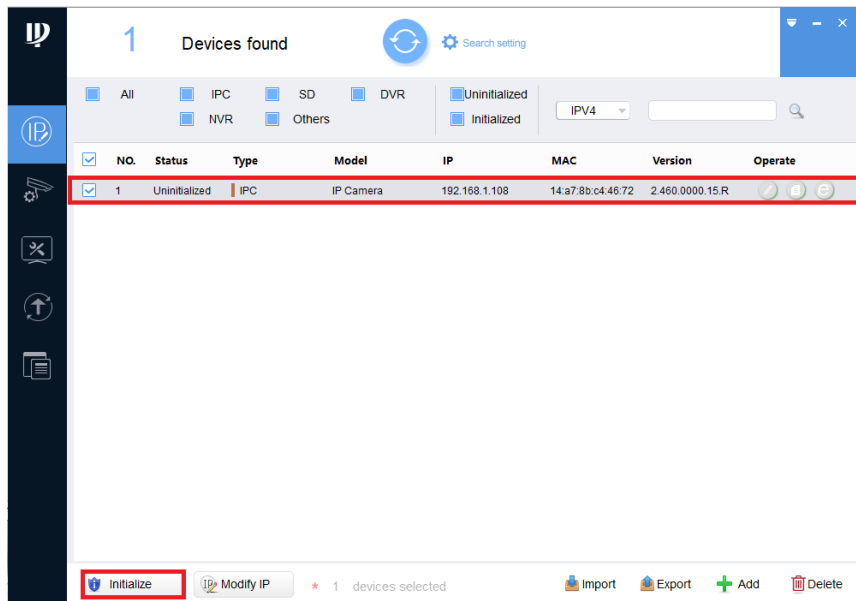


Camera initialisation

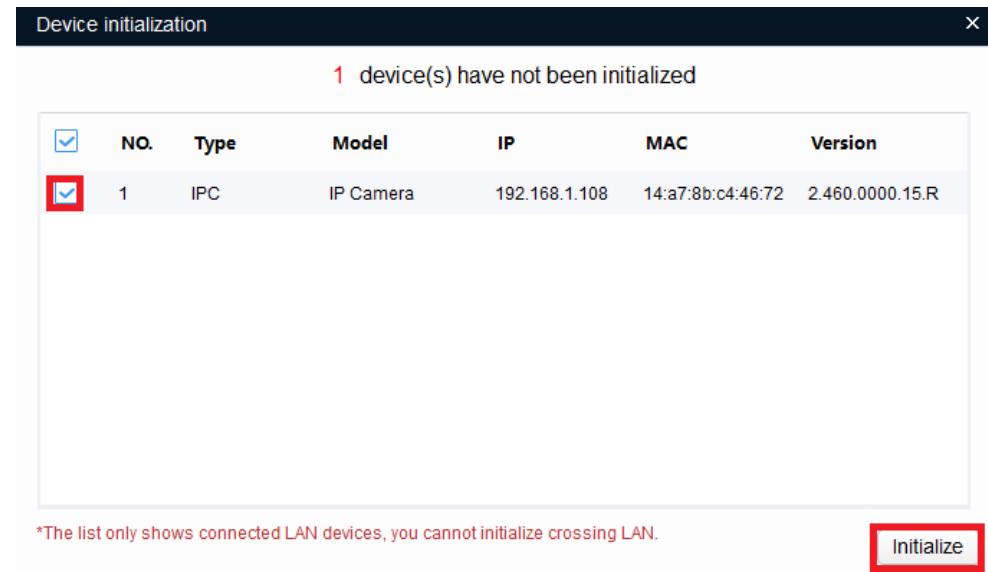
Download config tool and install the application.

<https://www.rhinoco.com.au/file/download/eMzAxMw==>

Select the uninitialized device(s) and click the initialize button.



Select all the device(s) and click initialize.



Set and confirm the password.

Device initialization ✕

1 device(s) have not been initialized

Username

New Password

Weak Medium Strong

Confirm Password

Use a password that has 8 to 32 characters, it can be a combination of letter(s), number(s) and symbol(s) with at least two kinds of them. (excluding ", ; : ; ; & ')

Email Address (for password reset)


*After you have set new password, please set password again in Search Setup.

Next

Click finish and the initialization is done.

Initialization ✕

0 device(s) have been activated!

NO.	Type	Model	IP	MAC	Version
1	 IPC	IP Camera	192.168.1.108	14:a7:8b:c4:46:72	2.460.0000.15.R

Finish

