

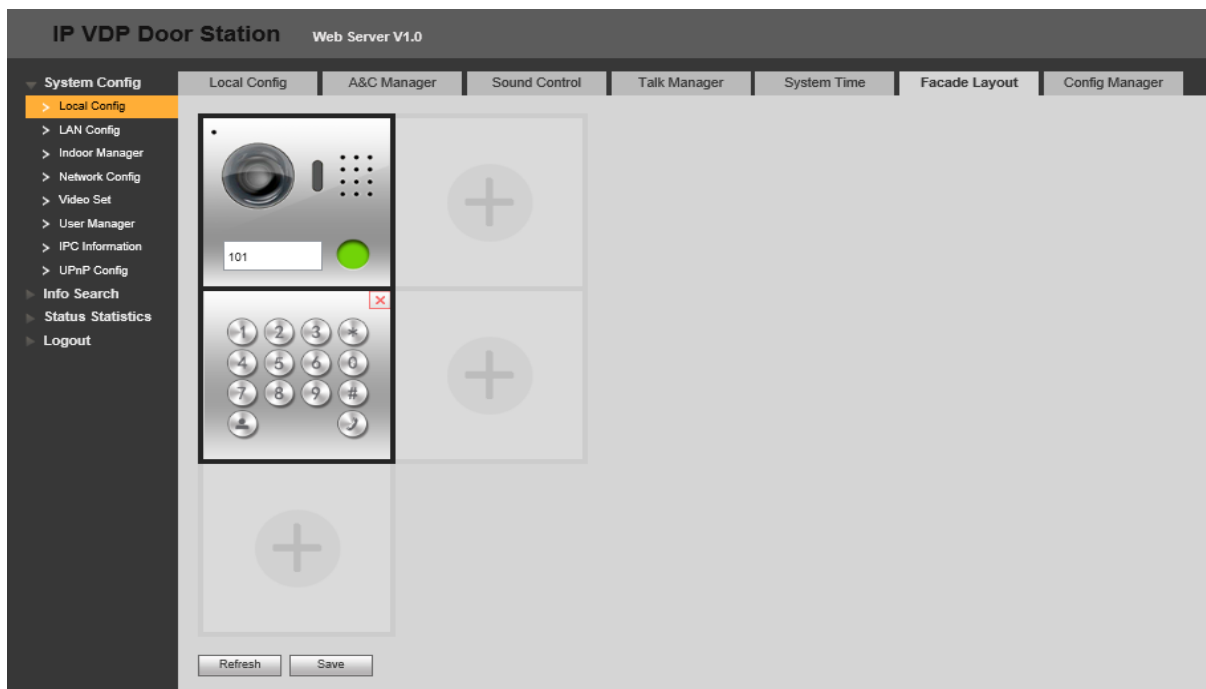
VIP RESIDENTIAL INTERCOM

KEYPAD CONFIGURATION V1.1

Adding a password will mean you need to access the web interface.

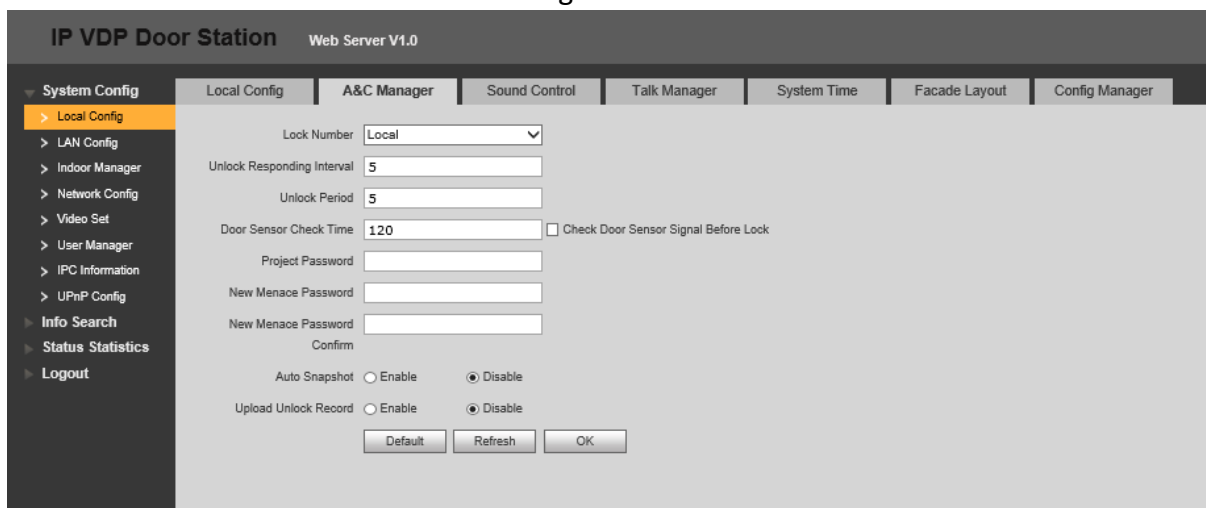
See page 4 of the [Installers Manual](#) for more info.

1. Log into the web interface.
2. Go to **System Config > Local Config > Facade Layout**, this will allow you to customise your system and add the modules you have installed, e.g keypad, card reader etc. You will need to reboot the browser after saving any changes.

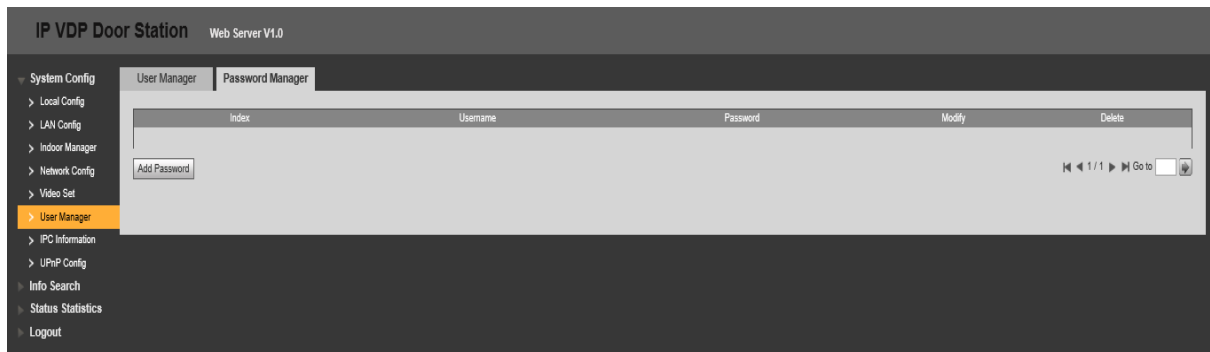


3. Select A&C Manager and input a new Menace Password. Once you enter the new password twice, select Ok and your password will now change.

It is recommended that you change the Menace password as the default code of 654321 is used and can be used to gain access to the door.



4. Go to **User Manager > Password Manager** and click on Add Password and fill out the required information.



Any passwords saved will show up here. You can also remove or modify them if they are no longer required.