



TRADE SPECIALS

Exclusive trade only specials: Available until 30th June 2019



CCTV | ALARMS | INTERCOMS | ACCESS | LED | SOLAR SYSTEMS



Over 500 trade deals inside to support your installation business



Contact us: (02) 9671 6711 • sales@rhino.com.au • www.rhino.com.au

- Industry leading **4 year warranty** offered on all professional products
- **Well known, unique & protected brands** to add value to your installs
- We **match or better competitor pricing** for directly comparable product
- Enjoy **free expert technical support** on the RhinoCo Technology range

Unbeatable IP surveillance kit specials to save you more.

- » Amazing deals on fixed & motorised lens IP surveillance kits
- » Mix & match any equivalent price dome or bullet camera
- » Add up to 10TB HDDs & camera cabling (sold separately)

Compact IP Kit Series 4.0MP | 2.8mm Fixed Lens



4CH 4.0MP Fixed Lens IP Kit

1 x 4 Channel COM Series NVR, 4 x PoE, 1 x HDD bay
1 x Pre-installed 1TB SkyHawk Surveillance HDD
4 x 4.0MP 2.8mm (101°) bullets & vandal domes

NVRKIT-C441F
(4CH, 1TB HDD)



8CH 4.0MP Fixed Lens IP Kit

1 x 8 Channel COM Series NVR, 8 x PoE, 1 x HDD bay
1 x Pre-installed 2TB SkyHawk Surveillance HDD
8 x 4.0MP 2.8mm (101°) bullets & vandal domes

NVRKIT-C842F
(8CH, 2TB HDD)



16CH 4.0MP Fixed Lens IP Kit

1 x 16 Channel COM Series NVR, 16 x PoE, 2 x HDD bays
1 x Pre-installed 4TB SkyHawk Surveillance HDD
16 x 4.0MP 2.8mm (101°) bullets & vandal domes

NVRKIT-C1644F
(16CH, 4TB HDD)

Compact IP Kit Series 4.0MP | 2.8 - 12mm Motorised Lens



4CH 4.0MP Motorised Lens IP Kit

1 x 4 Channel COM Series NVR, 4 x PoE, 1 x HDD bay
1 x Pre-installed 1TB SkyHawk Surveillance HDD
4 x 4.0MP 2.8~12mm (94~33°) bullets & domes

NVRKIT-C441M
(4CH, 1TB HDD)



8CH 4.0MP Motorised Lens IP Kit

1 x 8 Channel COM Series NVR, 8 x PoE, 1 x HDD bay
1 x Pre-installed 2TB SkyHawk Surveillance HDD
8 x 4.0MP 2.8~12mm (94~33°) bullets & domes

NVRKIT-C842M
(8CH, 2TB HDD)



16CH 4.0MP Motorised Lens IP Kit

1 x 16 Channel COM Series NVR, 16 x PoE, 2 x HDD bay
1 x Pre-installed 4TB SkyHawk Surveillance HDD
16 x 4.0MP 2.8~12mm (94~33°) bullets & domes

NVRKIT-C1644M
(16CH, 4TB HDD)

Professional IP Kit Series 2.0MP | 2.8/3.6mm Fixed Lens



4CH 2.0MP Fixed Lens IP Kit

1 x 4 Channel PRO Series NVR, 4 x PoE, 2 x HDD bays
1 x Pre-installed 1TB SkyHawk Surveillance HDD
4 x 2.0MP IVS WDR ePoE 2.8/3.6mm domes/bullets

NVRKIT-P421F
(4CH, 1TB HDD)



8CH 2.0MP Fixed Lens IP Kit

1 x 8 Channel PRO Series NVR, 8 x PoE, 2 x HDD bays
1 x Pre-installed 2TB SkyHawk Surveillance HDD
8 x 4.0MP IVS WDR ePoE 2.8/3.6mm domes/bullets

NVRKIT-P822F
(8CH, 2TB HDD)



16CH 2.0MP Fixed Lens IP Kit

1 x 16 Channel PRO Series NVR, 16 x PoE, 4 x HDD bays
1 x Pre-installed 4TB SkyHawk Surveillance HDD
16 x 4.0MP IVS WDR ePoE 2.8/3.6mm domes/bullets

NVRKIT-P1624F
(16CH, 4TB HDD)

Professional IP Kit Series 4.0MP | 2.8mm Fixed Lens



4CH 4.0MP Fixed Lens IP Dome Kit

1 x 4 Channel PRO Series NVR, 4 x PoE, 2 x HDD bays
1 x Pre-installed 1TB SkyHawk Surveillance HDD
4 x 4.0MP IVS WDR ePoE 2.8mm (104°) turret domes

NVRKIT-P441F
(4CH, 1TB HDD)



8CH 4.0MP Fixed Lens IP Dome Kit

1 x 8 Channel PRO Series NVR, 8 x PoE, 2 x HDD bays
1 x Pre-installed 2TB SkyHawk Surveillance HDD
8 x 4.0MP IVS WDR ePoE 2.8mm (104°) turret domes

NVRKIT-P842F
(8CH, 2TB HDD)



16CH 4.0MP Fixed Lens IP Dome Kit

1 x 16 Channel PRO Series NVR, 16 x PoE, 4 x HDD bays
1 x Pre-installed 4TB SkyHawk Surveillance HDD
16 x 4.0MP IVS WDR ePoE 2.8mm (104°) turret domes

NVRKIT-P1644F
(16CH, 4TB HDD)

Professional IP Kit Series 6.0MP | 2.8mm Fixed Lens



4CH 6.0MP Fixed Lens IP Kit

1 x 4 Channel PRO Series NVR, 4 x PoE, 2 x HDD bays
1 x Pre-installed 2TB SkyHawk Surveillance HDD
4 x 6.0MP IVS WDR ePoE 2.8mm (98°) bullets/domes

NVRKIT-P462F
(4CH, 2TB HDD)



8CH 6.0MP Fixed Lens IP Kit

1 x 8 Channel PRO Series NVR, 8 x PoE, 2 x HDD bays
1 x Pre-installed 4TB SkyHawk Surveillance HDD
8 x 6.0MP IVS WDR ePoE 2.8mm (98°) bullets/domes

NVRKIT-P864F
(8CH, 4TB HDD)



16CH 6.0MP Fixed Lens IP Kit

1 x 16 Channel PRO Series NVR, 16 x PoE, 4 x HDD bays
2 x Pre-installed 4TB SkyHawk Surveillance HDD
16 x 6.0MP IVS WDR ePoE 2.8mm (98°) bullets/domes

NVRKIT-P1668F
(16CH, 2 x 4TB HDD)

Professional IP Kit Series 8.0MP | 2.8mm Fixed Lens



4CH 8.0MP Fixed Lens IP Kit

1 x 4 Channel PRO Series NVR, 4 x PoE, 2 x HDD bays
1 x Pre-installed 2TB SkyHawk Surveillance HDD
4 x 8.0MP IVS WDR ePoE 2.8mm (112°) bullets/domes

NVRKIT-P482F
(4CH, 2TB HDD)



8CH 8.0MP Fixed Lens IP Kit

1 x 8 Channel PRO Series NVR, 8 x PoE, 2 x HDD bays
1 x Pre-installed 4TB SkyHawk Surveillance HDD
8 x 8.0MP IVS WDR ePoE 2.8mm (112°) bullets/domes

NVRKIT-P884F
(8CH, 4TB HDD)



16CH 8.0MP Fixed Lens IP Kit

1 x 16 Channel PRO Series NVR, 16 x PoE, 4 x HDD bays
2 x Pre-installed 4TB SkyHawk Surveillance HDD
16 x 8.0MP IVS WDR ePoE 2.8mm (112°) bullets/domes

NVRKIT-P1688F
(16CH, 2 x 4TB HDD)

Professional IP Kit Series 4.0MP | 2.7 - 13.5mm Motorised Lens



4CH 4.0MP Motorised Lens IP Kit

1 x 4 Channel PRO Series NVR, 4 x PoE, 2 x HDD bays
1 x Pre-installed 1TB SkyHawk Surveillance HDD
4 x 4.0MP IVS WDR 2.7~13.5mm (104~28°) cameras

NVRKIT-P441M
(4CH, 1TB HDD)



8CH 4.0MP Motorised Lens IP Kit

1 x 8 Channel PRO Series NVR, 8 x PoE, 2 x HDD bays
1 x Pre-installed 2TB SkyHawk Surveillance HDD
8 x 4.0MP IVS WDR 2.7~13.5mm (104~28°) cameras

NVRKIT-P842M
(8CH, 2TB HDD)



16CH 4.0MP Motorised Lens IP Kit

1 x 16 Channel PRO Series NVR, 16 x PoE, 4 x HDD bays
1 x Pre-installed 4TB SkyHawk Surveillance HDD
16 x 4.0MP IVS WDR 2.7~13.5mm (104~28°) cameras

NVRKIT-P1644M
(16CH, 4TB HDD)

Professional IP Kit Series 8.0MP | 3.7 - 11.0mm Motorised Lens



4CH 8.0MP Motorised Lens IP Kit

1 x 4 Channel PRO Series NVR, 4 x PoE, 2 x HDD bays
1 x Pre-installed 2TB SkyHawk Surveillance HDD
4 x 8.0MP IVS WDR 3.7~11.0mm (112~46°) cameras

NVRKIT-P482M
(4CH, 2TB HDD)



8CH 8.0MP Motorised Lens IP Kit

1 x 8 Channel PRO Series NVR, 8 x PoE, 2 x HDD bays
1 x Pre-installed 4TB SkyHawk Surveillance HDD
8 x 8.0MP IVS WDR 3.7~11.0mm (112~46°) cameras

NVRKIT-P884M
(8CH, 4TB HDD)



16CH 8.0MP Motorised Lens IP Kit

1 x 16 Channel PRO Series NVR, 16 x PoE, 4 x HDD bays
2 x Pre-installed 4TB SkyHawk Surveillance HDD
16 x 8.0MP IVS WDR 3.7~11.0mm (112~46°) cameras

NVRKIT-P1688M
(16CH, 2 x 4TB HDD)

Incredible deals on ready for install 4K surveillance kits.

- » The best in fixed & motorised lens HDCVI surveillance kits
- » Mix & match any equivalent price dome or bullet camera
- » Includes 20m video/power looms & 12VDC power supplies

4K HDCVI Kit Series 8.0MP | 2.8mm Fixed Lens



4CH 8.0MP Fixed Lens HDCVI Kit

1 x 8 Channel COM Series HDCVI DVR, 1 x HDD bay
1 x Pre-installed 2TB SkyHawk Surveillance HDD
4 x 8.0MP 2.8mm (111°) full metal bullets & domes

CVRKIT-C482F
(8CH DVR, 2TB HDD)



8CH 8.0MP Fixed Lens HDCVI Kit

1 x 8 Channel COM Series HDCVI DVR, 1 x HDD bay
1 x Pre-installed 4TB SkyHawk Surveillance HDD
8 x 8.0MP 2.8mm (111°) full metal bullets & domes

CVRKIT-C884F
(8CH, 4TB HDD)



16CH 8.0MP Fixed Lens HDCVI Kit

1 x 16 Channel COM Series HDCVI DVR, 1 x HDD bay
1 x Pre-installed 6TB SkyHawk Surveillance HDD
16 x 8.0MP 2.8mm (111°) full metal bullets & domes

CVRKIT-C1686F
(16CH, 6TB HDD)

4K HDCVI Kit Series 8.0MP | 3.7 - 11.0mm Motorised Lens



4CH 8.0MP Motorised Lens HDCVI Kit

1 x 8 Channel COM Series HDCVI DVR, 1 x HDD bay
1 x Pre-installed 2TB SkyHawk Surveillance HDD
4 x 8.0MP 3.7~11mm (112~46°), WDR cameras

CVRKIT-C482M
(8CH DVR, 2TB HDD)



8CH 8.0MP Motorised Lens HDCVI Kit

1 x 8 Channel COM Series HDCVI DVR, 1 x HDD bay
1 x Pre-installed 4TB SkyHawk Surveillance HDD
8 x 8.0MP 3.7~11mm (112~46°), WDR cameras

CVRKIT-C884M
(8CH, 4TB HDD)



16CH 8.0MP Motorised Lens HDCVI Kit

1 x 16 Channel COM Series HDCVI DVR, 1 x HDD bay
1 x Pre-installed 6TB SkyHawk Surveillance HDD
16 x 8.0MP 3.7~11mm (112~46°), WDR cameras

CVRKIT-C1686M
(16CH, 6TB HDD)

Ultra HD recording solutions for a wide variety of applications.

» Three distinct ranges to help deliver more value to your installs

Compact NVR Series Up to 16 Channels | Up to 2 x HDD Bays



Compact 4 Channel PoE NVR

Record 8.0MP, up to 80Mbps, 4 port PoE, 1 x HDD up to 10TB, 1 x HDMI/VGA, H.265, smart fan, QR code remote config.

NVR4COM2
(4CH, 4 x PoE)



Compact 8 Channel PoE NVR

Record 8.0MP, up to 80Mbps, 8 port PoE, 1 x HDD up to 10TB, 1 x HDMI/VGA, H.265, smart fan, QR code remote config.

NVR8COM2
(8CH, 8 x PoE)



Compact 16 Channel PoE NVR

Record 8.0MP, up to 200Mbps, 16 port PoE, 2 x HDD up to 10TB each, 1 x HDMI/VGA, H.265, smart fan, QR code remote config.

NVR16COM2
(16CH, 16 x PoE)

Professional NVR Series Up to 32 Channels | Up to 4 x HDD Bays



Professional 4 Channel PoE NVR

Record 8.0MP/4K, up to 200Mbps, 4 port PoE, H.265+, 2 x HDD up to 10TB each, 1 x HDMI, 1 x VGA, 4/2 alarm I/O, QR code remote config.

NVR4PRO3
(4CH, 4 x PoE)



Professional 8 Channel PoE NVR

Record 12.0MP, up to 320Mbps, 8 port PoE (8 x ePoE), H.265+, 2 x HDD up to 10TB each, 1 x HDMI, 1 x VGA, 4/2 alarm I/O, QR code config.

NVR8PRO7
(8CH, 8 x PoE)



Professional 16 Channel PoE NVR

Record 12.0MP, up to 320Mbps, 16 port PoE (8 x ePoE), H.265+, 4 x HDD up to 10TB each, 2 x HDMI, 1 x VGA, 16/6 alarm I/O, QR code config.

NVR16PRO7
(16CH, 16 x PoE)



Professional 24 Channel PoE NVR

Record 12.0MP, up to 320Mbps, 24 port PoE, H.265+, 4 x HDD up to 10TB each, 2 x HDMI, 1 x VGA, 16/6 alarm I/O, QR code config.

NVR24PRO6
(24CH, 24 x PoE)



Professional 32 Channel PoE NVR

Record 12.0MP, up to 320Mbps, 16 port PoE (8 x ePoE), H.265+, 4 x HDD up to 10TB each, 2 x HDMI, 1 x VGA, 16/6 alarm I/O, QR code config.

NVR32PRO16P3
(32CH, 16 x PoE)



Professional 16/32Ch Non-PoE NVR

Record 12.0MP, up to 320Mbps, 16/32 channels, H.265, QR code, Alarm I/O, HDMI/VGA, eSATA, RS232/485, 1 x RJ45 (16CH), 2 x RJ45 (32CH)

NVR16PRO6NP (16CH, 2 x HDD)
NVR32PRONP2 (32CH, 4 x HDD)

Ultimate NVR Series Up to 64 Channels | Up to 16 x HDD Bays



Ultimate 32 Channel NVR

Record 12.0MP, up to 384Mbps, Intel® dual Core™ processors, 2 x RJ45 1000M ports, H.265+, 8 x HDD up to 10TB each, 2 x HDMI, 1 x VGA, 16/8 alarm I/O, multi-display support, RAID & hotswap HDD modes

NVR32ULTNPV2
(32CH, No PoE)



Ultimate 64 Channel NVR

Record 12.0MP, up to 384Mbps, Intel® dual Core™ processors, 2 x RJ45 1000M ports, H.265+, 8 x HDD up to 10TB each, 2 x HDMI, 1 x VGA, 16/8 alarm I/O, multi-display support, RAID & hotswap HDD modes

NVR64ULT8S
(64CH, No PoE)



Ultimate 64 Channel NVR

Record 12.0MP, up to 384Mbps, Intel® quad Core™ processors, 4 x RJ45 1000M ports, 2 x fibre, H.265, 16 x HDD up to 10TB each, 2 x HDMI, 1 x VGA, 16/8 alarm I/O, multi-display support, RAID & hotswap HDD modes, front panel LCD display

NVR64ULTNPV2
(64CH, No PoE)



Maximise your install value with Watchguard IP surveillance.

» Watchguard™ Compact Series fixed & motorised lens IP cameras

Compact IP Camera Series Up to 4.0MP | Fixed & Motorised Lens



4.0MP Fixed Lens IP Cameras

Available in compact mini bullet & IK10 vandal dome.

Stream 4.0MP at 20fps, 2.8mm wide angle lens (101°), H.265+, digital WDR, 30m infrared, motion detection, full metal housing, IP67 weather rated, IK10 vandal rated (dome), PoE/12VDC

VSIPC-4BIRS
(4.0MP, Bullet)

VSIPC-4DIRD
(4.0MP, IK10 Dome)



4.0MP Motorised Lens IP Cameras

Available in bullet, IK10 vandal dome and turret dome models.

Stream 4.0MP at 20fps, 2.8 ~ 12mm motorised lens (94 ~ 33°), H.265+, digital WDR, up to 60m infrared, motion detection, full metal housing, IP67 weather rated, IK10 vandal rated (dome), PoE/12VDC

VSIPC-4BIRMG
(4.0MP, Bullet, 60m IR)

VSIPC-4DIRMD
(4.0MP, IK10, 30m IR)

VSIPC-4DIRMG
(4.0MP, Turret, 50m IR)

Professional IP solutions to deliver you professional results.

» New Pro Series fixed & motorised lens IP surveillance cameras

Pro IP Camera Series Up to 8.0MP | Video Analytics | Fixed & Motorised Lens



Pro 2.0MP Fixed IP Turret

2.0MP@50fps, 2.8mm (104°), 3.6mm (87°), 50m IR, IVS incl. face detect, true WDR, built-in mic, microSD, ePoE, IP67

VSIPE2MPVDMINIIRCB
(2.8/3.6, 2.0MP)



Pro 4.0MP Fixed IP Turret

4.0MP@25fps, 2.8mm (104°), 3.6mm (87°), 50m IR, IVS incl. face detect, true WDR, built-in mic, microSD, ePoE, IP67

VSIPE4MPVDMINIIRCB
(2.8/3.6, 4.0MP)



Pro 6.0MP Fixed IP Turret

6.0MP@20fps, 2.8mm (98°), 3.6mm (69°), 50m IR, IVS incl. face detect, true WDR, built-in mic, microSD, ePoE, IP67

VSIPE6MPVDMINIIRC
(2.8/3.6, 6.0MP)



Pro 8.0MP Fixed IP Turret

8.0MP@15fps, 2.8mm (112°), 50m IR, IVS incl. face detect, true WDR, built-in mic, microSD, ePoE, IP67

VSIPE8MPVDMINIIRC
(2.8, 8.0MP)



Pro 4.0MP Fixed IP Wedge

4.0MP@25fps, 2.8mm (104°), 3.6mm (87°), 6.0mm (57°), 20m IR, IVS, true WDR, microSD, built-in mic, IP67/IK10

VSI4MPVDIRFV2
(2.8/3.6/6.0, 4.0MP)



Pro 2.0MP Fixed IK10 IP Bullet

2.0MP@50fps, 3.6mm lens (87°), 60m IR, IVS, true WDR, microSD, ePoE, alarm I/O, audio I/O, IP67/IK10

VSIPE2MPFBDINIIR
(3.6, 2.0MP)



Pro 6.0MP Fixed IP Mini Bullet

6.0MP@20fps, 2.8mm (98°) lens, 40m IR, IVS incl. face detect, true WDR (120dB), microSD, ePoE, IP67

VSIPE6MPFBDINIIR2.8
(2.8, 6.0MP)



Pro 8.0MP Fixed IP Mini Bullet

8.0MP@15fps, 2.8mm (112°) lens, 40m IR, IVS incl. face detect, true WDR (120dB), microSD, ePoE, IP67

VSIPE8MPFBDINIIR2.8
(2.8, 8.0MP)



Pro 4.0MP Motorised IP Bullet

4.0MP@20fps, 2.7~13.5mm motorised lens (104~28°), fixed iris, 60m IR, true WDR (120dB), IP67

VSI4MPFBIRMD
(8.0MP)



Pro 8.0MP Motorised IP Bullet

8.0MP@25fps, 3.7~11mm motorised lens (112~46°), fixed iris, 60m IR, true WDR (120dB), IP67, tripwire/intrusion

VSI8MPFBIRMD
(8.0MP)



Pro 4.0MP Motorised IP Dome

4.0MP@20fps, 2.7~13.5mm motorised lens (104~28°), fixed iris, 30m IR (50m turret), true WDR, IP67 (IK10 model)

VSI4MPVDIRMD (IK10)
VSI4MPVDIRME (Turret)



Pro 8.0MP Motorised IP Dome

8.0MP@25fps, 3.7~11mm motorised lens (112~46°), fixed iris, 30m IR, true WDR, IK10, IP67, tripwire/intrusion

VSI8MPVDIRMD
(8.0MP)

Preserve colour details in challenging lighting.



2.0MP 24/7 Colour Fixed Lens IP Cameras

With a large sensor, wide aperture & no infrared, 24/7 Colour cameras are designed for capturing colour detail in incredibly low light conditions.

Large 1/2.8" sensor, 2.0MP@25fps, 3.6mm (87°) lens at wide f/1.0 aperture, incredible 0.001lx min. illumination, true WDR, IVS, IP67, IK10 rated (dome)



VSIP2MPFBFC
(3.6, 2.0MP)

VSIP2MPVDFC
(3.6, 2.0MP)



The best camera functionality and image performance.

» Analytics, image controls & camera features for the best results

Ultimate IP Camera Series Up to 8.0MP | Video Analytics | Motorised Lens / Auto Iris



Ultimate 6.0MP IP Dome

6.0MP@20fps, 2.7~13.5mm (91~27°), DC auto iris, 50m IR, IVS, true WDR, microSD, built-in mic, ePoE, IP67

VSIP6MPVDIRMG
(6.0MP)



Ultimate 8.0MP IP Dome

8.0MP@20fps, 2.7~12mm (102~39°), DC auto iris, 50m IR, IVS, true WDR, microSD, built-in mic, ePoE, IP67

VSIP8MPVDIRMG
(8.0MP)

Alarm, audio, heater, zoom, ePoE & more.



Ultimate Series 8.0MP Motorised IP Cameras

8.0MP@15fps, 2.7~12mm motorised lens (110°~40°), 50m IR (100m zoom bullet), H.265+, true WDR, IP67, IK10, ePoE, audio, alarm, microSD.

IVS features with defogging, people counting, heat mapping, EIS & more.

In standard lens, long distance lens (38°~14°) & built-in heater models.

Standard 2.7~12mm lens

VSIP8MPFBIRM
VSIP8MPVDIRM

Long distance 7~35mm lens

VSIP8MPFBIRM-Z
VSIP8MPVDIRM-Z

2.7~12mm lens + built-in heater

VSIP8MPFBIRMH
VSIP8MPVDIRMH



Ultimate Low Light IP Cameras

2.0MP@50fps, 4.1~16.4mm (104 ~ 33°), 50m IR, true WDR, 0.002lx, IP67, IK10 (dome), IVS, audio, alarm, heater

VSIP2MPVDIRLV3
VSIP2MPFBIRLV3



Ultimate 12.0MP IP Cameras

12.0MP@15fps, 4.1~16.4mm (106 ~ 32°), 50m IR, true WDR, IP67, IK10 (dome), IVS + heatmap, audio, alarm

VSIP12MPVDIRMV2
VSIP12MPFBIRMV2

Build impressive IP installs with our specialty CCTV range.

» Make an impact with PTZ, fisheye, pinhole & panoramic cameras

Pro & Ultimate IP PTZ Series Up to 8.0MP | Auto-tracking | Endless Panning



Pro 2.0MP 25x Zoom IP PTZ
2.0MP@50fps, 4.8 ~ 120mm (59~2.4°), 150m IR, IVS, true WDR, IP67, audio/ alarm I/O, auto-track, 360° pan, PoE+

VSIP2MPPTZIRV2
(25x zoom, 2.0MP)



Pro 4.0MP 30x Zoom IP PTZ
4.0MP@25fps, 4.5~135mm (60~2.2°), 100m IR, IVS, true WDR, IP67, audio/ alarm I/O, auto-track, 360° pan, PoE+

VSIP4MPPTZIR
(30x zoom, 4.0MP)



Pro 2.0MP IP Positioning PTZ
2.0MP@50fps, 4.8 ~ 120mm (59~2.4°), 150m IR, IVS, true WDR, IP67, audio/ alarm I/O, auto-track, 180° tilt, PoE+

VSIP2MPPTZIRW (25x)
VSIBKT8730W (mount \$37)



Pro 4.0MP Compact IP PTZ
4.0MP@25fps, 2.7~11mm motorised lens (112° ~ 30°) 4x zoom, 355° pan, 0~90° tilt, IP67, IK10

VSIP4MPPTZMINI
(4x zoom, 4.0MP)

Cover entire scenes with a single camera.



Panoramic Series IP Cameras

Capture entire scenes with a single camera, saving time on your installations, resulting in an impressive panoramic image.

6.0MP & 8.0MP@25fps, arrays of image sensors to produce 180° field of view, 30m panoramic infrared, true WDR, low light 0.007lx, IVS incl. heatmap, IP67, IK10, 24VAC or PoE+ powered

*Stitched images produced single channel view; cannot be split across multiple views

VSIP6MPPA
(6.0MP Bullet)

VSIP8MPPAV2
(8.0MP Bullet)

VSIP8MPPADV2
(8.0MP Dome)



Pro 2.0MP Surface IP PTZ
2.0MP@25fps, 5.3~64mm motorised lens (59° ~ 5°), endless 360° pan, 0~90° tilt, microSD, IP66, IK10

VSIP2MPPTZV3
(12 x zoom, 2.0MP)



Pro 2.0MP Recessed IP PTZ
2.0MP@50fps, 4.8~120mm motorised lens (59° ~ 2.4°), endless 360° pan, 0~90° tilt, alarm, audio, microSD, IK10

VSIP2MPPTZCV3
(25x zoom, 2.0MP)



Ultimate 8.0MP Laser IP PTZ
8.0MP@25fps, 6 ~ 180mm (61~2.1°), 500m laser IR, true WDR, IVS, 360° pan, alarm, audio, microSD, IP67, wiper

VSIP8MPPTZIRL
(30x zoom, 8.0MP)



Ultimate 2.0MP Zoom IP PTZ
2.0MP@50fps, 5.7 ~ 275mm (64~1.5°), 450m IR, true WDR, IVS, 360° pan, alarm, audio, microSD, IP67, wiper

VSIP2MPPTZIRK
(48x zoom, 2.0MP)

5.0
MEGAPIXEL



5.0MP Fisheye IP Dome

5.0MP@25fps 1.4mm circular fisheye lens (360°), 0.02lx, IVS incl. heatmap, electronic day/night, IP67/IK08

VSIP5MPFEV2
(5.0MP)

12.0
MEGAPIXEL



12.0MP Fisheye IP Dome

12.0MP@25fps 1.98mm circular fisheye lens (360°), 10m 360° infrared, IVS incl heatmap, alarm, audio, IP67/IK10

VSIP12MPFEIRV2
(12.0MP)

4.0
MEGAPIXEL



4.0MP IP Pinhole Camera

4.0MP@25fps, 2.8mm (83°), true WDR, IVS, audio/alarm I/O, microSD, 0.02lx, digital day/night, lens Ø31 x 49mm

VSIP4MPPHM (module)
VSIP4MPPHC (lens)

HD
720P



1.0MP IP Pinhole Camera

1.0MP@25fps, 3.6mm (77°), 0.01lx, electronic day/night, true WDR, compact shape 30x30x22mm

VSPINHOLE3.6
(1.0MP)

Pinpoint crucial vehicle identification details.



2.0MP Edge Enhancement / ANPR IP Bullet Cameras

Edge enhancement for number plate video capture; optional ANPR model (Auto Number Plate Recognition) for additional features, such as gate integration, number plate whitelist/blacklist, reporting etc.

2.0MP@25fps, 2.7~12mm (101°~36°) motorised lens with auto iris, 10m IR, true WDR (140dB), highlight compensation, support shutter speed windowing, microSD, IP67

VSIP2MPFBIRMTV2
(Edge Enhance)

VSIP2MPFBIRMTN
(Edge enh. + ANPR)

The ultimate in motion detection accuracy.



2.0MP Hybrid Visible/Thermal IP Bullet Camera

This camera combines visible light and thermal images for a unique surveillance experience. Configure IVS with high accuracy thermal images for the best in intruder detection and premises perimeter protection.

Combined thermal & visible light cameras, 2.0MP@25fps, 4mm visible (75°), 1mm thermal (56°), 35m IR, true WDR, 0.005lx, IVS, fire detection and alarm, thermal image overlay, IP67

VSIP2C2MPFB
(2.0MP)

WiFi Series 3.0MP | Up to 4 Channels | Up to 2 x HDD Bays



WiFi 3.0MP Fixed Mini Bullet

3.0MP@20fps, 2.8mm (100°), 30m IR, digital WDR, 0.01lx, microSD, IP67 rated, full metal body, 12VDC

VSIPW-3FBIR
(3.0MP)



WiFi 3.0MP Fixed Mini Dome

3.0MP@20fps, 2.8mm (100°), 30m IR, digital WDR, 0.01lx, microSD, IP67 & IK10 rated, metal/polycarb body, 12VDC

VSIPW-3VDIR
(3.0MP)



WiFi 4 Channel Dual Band NVR

Record up to 5.0MP (80Mbps), 2.4GHz & 5GHz, 1 x HDD up to 10TB each, H.264, 50m WiFi range (line of sight)

NVR4WF
(4CH)



4CH 3.0MP Fixed IP WiFi Kit

3.0MP@20fps with 2 x WiFi bullets & domes, pre-installed 1TB HDD, (incl. 12VDC2A camera power PSU)

NVR4WFPACK
(3.0MP, 4CH Kit)

Deliver excellent results in new & upgrade installations.

» Wide range of coaxial surveillance solutions from 720p to 4K

Entry HDCVI Series Up to 1.0MP | Backwards & Cross Compatibility



Entry 8 Channel DVR

Record 720p@15fps, add 2CH IP, 1 x HDD up to 10TB, H.265, HDMI, VGA, supports CVI/AHD/TVI/composite

CVR8ENT
(8CH, 720p)



Entry 16 Channel DVR

Record 720p@15fps, add 2CH IP, 1 x HDD up to 10TB, H.265, HDMI, VGA, supports CVI/AHD/TVI/composite

CVR16ENT
(16CH, 720p)



Entry 1.0MP HDCVI Bullet

1.0MP@25fps, 3.6mm (88°), 20m IR, full metal, IP67 rated body, HDCVI video output, 12VDC

VSCV11MPFBIRV2
(720p)



Entry 1.0MP HDCVI Dome

1.0MP@25fps, 3.6mm (88°), 50m IR, full metal, IP67 rated body, HDCVI video output, 12VDC

VSCV11MPDIRV4
(720p)

Compact & Pro HDCVI Series Up to 8.0MP | Backwards & Cross Compatibility



Compact 8 Channel DVR

Record 8.0MP@7fps, add 2CH IP, 1 x HDD up to 10TB, H.265, HDMI, VGA, supports CVI/AHD/TVI/composite

CVR8COM
(8CH, 8.0MP)



Compact 16 Channel DVR

Record 8.0MP@7fps, add 2CH IP, 1 x HDD up to 10TB, H.265, HDMI, VGA, supports CVI/AHD/TVI/composite

CVR16COM
(16CH, 8.0MP)



Compact 2.0MP HDCVI Bullet

2.0MP@25fps, 3.6mm (83°), 20m IR, HD/SD switchable video out, full metal, IP67, 12VDC

VSCV12MPFBIRV2
(2.0MP)



Compact 2.0MP HDCVI Dome

2.0MP@25fps, 3.6mm (90°), 50m IR, HD/SD switchable video out, full metal, IP67, 12VDC

VSCV12MPDIRV4
(2.0MP)



Professional 4 Channel DVR

Record 4.0MP@15fps, add 2CH IP up to 5.0MP, H.264, 2 x HDD up to 10TB each, HDMI, VGA, supports CVI/AHD/TVI/composite

CVR4PRO2
(4CH, 4.0MP)



Professional 8 Channel DVR

Record 8.0MP@7fps, add 4CH IP up to 8.0MP, H.265, 2 x HDD up to 10TB each, HDMI, VGA, supports CVI/AHD/TVI/composite

CVR8PRO3
(8CH, 8.0MP)



Professional 16 Channel DVR

Record 8.0MP@7fps, add 8CH IP up to 8.0MP, H.265, 2 x HDD up to 10TB each, HDMI, VGA, supports CVI/AHD/TVI/composite

CVR16PRO3
(16CH, 8.0MP)



Professional 32 Channel DVR

Record 2.0MP@15fps, supports 32CH IP up to 8.0MP, H.265, 8 x HDD up to 10TB each, 2 x HDMI, VGA, supports CVI/AHD/TVI/composite

CVR32PRO3
(32CH, 2.0MP)

Pro HDCVI Series Up to 8.0MP | Fixed Lens | PIR Camera | 24/7 Colour



SECURVIEW
VICTORY SERIES

Pro 2.0MP HDCVI Bullet

2.0MP@25fps, 3.6mm (90°), 40m IR, true WDR, HDCVI/SD dual video out, IP67, 12VDC

VSCVI2MPFBIRV4
(3.6, 2.0MP)



SECURVIEW
VICTORY SERIES

Pro 4.0MP HDCVI Bullet

4.0MP@25fps, 3.6mm (79°), 40m IR, true WDR, HDCVI/SD dual video out, IP67, 12VDC

VSCVI4MPFBIR
(3.6, 4.0MP)



SECURVIEW
VICTORY SERIES

Pro 5.0MP HDCVI Bullet

5.0MP@20fps, 2.8mm (98°), 40m IR, 0.005lx, true WDR, built-in mic, CVI/AHD/TVI/SD DIP switch, IP67, 12VDC

VSCVI-5BIR2.8E
(2.8, 5.0MP)



SECURVIEW
VICTORY SERIES

Pro 8.0MP HDCVI Bullet

8.0MP@15fps, 2.8mm (111°), 40m IR, 0.005lx, true WDR, built-in mic, CVI/AHD/TVI/SD DIP switch, IP67, 12VDC

VSCVI-8BIRG
(2.8, 8.0MP)



SECURVIEW
VICTORY SERIES

Pro 2.0MP HDCVI IK10 Dome

2.0MP@25fps, 3.6mm (87°), 30m IR, true WDR, HDCVI/SD switchable video out, 0.005lx, IP67, IK10, 12VDC

VSCVI2MPVDIRV3
(3.6, 2.0MP)



SECURVIEW
VICTORY SERIES

Pro 4.0MP HDCVI IK10 Dome

4.0MP@25fps, 2.8mm (100°), 30m IR, true WDR, HDCVI/SD dual video out, IP67, IK10, 12VDC

VSCVI4MPVDIR2.8
(2.8, 4.0MP)



SECURVIEW
VICTORY SERIES

Pro 4.0MP HDCVI Dome

4.0MP@25fps, 3.6mm (79°), 50m IR, true WDR, HDCVI/SD dual video out, IP67, IK10, 12VDC

VSCVI4MPDIR
(3.6, 4.0MP)



SECURVIEW
VICTORY SERIES

Pro 5.0MP HDCVI Dome

5.0MP@20fps, 2.8mm (98°), 50m IR, 0.005lx, true WDR, built-in mic, CVI/AHD/TVI/SD DIP switch, IP67, 12VDC

VSCVI-5DIR2.8G
(2.8, 5.0MP)



SECURVIEW
VICTORY SERIES

Pro 8.0MP HDCVI Dome

8.0MP@15fps, 2.8mm (111°), 40m IR, 0.005lx, true WDR, built-in mic, CVI/AHD/TVI/SD DIP switch, IP67, 12VDC

VSCVI-8DIRG
(2.8, 8.0MP)



SECURVIEW
VICTORY SERIES

Pro 8.0MP HDCVI PIR Bullet

8.0MP@15fps, 2.8mm (111°), 20m IR, 0.005lx, true WDR, built-in mic, PIR motion, DIP switchable, IP67, 12VDC

VSCVI-8BIRP
(2.8, PIR, 8.0MP)

24/7 Colour in HDCVI.

SECURVIEW
VICTORY SERIES

24/7 Colour 2.0MP HDCVI Dome

2.0MP@25fps, 3.6mm (90°), 0.001lx 24/7 colour, true WDR, built-in mic, CVI/AHD/TVI/SD DIP switch, IP67, IK10, 12VDC

VSCVI-2DFCG
(3.6, 2.0MP)



Specialty HDCVI Series Up to 4.0MP | Fisheye | Pinhole



SECURVIEW
VICTORY SERIES

4.0MP HDCVI Fisheye

4.0MP, 360° fisheye dome, multiple dewarp modes, true WDR, 3D DNR, IK10, 12VDC

VSCVI4MPFE
(4.0MP)



SECURVIEW
VICTORY SERIES

2.0MP HDCVI PIR / Pinhole

2.0MP@25fps, 2.8mm (101°), HDCVI/SD switchable video out, pet immune passive-infrared sensor up to 18kg, 12m detection range, 100° arc, 12VDC

VSCVI2MPPIRC
(2.8, 2.0MP)



SECURVIEW
VICTORY SERIES

2.0MP HDCVI Pinhole Cam

2.0MP@25fps, 3.6mm (92°), true WDR, discreet pinhole body, 700m video transmission distance over coaxial cable, HDCVI/SD switchable video out, 35 x 30 x 22mm, 12VDC

VSCVI2MPPH3.6
(2.0MP, 3.6mm)

The ultimate in Ultra HD over coaxial surveillance.

» Pro motorised & Ultimate motorised HDCVI surveillance

Pro & Ultimate HDCVI Series Up to 8.0MP | Motorised Lens | Dual Voltage



Ultimate 16 Channel DVR

Record 4.0MP@15fps, supports 64CH IP up to 12.0MP, H.265, 8 x HDD up to 10TB each, 2 x HDMI, VGA, CVI/AHD/TVI/composite, alarm & audio I/O, face detect, people counting

CVR16ULT
(16CH, 4.0MP)



Pro 2.0MP Motorised Bullet

2.0MP@25fps, 2.7~13.5mm (102~29°), 60m IR, true WDR, HDCVI/SD switch video out, 0.005lx, IP67, 12VDC/24VAC

VSCVI2MPFBIRMV3
(2.0MP)



Pro 4.0MP Motorised Bullet

4.0MP@25fps, 2.7~12mm (98~26°), 60m IR, true WDR, HDCVI/SD dual video out, IP67, 12VDC/24VAC

VSCVI4MPFBIRM
(4.0MP)



Pro 8.0MP Motorised Bullet

8.0MP@15fps, 3.7~11mm (112~46°), 80m IR, true WDR, CVI/AHD/TVI/SD DIP switch, 0.005lx, IP67, 12VDC

VSCVI-8BIRMG
(8.0MP)



Pro 2.0MP Motorised Dome

2.0MP@25fps, 2.7~13.5mm (109~29°), 30m IR, true WDR, CVI/AHD/TVI/SD DIP switch, IP67/IK10, 12VDC/24VAC

VSCVI2MPVDIRMV4
(2.0MP)



Pro 4.0MP Motorised Dome

4.0MP@25fps, 2.7~12mm (98~26°), 60m IR, true WDR, HDCVI/SD dual video out, IP67, 12VDC/24VAC

VSCVI4MPVDIRME
(4.0MP)



Pro 5.0MP Motorised Dome

5.0MP@20fps, 2.7~13.5mm (109~29°), 30m IR, true WDR, CVI/AHD/TVI/SD DIP switch, IP67/IK10, 12VDC/24VAC

VSCVI-5DIRMD
(5.0MP)



Pro 8.0MP Motorised Dome

8.0MP@15fps, 3.7~11mm (112~46°), 60m IR, true WDR, CVI/AHD/TVI/SD DIP switch, 0.005lx, IP67, 12VDC

VSCVI-8DIRMG
(8.0MP)



Ultimate 2.0MP Motorised Bullet

2.0MP@25fps, 2.7~12mm (95~36°) auto-iris, 100m IR, true WDR, HDCVI/SD dual video out, 0.005lx, alarm & audio, IP67, 12VDC/24VAC

VSCVI2MPFBIRM100M
(2.0MP)



Ultimate 8.0MP Motorised Bullet

8.0MP@12fps, 3.7~11mm (112~46°) auto-iris, 100m IR, true WDR, HDCVI/SD dual video out, 0.005lx, alarm & audio, IP67, 12VDC/24VAC

VSCVI8MPFBIRM
(8.0MP)



Ultimate 2.0MP Motorised Dome

2.0MP@25fps, 2.7~12mm (95~36°) auto-iris, 50m IR, true WDR, HDCVI/SD dual video out, 0.005lx, alarm & audio, IP67/IK10, 12VDC/24VAC

VSCVI2MPVDIRM50M
(2.0MP)



Ultimate 8.0MP Motorised Dome

8.0MP@12fps, 3.7~11mm (112~46°) auto-iris, 50m IR, true WDR, HDCVI/SD dual video out, 0.005lx, alarm & audio, IP67/IK10, 12VDC/24VAC

VSCVI8MPVDIRM
(8.0MP)

PTZ HDCVI Series Up to 4.0MP | Up to 30x Zoom | Ultra Low Light



2.0MP 25x Zoom HDCVI PTZ

2.0MP@25fps, 4.8~120mm (59~2.4°), 150m IR, true WDR, HDCVI/SD switch video out, audio & alarm, 0.005lx, 360° endless pan, -15°~90° tilt, IP67, 24VAC

VSC12MPPTZIRBV2
(25x, 2.0MP)



4.0MP 30x Zoom HDCVI PTZ

4.0MP@25fps, 4.5~135mm (60~2.2°), 100m IR, true WDR, HDCVI/SD switch video out, audio & alarm, 360° endless pan, -15°~90° tilt, IP67, 24VAC

VSC41MPPTZIRB
(30x, 4.0MP)



2.0MP 25x Zoom HDCVI PTZ

2.0MP@25fps, 4.8~120mm (62~2.6°), 150m IR, true WDR, HDCVI/SD switch video out, audio & alarm, 0.005lx, 360° endless pan, -15°~90° tilt, IP66, 24VAC

VSC12MPPTZIRV3
(25x, 2.0MP)



4.0MP 30x Zoom HDCVI PTZ

4.0MP@25fps, 4.5~135mm (60~2.2°), 100m IR, true WDR, HDCVI/SD switch video out, audio & alarm, 360° endless pan, -15°~90° tilt, IP66, 24VAC

VSC41MPPTZIR
(30x, 4.0MP)

HDCVI Accessories Alarm | Baluns | Compatibility | Cable Looms



SECURVIEW

HDCVI Alarm Relay Module

Add 16/6 alarm input/output via RS485 to HDCVI DVRs, connect multiple modules, 12VDC via DVR

VSCVIARB (incl. 2-way power splitter)



SECURVIEW

Passive 4K HDCVI Balun Pair

Utilise CAT5e/CAT6 for HDCVI installs, <100m@4K/UHD, <200m@4.0MP, 250m@2.0MP, 400m@1.0MP

VSBALHDP
(balun pair)

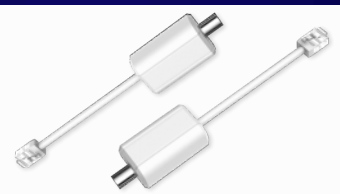


SECURVIEW

Coax Transmission Selector

For HD/SD switchable HDCVI cameras, switch between HDCVI/TVI/AHD & composite without using DVR OSD

VSSELECT101



SECURVIEW

Ethernet Over Coax Pair

ePoE switch to ePoE IP camera over coaxial cable, 400m@100Mbps and 1000m@10Mbps (using RG59)

VSEOCPAIRV2

SECURVIEW

Ethernet over Coax Extenders

Extend Data/Power from PoE switch over coax. Extend over coax up to 400m @100Mbps & up to 1000m@10Mbps (using RG59 coax)

*Transmitter & receiver sold separately

VSEOC-ATX (Transmitter)
VSEOC-ARX (Receiver)



SECURVIEW

4 & 8 Port Passive HDCVI Balun

Transmit coax video signal over UTP, supports HDCVI/TVI/AHD signals, transmit HD video up to 400m (passive/passive) and up to 600m (passive/active), supports CAT5/5e/CAT6 UTP, incl. rackmount parts

VSBALHDP4
(4 Port)

VSBALHDP8
(8 Port)



SECURVIEW

HDCVI Video Isolator

Solve image interference caused by ground loops, 75Ω BNC male to female, 100MΩ insulation resistance, 800V isolation voltage, 600V ESD contact discharge, 4KV 10/700us surge protection, 400mm cable length

VSGLI

SECURVIEW

HDCVI Encoder & Decoder

- Extend CCTV to spot monitors over coaxial cable; split to VGA, HDMI, composite & inline HDCVI
- HDCVI & HDMI feed to monitors over coax.
- Includes power supplies for encoder & decoder

VSCVIDEODEC
(HDCVI to HDMI/VGA/
Composite)

VSCVIENCODER
(HDMI to HDCVI)



Build high speed networks that connect your installations.

» Wide range of high speed Ethernet, fibre & PoE network solutions

Gigabit Ethernet Switch Series Up to 24 Ports | 10/100/1000M | Unmanaged



Gigabit Ethernet Switches

- Available in 5, 8, 16, 24 port modules
- 10 / 100 / 1000Mbps Gigabit Base-T ports
- Unmanaged switch easy plug & play
- Professional full metal enclosure
- Home, office & business applications
- Desktop / SOHO switches (5 & 8 port)
- Rackmount tabs included (16 & 24 port)
- Overvoltage protection up to 4kV

VSETH-SW5G
(5 port, 5VDC)

VSETH-SW8G
(8 port, 9VDC)

VSETH-SW16G
(16 port, 240VAC)

VSETH-SW24G
(24 port, 240VAC)



9-port Gigabit DIN Rail Fibre Access Ethernet Switch

- 5 x 1000Mbps Base-T ports
- 4 x 1000Mbps Base-X SFP ports
- Professional metal enclosure
- Overvoltage protection up to 4kV
- DIN rail mountable
- Unmanaged switch

VSETH-SW9GF
(9 port, 9~57VDC)



Mini GBIC Multimode Fibre Adapter

- Mini GBIC/SFP adapter for Base-X SFP ports
- Multimode; supports OM1/OM2/OM3/OM4
- Up to 550m transmission distance (OM2)
- Transfer speeds of up to 1.25Gbps
- Hot pluggable & optical power monitoring

SFPM1
(LC Connector)



PoE Midspan, Injector Extender

PoE Midspan & Extender: 60W midspan, Delivers PoE to IP cameras up to 300m (<8W per cam) via 3 x PoE extenders (VSPOE-EX)

PoE Injector: 30W PoE+, 1000Mbps, 240VAC

VSPOE-MS
(Midspan)

VSPOE-EX
(Extender)

VSPOE-IN30
(Injector)

Require pre-configured wireless networking APs? **We can help.**
We will pre-configure your LiteBeam APs **at no extra cost.**

WT5-ULB-PACKA: 2 modules, wireless bridge configuration

WT5-ULB-PACKB: 3 modules, point-to-point configuration

5GHz PowerBeam Long Range Access Point

- High performance 25dBi 5GHz antenna, +25km range, passive PoE
- 10/100/1000M, $\pm 20^\circ$ tilt adjustment, includes radome shield
- Ideal for long-range point-to-point/multi-point applications

5GHz LiteBeam & Nanostation Access Points

- Ideal for outdoor point-to-point/multi-point applications
- **LiteBeam:** 120° 16dBi 5GHz 1000M antenna, passive PoE
- **NanoStation:** 43° 16dBi 5GHz 100M antenna, passive PoE

WT5-UPBAC52
(PowerBeam)

WT5-ULB
(LiteBeam)

WT5-UNS
(NanoStation)



4G, WiFi & VoIP

4G Modem Router with WiFi

- LTE CAT4 connections of up to 150Mbps
- 4 x Gigabit (1000M) ports for LAN/WAN
- 250m WiFi coverage, up to 32 devices
- 1 x USB port; 1 x RJ11 for VoIP
- 4G: FDD 700/900/1800/2100/2600
- 3G UMTS B1/B8 1900/2100MHz

VSWAN4GHWI
(4G SIM not incl.)

Professional DIN rail PoE network solutions.

Take camera installs further with ePoE.



4 & 8 Port PoE+ DIN Rail Ethernet Switches

- In 4 & 8 100Mbps PoE+ device ports
- 1x 1000Mbps Base-T uplink port
- 1x 1000Mbps Base-X SFP uplink port
- Unmanaged switch plug & play
- PoE+ 30W per port; total PoE load 60W (4 port), 96W (8 port)
- DIN rail mountable

VSPOE-SW4
(4 port, 60W)

VSPOE-SW8
(8 port, 96W)



4 & 8 Port PoE+ DIN Rail Ethernet Switches

- 3 x 100Mbps PoE+ ePoE device ports
- 1 x 100Mbps Hi-PoE ePoE device port
- 1x 1000Mbps Base-T uplink port
- 1x 1000Mbps Base-X SFP uplink port
- Unmanaged switch plug & play
- 1 x Hi-PoE (60W) & 3 x PoE+ ports (30W); Total PoE load 96W
- ePoE ports extend transmission up to 800m (10Mbps), up to 300m (100Mbps)
- DIN rail mountable

VSPOE-SW4E
(4 port, 96W)



8 Port Fast Hi-PoE Unmanaged Switch

- 7 x 100Mbps PoE+ Base-T device ports
- 1 x 100Mbps Hi-PoE Base-T device port
- 2 x 1000Mbps Base-T uplink ports
- Professional full metal enclosure
- Desktop mount for home or SOHO
- Unmanaged switch, plug & play
- 30W per port (60W Hi-PoE); total PoE power load up to 96W

VSPOE-SWA8G
(8 port, unmanaged)



16 Port Fast Hi-PoE Managed Switch

- 14 x 100Mbps PoE+ Base-T device ports
- 2 x 100Mbps Hi-PoE Base-T device ports
- 2 x 1000Mbps Base-T uplink ports
- 2 x 1000Mbps Base-X SFP uplink ports
- Rackmount tabs for cabinet mounting
- L2 Managed switch; security & customisation
- 30W per port (60W Hi-PoE); total PoE power load up to 240W

VSPOE-SWA16
(16 port, L2 managed)



24-port Fast Hi-PoE Managed Switch

- 22 x 100Mbps PoE+ Base-T device ports
- 2 x 100Mbps Hi-PoE Base-T device ports
- 2 x 1000Mbps Base-T uplink ports
- 2 x 1000Mbps Base-X SFP uplink ports
- Rackmount tabs for cabinet mounting
- L2 Managed switch; security & customisation
- 30W per port (60W Hi-PoE); total PoE power load up to 360W

VSPOE-SWA24
(24 port, L2 managed)

Gigabit PoE Ethernet Switch Series Up to 24 Ports | 10/100/1000M | Hi-PoE



8 Port Gigabit Hi-PoE Unmanaged Switch

- 7 x 1000Mbps PoE+ Base-T device ports
- 1 x 1000Mbps Hi-PoE Base-T device port
- Durable full metal enclosure
- Desktop mount for home or SOHO
- Unmanaged switch, plug & play
- 30W per port (60W Hi-PoE); total PoE power load up to 96W

VSPOE-SWB8G
(8 port, unmanaged)



16 Port Gigabit PoE Managed Switch

- 16 x 1000Mbps PoE+ Base-T device ports
- 4 x 1000Mbps Base-X SFP uplink ports
- Professional full metal enclosure
- Rackmount tabs for cabinet mounting
- L2 Managed switch; security & customisation
- 30W per port; total PoE power load up to 250W

VSPOE-SWB16G
(16 port, L2 managed)



24 Port Gigabit PoE Managed Switch

- 24 x 1000Mbps PoE+ Base-T device ports
- 4 x 1000Mbps Base-X SFP uplink ports
- Professional full metal enclosure
- Rackmount tabs for cabinet mounting
- L2 Managed switch; security & customisation
- 30W per port; total PoE power load up to 370W

VSPOE-SWB24G
(24 port, L2 managed)

Scalable IP intercom systems, fit for homes to apartments.

» Residential, multi-tenant and apartment intercom systems

Residential Intercom Series IP & 2-Wire Models | Door Stations | Room Stations



Complete WiFi IP Intercom Kit

- Complete system for rapid installation
- Setup via WiFi or Ethernet, power via PoE
- 1.0MP WiFi door station & WiFi 7" monitor
- Up to 32GB microSD storage (on monitor)
- Includes 30m Ethernet cable for install

INTIPRKITD
(Monitor & door station)



2-Wire Residential Intercom Systems

- Use existing 2-wire cable to upgrade old intercoms
- 7" touch monitor & 1.0MP IK07 flush mount door station
- Add network controller: Connect to LAN/Internet for full remote live view, snapshots, unlock & more (PSU included)
- 24V PSU included with network controller

INTIPRDSVW2W
(Door station)

INTIPMONFB2W
(7" Monitor)

INTIPNC2W
(Net Controller)



1.0MP WiFi IP Door Station

1.0MP, low-light, wide 2.2mm lens (125°), connect via WiFi, 13.56MHz card reader, PoE/12VDC power, 1 x door relay (expandable), IP65 front glass, ABS matte black, surface mount

INTIPRDSDB
(WiFi, 1.0MP)



2.0MP 2-Button Door Station

2.0MP, low-light, wide 1.9mm lens (140°), 13.56MHz card reader, surface mount, PoE/12VDC power, 1 x door relay (expandable), metal construction, IP65 front glass, IK08

INTIPDDS2
(2.0MP)



1.3MP IK07 Door Station

1.3MP, low-light, 2.8mm lens (120°), surface mount, 12VDC power, 1 x door relay (expandable), metal, IP54/IK07 rated, incl. surface rain shield, flush mount sold separately

INTIPRDSVW
(Incl. rain shield box)



7"/10" IP Intercom WiFi Monitors

1024 x 600 touchscreen, 6/1 alarm I/O, 1 x RS485, 32GB storage, PoE/12VDC, surface wall mount, WiFi / Ethernet, indoor only

INTIPMONDWL
(10", White)

INTIPMONDW/B
(7", White/Black)



7" Handset Intercom Monitors

1024 x 600 touchscreen, 6/1 alarm I/O, 1 x RS485, 32GB storage, PoE/12VDC, surface or desktop mount, Ethernet, indoor only

INTIPMONDWH/BH
(White/Black)

INTIPMONDH-B
(Desktop bracket)

Multi-tenant Intercom Series Modular Design | Scalable | 100+ Devices



Multi-tenant IP Intercom Series

- System calls individual monitors, ideal in duplexes, hotels, etc.
- Build systems from 1~20 door stations & 1~100 monitors
- Camera master module supplies power to the slave modules
- Tailor systems with a range of intercom door station modules
- 1.0MP low-light door station camera with backlit name plate
- Access and configure modules through door station web interface
- Multiple button modules designed to fit a variety of applications
- Add multiple access options including keypad, card & biometric
- Variety of surface and flush mount housing layouts



Add up to
100
Rooms



Unlock
a 2nd
Door

INTIPVDS (Camera
Master Module)

INTIPDM (RS485
Door Expander)

2 Module
Mount Kits

INTIPVDSFP2 (Cap)

INTIPVDSFB2 (Flush)

INTIPVDSSB2 (Surface)

3 Module
Mount Kits

INTIPVDSFP3 (Cap)

INTIPVDSFB3 (Flush)

INTIPVDSSB3 (Surface)



INTIPVDSB1
(1-button module)



INTIPVDSB
(3-button module)



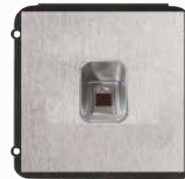
INTIPVDSB5
(5-button module)



INTIPVDSK
(Keypad module)



INTIPVDSR
(Reader module)



INTIPVDSF
(Fingerprint module)



INTIPVDSN
(Blank module)

Apartment Intercom Series SIP Intercoms | Centrally Managed | Scalable

Large installations up to 5000 devices.



INTIPADSC
(Stainless steel)

INTIPADSB
(Black)

INTIPAFM103 (Flush box)
INTIPASM110 (Surface box)



Apartment IP Intercom Door Stations

- Centrally managed systems, ideal in apartments, hotels, etc.
- 5000 total devices (max. 600 door stations)
- Session Initiation Protocol (SIP)
- Forward video/audio messages to iOS or Android mobile apps
- 1.3MP low light camera
- Backlit with proximity sensor (1m detection) option for glass front touch keypad (-B model) or IK07 rated stainless steel (-C model)
- Single door control interface, option for lift control integration
- 3" STN display, local access via keypad or Mifare card reader
- Door stations feature tamper and are built for outdoor use
- Supports lift control (optional)
- Surface & flush mount boxes (INTIPADSB flush mount only)



7" SIP IP Intercom Monitor

Supports SIP for large intercom installs, 800 x 480 touchscreen, 6/1 alarm I/O, 1 x RS485, 32GB storage, surface wall mount, Ethernet, indoor only, 12VDC/PoE (requires INTIPMONPOE)

INTIPMON



Apartment IP Intercom SIP Server

Facilitates intercom communication using SIP, support up to 5000 devices, supports unlimited accounts, build scalable systems, manage cards & fingerprints, integrate with CCTV

INTIPSIPSRV



6 Port Intercom PoE Switch

Inline PoE switch facilitates network & power for up to 6 IP intercom monitors, 45W maximum switch power load, incl. 24VDC PSU, surface and DIN rail mounting options

INTIPMONPOE



Apartment IP Intercom Console

Master console for apartment intercom systems, emergency calling from any connected station, 2-way talk, remote door unlocking, 10" LCD touch screen, 100Mbps, 12VDC

INTIPMS

Large access control installs made simple with VIP Vision.

» Remove cost & complexity with access control built for business

Access Controllers Control up to 2000 Doors | Free PC Management Software



Professional & Compact IP Access Controllers

- Quick-install, affordable access control in small to medium enterprise
- Available in 2-door 2-way, 4-door 1 & 2-way & 8-door 1-way controllers
- Access management & CCTV integration via free Smart PSS software
- Cascade up to 255 slave controllers for over 2000 total door capacity
- Configure users/roles & departments; up to 100,000 cards & 150,000 records
- Anti-passback, multi-door unlock, multi-card open, door time-out & more
- **ACCON-2C41:** Compact plastic body, 4 x readers, 9/5 input/output, 9~15VDC
- **ACCON-2P22:** Pro metal body, 4 x readers, 8/4 input/output, 240VAC
- **ACCON-2P41:** Pro metal body, 4 x readers, 9/5 input/output, 240VAC
- **ACCON-2P42 & 2P81:** Pro metal body, 8 x readers, 20/12 input/output, 240VAC

ACCON-2C41
(Com, 4-door 1-way)

ACCON-2P22
(Pro, 2-door 2-way)

ACCON-2P41
(Pro, 4-door 1-way)

ACCON-2P42 / 2P81
(Pro, 4-door 2-way)
(Pro, 8-door 1-way)

Access Readers 13.56MHz RFID | Keypad & Fingerprint | Enrolment



13.56MHz Access Control Readers

Professional card, keypad & fingerprint access readers, LED indicators & backlit buttons, tamper protection

ACRDR-2PC: Card reader, IP67 rated, 9~15VDC

ACRDR-2LKC: Large card reader & touch keypad, IP55 rated, 9~15VDC

ACRDR-2MKC: Metal-body card reader & keypad, IP55/IK08, hard buttons, 9~15VDC

ACRDR-2SC: Slim card reader, IP65 rated, 5~16VDC

ACRDR-2SKC: Slim card reader & touch keypad, IP65 rated, 5~16VDC

ACRDR-2SFC: Slim card reader & fingerprint reader (up to 3000 records), IP55 rated, 9~15VDC



Card & Fingerprint Enrollers

Enrolment devices for cards & fingerprints, connected & powered via USB, used in conjunction with free Smart PSS application

ACENR-2C: Card enrolment device, 13.56MHz RFID cards & tags, confirmation tone/light

ACENR-2F: Fingerprint enrolment device

ACRDR-2PC

ACRDR-2LKC

ACRDR-2MKC

ACRDR-2SC

ACRDR-2SKC

ACRDR-2SFC

ACENR-2C

ACENR-2F

Perfect for single door access control installs.



125KHz Standalone Access Control Systems

- Standalone card & code access, programmed via reader keypad
- Built-in door chime relay contact, tamper switch & vandal lock out
- Data I/O bus for multi-station systems for up to 3 slave ACRDR100
- Compatible with split decoded controllers for additional security
- Each unit includes 2 x access control key cards

Optional Split-Decoded Access Controller

- Splits door strike unlock signal from reader, prevents sabotage
- Built-in door chime and tamper alarm; vandal lock out
- Control terminals for alarm integration, 3 output relays
- Integrates with up to 3 keypads/readers; incl: 2 x keyfobs
- Power input: 12~24VDC auto-adjusting



ACRDR100
(IP55, 12VDC)



ACRDR102
(IP55, 12VDC)



ACRDR103
(IP65, 12VDC)



ACRDR101 (incl. 2 keyfobs)
ACRDR101-R (add. remote)

Access Control Accessories Electric Strikes | Maglocks | Door Releases | Cards & Keyfobs



ACLOC100 ACLOC101 ACLOC104 ACLOC102 ACLOC103



Mortise & Surface Electric Door Strikes

- High quality electric door strikes for intercoms & access control
- Variety of fail-safe/secure, monitored and multi-voltage models
- **ACLOC100:** Steel, mortise, fail-secure, 12VDC
- **ACLOC101:** Steel, surface, fail-secure, 12VDC
- **ACLOC104:** Chrome, surface, fail-secure, 12VDC
- **ACLOC102:** Stainless steel, mortise, fail-safe/secure, monitored, 12VDC
- **ACLOC103:** Stainless steel, mortise, fail-safe/secure, monitored, 12V/24VDC and 12V/24VAC convertible voltage



MAGLOC100S (Surface mount)
MAGLOC100M (Mortise mount)



Electro Magnetic Door Locks

- High quality electro magnetic locks
- Fail-safe / direct pull configuration
- Rated at 270kg holding force
- 12VDC / 24VDC power input
- Anodised aluminium, zinc finish
- Available in mortise & surface mount models



13.56MHz RFID Card/Keyfobs

For VIP Vision Access Control systems
Mifare NFC chip, read-only memory

ACKEY103
(Card, 10pcs)

ACKEY104
(Keyfob, 1pc)



ACDSW100 ACDSW101 ACDSW102



Door Release Switches

- Door release for access control
- 500,000 mean-time between failures
- **ACDSW100:** Heavy duty, sandblasted aluminium, 3 outputs (N.O, N.C, COM)
- **ACDSW101:** Slim, stainless steel, 2 outputs (N.O, COM)
- **ACDSW102:** Touch button, aluminium, 3 output (N.O, N.C, COM), red/green status LEDs, adjustable output timer 1~40s



125KHz RFID Card/Keyfobs

For Watchguard standalone systems
64-bit/ASK; wallet, lanyard & keyfob

ACKEY100
(Wallet, 10pcs)

ACKEY101
(Lanyard, 10pcs)

ACKEY102
(Keyfob, 10pcs)

Add back-up power & boost install value with Socomec UPS.

» Safeguard CCTV, access, alarm & IT installs with Socomec™ UPS

NETYS PE Series Up to 2000VA /1200W | Overvoltage Protection | Desktop



UPS650VA UPS850VA UPS1000VA UPS1500VA UPS2000VA

Practical & cost effective protection.



NETYS PE Series UPS - 650VA to 2000VA

- Easy to install, perfect for home, SOHO & small business use
- Connect devices easily via multiple Australian standard sockets
- Maintenance free, sealed lead-acid battery with 3~5 years expected life
- Voltage independent, line interactive with auto-voltage regulation (AVR)
- AVR stabilises output voltage, avoid needless switching to battery mode
- Output protection against overload, significant discharge & short circuit
- Integrated RJ45 protection against line overvoltage for LAN/ADSL
- **UPS650VA:** 650VA/360W, 2 sockets, LED indicators, ~28min@72W
- **UPS850VA:** 850VA/480W, 2 sockets, LED indicators, ~26min@95W
- **UPS1000VA:** 1000VA/600W, 4 sockets, LCD info display, ~44min@120W
- **UPS1500VA:** 1500VA/900W, 4 sockets, LCD info display, ~32min@180W
- **UPS2000VA:** 2000VA/1200W, 4 sockets, LCD info display, ~24min@240W

NETYS PR Series Up to 3300VA /2700W | Overvoltage Protection | Tower/Rackmount

High performance rackmount UPS.



NETYS PR Series UPS - 1700VA to 3300VA

- Professional functions & appearance, easy rackmount or tower use (2U)
- Connect devices via IEC320 standard sockets (up to 8 x 10A, 1 x 16A)
- Maintenance free, sealed lead-acid battery with 3~5 years expected life
- Voltage independent, line interactive with auto-voltage regulation (AVR)
- Battery hot-swap whilst in operation, load segmentation, 0.9 power factor
- Output protection against overload, significant discharge & short circuit
- Integrated RJ45 protection against line overvoltage for LAN/ADSL
- **UPS1700VAXCRM:** 1700VA/1350W, 8 sockets, LCD info display, ~30min@270W
- **UPS2200VAXCRM:** 2200VA/1800W, 8 sockets, LCD info display, ~47min@360W
- **UPS3300VAXCRM:** 3300VA/2700W, 9 sockets, LCD info display, ~31min@540W



UPS1700VAXCRM UPS2200VAXCRM UPS3300VAXCRM



Seagate SkyHawk™ Surveillance HDDs

- We utilise surveillance grade hard disk drives in all surveillance systems and surveillance kits
- Available in 1TB, 2TB, 3TB, 4TB, 6TB 8TB and 10TB models
- Optimised for DVRs & NVRs, SkyHawk™ surveillance drives are tuned for 24x7 workloads in capacities up to 10TB. Equipped with enhanced ImagePerfect™ firmware, SkyHawk helps to minimise dropped frames and downtime with a workload rating 3x that of a desktop drive.
- 180TB/year workload, support for up to 64 cameras per drive, low power consumption drives

HD1TBSV
1TB

HD2TBSV
2TB

HD3TBSV
3TB

HD4TBSV
4TB

HD6TBSV
6TB

HD8TBSV
8TB

HD10TBSV
10TB



SECURVIEW 11W LED Flood IR Illuminator

850nm wavelength, flood style, IP66 weather rated, metal chassis, range 30° (90m) / 60° (50m) / 120° (20m)

VSIR11W30/60/120D
(30°, 60°, 120°)



SECURVIEW 28W LED Flood IR Illuminator

850nm wavelength, flood style, IP66 weather rated, metal chassis, range 30° (170m) / 60° (100m) / 120° (50m)

VSIR28W30/60/120D
(30°, 60°, 120°)



SECURVIEW 60W LED Flood IR Illuminator

850nm wavelength, flood style, IP66 weather rated, metal chassis, range 30° (280m) / 60° (150m) / 120° (75m)

VSIR60W30/60/120D
(30°, 60°, 120°)



VIP Parapet Bracket & PTZ Keyboard

- Capture & manage large sites
- Keyboard: Configure & control IP/HDCVI CCTV systems on a network

VSIPPTZKBV2 (Keyboard)
VSIBKT303S (PTZ Bracket)



VIP Pro Handheld Video Tester

4" display, QWERTY keyboard, camera test & configure (IP up to 8.0MP, coax up to 4.0MP), static IP & DHCP, H.265 support, data cable test (TDR), PoE source/supply test, PTZ config & test, digital multi-meter, 8hrs uptime, 2 x torch

VSTEST101



VIP Pro Touchscreen CCTV Tester

7" touchscreen, camera test & configure (IP up to 8.0MP, coax up to 4.0MP), H.265 support, static IP & DHCP, PTZ test & config, data/coax/fibre cable test (TDR), PoE source/supply test, PTZ config & test, digital multi-meter, HDMI in/out, 8hrs uptime, 1 x torch

VSTEST110



VIP Pro Touchscreen CCTV Tester

7" touchscreen, camera test & configure (IP up to 8.0MP, coax up to 8.0MP), H.265 support, static IP & DHCP, PTZ test & config, data/coax/fibre cable test (TDR), PoE source/supply test, PTZ config & test, digital multi-meter, WiFi strength/speed test, HDMI out, 8hrs uptime

VSTEST111



SECURVIEW Wall/Standing Rackmount Cabinets

- Wall: 4U to 18U, 450mm & 600mm depth
- Freestanding: 12U, 600mm depth
- Tempered glass & steel, lockable doors
- Removable side doors for easy setup
- Flatpacked, assembly required

Rackmount Cabinet Accessories

- Shelves: 450/600mm depth for small DVRs
- Patch panels & data cable management
- In-cabinet power boards & rack cage nuts
- Accessories optional, sold separately

Wall Mount, 450mm Deep

RMC-B4U450W (4U)

RMC-B6U450W (6U)

RMC-B12U450W (12U)

RMC-B18U450W (18U)

Wall Mount, 600mm Deep

RMC-B6U600W (4U)

RMC-B12U600W (6U)

Freestanding, 600mm Deep

RMC-B12U600F (6U)

Shelves for Wall Cabinets

RMC-BS450W (450mm)

RMC-BS600W (600mm)

Shelf for Freestanding Cab

RMC-BS600F (600mm)

Accessories

RMC-PB6 (Powerboard)

RMC-PP24 (Patch panel)

RMC-CM1 (Cable board)

RMC-CG100 (Cage nuts)

New opportunities in vehicle CCTV for automotive installers.

» IP & HDCVI mobile surveillance, tracking & remote view systems

Mobile NVR & HDCVI DVR Series Up to 8 channels | Up to 2.0MP



4 & 8 Channel Mobile PoE NVRs & Mobile Monitors

- Avail. in 4 or 8 channels, precision GPS standard, 4G/WiFi optional
- Stream up to 2.0MP/1080p (200Mbps); complete 4/8 port PoE support
- 2 x 2.5" SATA HDD up to 4TB each, 1 x eSATA port, 1 x SD card slot
- Backup via USB/network or over WiFi (optional), HDMI/VGA/TV ports
- 8/2 alarm input/output, 6~36VDC power input, CAN bus support
- 2 DIN size, lockable HDD/SIM tray

MNVR-GPS
(4CH, GPS only)

MNVR-GPS4GW
(4CH, GPS/4G/WiFi)

MNVR-GPS8GW
(8CH, GPS/4G/WiFi)

LCD7SDA
(7" Monitor, 800x480)

LCD10SD
(10" Monitor, 720p)

LCD10FHD
(10" Monitor, 1080p)



4 & 8 Channel Mobile HDCVI DVRs

- Avail. in 4 or 8 channels, precision GPS standard, 4G/WiFi optional
- Support for HDCVI and analogue video inputs, 1 x VGA / 2xTV outputs
- Backup via USB/network, lockable HDD/SIM tray, M12 camera inputs
- 7/2 alarm input/output, 6~36VDC power input, CAN bus support
- **4CH:** Records 2.0MP at 2CH + 1.0MP at 2CH at 25fps
- **8CH:** Records 2.0MP at 25fps across 8 channels
- 1 x 2.5" SATA port & SD card slot
- 2 x 2.5" SATA port & SD card slot

MCVR-GPS
(GPS only)

MCVR-GPS4GW
(GPS/4G/WiFi)

MCVR-GPS8
(GPS only)

MCVR-GPS8GW
(GPS/4G/WiFi)

Camera Cable: MCVR-CABLE3M/6M/12M/18M
Display Cable: MCVR-VGACABLE3M (300mm)



HDCVI Mobile Cameras

Mini Dome Camera

- Stream 2.0MP (1920x1080)
- 3.6mm lens (H: 83° view)
- Built-in mic & 20m infrared
- IP67 rated metal body
- Auto day/night (IR cut filter)
- Heavy duty M12 connector

VSCVI2MPDIRAT
(Mini Dome)

Bumper Camera

- Stream 2.0MP (1920x1080)
- 3.6mm lens (H: 83° view)
- Built-in mic & 20m infrared
- IP67 rated metal body
- Auto day/night (IR cut filter)
- Heavy duty M12 connector

VSCVI2MPCIRAT
(Bumper Cam)

Twin Dash Camera

- Twin 2.0MP cameras
- **Rear:** 2.1mm (139° view)
- **Front:** 2.8mm (116° view)
- Built-in mic & 3m infrared
- Auto day/night (electronic)
- Adhesive adjustable mount

VSCVI2MPWTT
(Dash Camera)

IK10 Dome Camera

- Stream 2.0MP (1920x1080)
- 2.8mm lens (H: 111° view)
- 20m IR, 0.005lx low light
- IK10/IP67 rated body
- Auto day/night (IR cut filter)
- Heavy duty M12 connector

VSCVI2MPVDIRFT
V2 (IK10 Dome)

Barrel Camera

- Stream 2.0MP (1920x1080)
- 2.8mm lens (H: 109° view)
- Auto day/night (electronic)
- Heavy duty M12 connector
- IP67 rated metal body
- 30mm diameter hole

VSCVI2MPBT2.8
(Barrel Camera)



Heavy duty mobile surveillance.



4.0MP Heavy Duty IP Vehicle Camera

Designed for use on the exterior of buses, trains, excavators and other large vehicles, this camera offers a robust mobile surveillance experience.

4.0MP@25fps, 2.8mm (104°) lens, 30m IR, true WDR, microSD, IVS, shock resistant to withstand vibration, IP6K9K rated for pressure cleaning and dust ingress, alarm & audio, IK10, 12VDC/PoE

VSIP4MPEIRAT
(2.8mm, 4.0MP)

Total Vehicle Monitoring Twin Cameras | GPS Tracking | Online Management

SECURVIEW

3G/WiFi Total In-Vehicle Surveillance & GPS Tracking System

Dual Cameras: 1080p Full HD road facing camera with wide 140° lens & cabin camera

Remote Access: Remote live view, playback & export footage via Internet to phone app

Vehicle Tracking: Precision, real-time GPS tracking with geo-fencing & history log

2-way Talk: Voice chat at any time between vehicle & connected smartphone

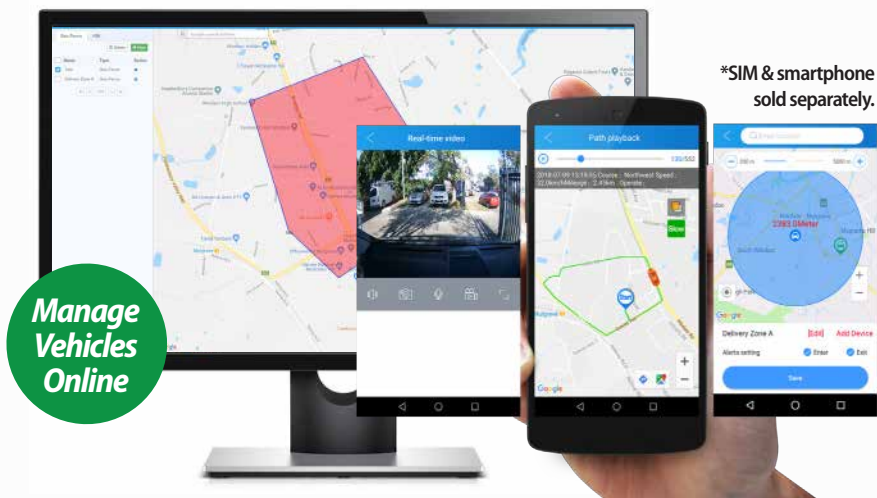
App Control: View history, manage multiple units & send commands via app & web

Live Alerts: Notify of collisions, set speed limits, G-sensor monitors driver behaviour

- 1080p in-vehicle camera with comprehensive GPS tracking
- Adjust/rotate camera orientation to suit different windscreens
- Date, timestamp, latitude/longitude & speed footage overlay
- Features backup battery for operation while engine is off
- Online device registration and account to manage devices
- Kit includes all components for install: power wiring harness, mounting cradle, 3M adhesive mount, SOS alarm button, backup battery, 12V 40A relay and relay cable, screwdriver



MDVR-J200 + 16GB micro SD
(SIM card & phone not included)



*SIM & smartphone sold separately.

Analogue Vehicle Cameras Compact Size | Variety of Applications

Compatible for use with HDCVI mobile DVRs (requires connector change to M12 aviation connector).



Bracket/flush
(18mm), 400TVL,
IP67

MSCAM-B18



Flush mount
(18mm), 420TVL,
5m IR, IP67

MSCAM-FI18



Bracket mount
(28mm), 420TVL,
5m IR, IP67

MSCAM-BI28



Screw mount
(28mm), 420TVL,
IP67

MSCAM-S28



Number Plate
camera, 420TVL,
5m IR, IP67

MSCAM-NPI



Bumper mount,
420TVL, 5m IR,
IP68

MSCAM-TI



Mini dome
mount, 420TVL,
5m IR, IP67

MSCAM-MD



Mini dome with
audio, 420TVL,
5m IR, IP67

MSCAM-MDA



Rhino

Advanced Car Alarm & Immobiliser

- Door, bonnet and boot protection
- Integrated central locking relays, keyless entry
- 1 x AU standards approved 3-point immobiliser
- 2 x Water resistant rolling code remote controls
- 1 x Mini coded backup battery siren
- 1 x Intelligent glass break sensor

RAV3



Rhino

Backup Battery Car Alarm & Immobiliser

- Door, bonnet and boot protection
- Integrated central locking relays, keyless entry
- 1 x Onboard engine 2-point immobiliser
- 1 x 2-stage vehicle body impact sensor
- 2 x Water resistant rolling code remote controls
- 1 x Full size backup battery siren

GTS



Rhino

Basic Keyless Entry & Immobiliser

- Adds remote control to existing central locking
- 1 second pulsed negative outputs (150mA)
- Indicator flash outputs
- Single engine immobilisation circuit
- 2 x Water resistant rolling code remote controls
- Ultra compact 60 x 30 x 13mm

RCXI



Rhino

Two-point Keypad Immobiliser

70% of vehicle thefts are due to stolen keys

- Code must be entered before ignition
- 3min lock after 3 incorrect attempts
- Vehicle protection against key theft
- Automatic arm; less disruption to normal use
- High security all-black wiring harness
- Valet mode: temporary auto arming bypass

IM007

(incl. harness)



RhinoTraks

Advanced 3G GPS Vehicle Tracker

- GPS & GSM antennas, for 11 ~ 36VDC vehicles
- <200g lightweight, footprint 105 x 65mm
- Real-time online speed & location tracking
- Visit www.rhinotracks.com.au for a live demo
- *Monthly SIM fee of \$20/month

RHINOTRACKS-ST4

(*SIM not incl.)



Rhino

2.4GHz 420TVL Reverse Kit

Connect in seconds, 12m transmission distance, 7" LCD, 2 AV channels, 420TVL 2.8mm lens (120°), 30m infrared, IP67, 12V/24VDC, incl. remote

MSKIT-WRC



Rhino

1080p Dash Cam + 16GB SD

3" LCD, 1080p camera with WDR, LED torch, time/date/number plate footage overlay, incl. mount bracket, charge cables, 16GB microSD

MDVR-HDV7

(incl. SD card)



Rhino

4 Sensor Vehicle Reversing Kit

40KHz ultrasonic sensors, 2.5m detect distance, includes siren, sensors, control box & Ø18mm hole saw, 12VDC 20~200mA

MSKIT-RV4



Rhino

4.3" and 7.0" LCD Monitors

4.3" (flip up display) & 7.0" (incl. stand), 480 x 234 (16:9), triggered on reverse, 2/4 video inputs (4.3"/7.0"), includes mounting kits, 12VDC

MSMON-4 (4.3" TFT)

MSMON-7 (7.0" TFT)

Rhino

Heavy Duty 4 Door Central Locking Kit & Door Motors

High quality central locking kit contains 1 x control module with neg lock / unlock pulse inputs, 2 x master and 2 x slave door actuator / lock motors, full wiring harness

Individual master (5-wire) & slave (2-wire) actuator/door motors available



CLKHD
(4 Door Kit)

DLHD101
(Master)

DLHD102
(Slave)



40A, 12VDC,
5 pin, change
over relay

40ARELAY



Metal pin switch,
5 x 65mm, adjust
via screw thread

PINSW



Pin switch, 35
x 53mm, cut to
adjust

PIN409



Right angle pin
switch, 45x60mm,
cut to adjust

PIN410

Showcase amazing 4K installs with Ultra HD displays.

» Televisions, monitors & accessories to output CCTV display

Display Series 4K Monitors & Televisions | Extenders | Brackets

Amaze customers with 4K CCTV image quality.

FLASHVIEW™

28" Ultra HD IPS Surveillance Monitor

- Display 8.0MP cameras at native resolution
- Wide support for different video inputs incl. HDMI, VGA, Display Port, DVI & comp. (BNC)
- Features rear USB port for file playback
- 5ms response time, IPS panel technology
- Built-in high quality stereo speakers
- Professional metal chassis & monitor feet
- VESA 200x200 bracket mount system



acer

19" Acer LCD HD Monitor

1366 x 768, widescreen, 5ms response time, TN panel technology, VGA input, 75x75 VESA bracket mount

LCDACER19

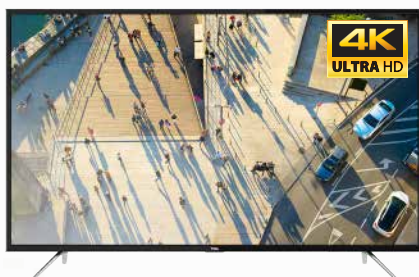


LG

24" LG LCD Full HD Monitor

1920x1080, widescreen, 2ms response time, TN panel technology, VGA/HDMI input, 100x100 VESA bracket mount

LCDLG24TN



TCL

43" TCL Ultra HD LCD Television

4K resolution (3840x2160), quad core CPU, 3 x HDMI, component input, HDR, 2 x USB, streaming apps, WiFi

TVTCL43-4K



SECURVIEW

HDMI Splitter & Extender

2-way HDMI splitter: Supports 4K@30fps, 3D HDMI 1.4a, ESD protection, 5VDC PSU included
CAT6 Extender: extend HDMI 50m over CAT6, supports up to Full HD, transmitter/receiver & 5VDC PSU incl.

HDMISPLIT2 (Splitter)
HDMICAT6EXT50M (Ext.)



SECURVIEW

Professional LCD Mounting Solutions

13~30" Wall Mount Bracket

LDCBKT-A15T
(Tilt)

17~42" Wall Mount Bracket

LDCBKT-A20T
(Tilt)

17~42" Arm Wall Mount Bracket

LDCBKT-A30TS
(Tilt & swivel)

23~42" Ceiling Mount Bracket

LDCBKT-A35C
(Tilt & swivel)

37~70" Large Wall Bracket

LDCBKT-A50T
(Tilt)

Power and cabling solutions for reliable installations.

» Wide range of power & cable for professional installation results

Power Supplies & UPS DIN Rail | CCTV Supplies | Backup Batteries



SECURVIEW

Single Output Industrial DIN Rail Power Supplies

- Available in 12VDC 7.5A (90W) & 24VDC 4.2A (100W)
- Universal AC input (88~264VAC), double insulated
- 12~15V (12V) and 24~29V (24V) voltage adjustable
- Current limiting on overload, auto-shutdown on over voltage/temperature; free air convection cooling; DIN rail TS-35/7.5 & 15

PSDR12V7A
(12V 7.5A)

PSDR24V4A
(24V 4.2A)



SECURVIEW

Heavy Duty Surveillance Power Supplies

- 18 individually fused outputs in a compact metal case, indoor use only
- Thermal cutoff protection, short circuit, high voltage & over current protection
- Input voltage: 100~240VAC / 10A total output current
- 12VDC model: lockable case, 12VDC output voltage, battery backup (not incl.)
- 24VAC model: standard case, 24VAC output voltage

PS12VDC10A18CHB
(12VDC)

PS24VAC10A18CH
(24VAC)



SECURVIEW

4CH 12VDC Power Supply

- 4-channel 12VDC 5A power distribution
- Universal input voltage: 100~240 VAC
- Adjustable output voltage: 12~13.8 VDC
- High voltage and overcurrent protection

PS12V5A4CH



SECURVIEW

12VDC Sealed Lead Acid Batteries

- Low self discharge backup power battery
- Maintenance free sealed lead acid
- Non-spillable, high quality & reliability
- Available in 1.2Ah and 7Ah models

D12V1.2

D12V7



SECURVIEW

600VA Line Interactive UPS

360W / 600VA, 2 sockets, 0.6 power factor, 2 ~ 6ms transfer delay, 1 x 12V 7Ah battery, 15min backup (120W load), power protection & fault alarm alerts

UPS-A600-L



SECURVIEW

1500VA Line Interactive UPS

900W / 1500VA, 4 sockets, 0.6 power factor, 2 ~ 6ms transfer delay, 2 x 12V 9Ah battery, 30min backup (120W load), power protection & fault alarm alerts

UPS-A1500-L



SECURVIEW

1000VA Smart Online UPS

Improved stability over line interactive models 900W / 1000VA, 3 sockets, 0.9 power factor, instant 0ms transfer delay, 2 x 12V 9Ah battery, 45min backup (120W load), LCD display

UPS-B1000-O



SECURVIEW

305m CAT5E / CAT6 UTP Pullbox

Securview ACMA approved Ethernet cable in a range of colours. Unshielded twisted pair.

CAT5EBLU (Blue)
CAT5EWH (White)
CAT5EYL (Yellow)

CAT6BLU (Blue)
CAT6RED (Red)

Pre-terminated CAT5e Looms (Blue)
NETCABLE10 (10m):
NETCABLE20 (20m):
NETCABLE30 (30m):



SECURVIEW

100m Coax Cable

RG59 75Ω coax, 100% copper conductor, 98% copper braiding, solid PE dielectric

DCOAXFC
(100m, coaxial)

SECURVIEW

100m Coax/Power Combo Cable

RG59 75Ω coax, 100% copper conductor, 95% copper braiding, figure 8 (2 x 24/0.2mm)

DCOAXPWR24FCBP
(100m, coaxial/power)



SECURVIEW

100m 4 & 6 Core Alarm Cable

Alarm sensor cable, white outer sheath

D4CC (4-Core, 7/0.20)
D6CC (6-Core, 7/0.20)
D4CC2 (4-Core, 14/0.20)
D6CC2 (6-Core, 14/0.20)



SECURVIEW

100m Figure 8 Cable

Variety of different Figure 8 cable for power, black stripe present on all cable to avoid reverse polarity error, thick gauge & multiple colours.

DF8C (white, 14/0.20) DF8C4W (white, 24/0.75)
DF8C2 (blue, 24/0.20) DF8C4RB (red, 24/0.75)
DF8C3 (red, 48/0.20)



SECURVIEW

Pre-terminated Power/Coax

20m & 30m power/coax combo looms, RG59 quality, 4K capable (chain limit: 1 x 20m loom, up to 2 x 30m looms)

VIDPWR20RG59 (20m)
VIDPWR30RG59 (30m)

Power & Cabling Accessories Plug Packs | Crimp Tools | Connectors

SECURVIEW

12VDC Switch-mode PSU

- Available in 2A and 5A models
- 240VAC input, 12VDC output
- 2.1mm DC jack terminated

PS2000SM (12VDC 2A) PS5000SM (12VDC 5A)

Power Splitter Cables

DC4CHLOOM (4-way splitter)
DC5CHLOOM (5-way splitter)
DC8CHLOOM (8-way splitter)



SECURVIEW

Professional Cabling Tools

CRIMPTOOLRJ45: 6 pin/8 pin crimp/strip tool for RJ45/RJ11/RJ12
VSComPTOOL: 7.6" compression tool for F/RCA/BNC/RG59/RG6
TSA50: Heavy duty 5-size BNC/TNC crimp tool RG58/RG6

CRIMPTOOLRJ45
VSComPTOOL
TSA50

SECURVIEW

Plugs & Connectors

BNC, Power and RJ45 plugs and cable connectors
Please contact us for our full range and bulk pricing



RJ45PLUGS

VSFBNC

VSFB2(R/B)

VSFBNC(59/6)

VSFBPFJ

VSFBNCTWIST

VSDCPFTB / MTB

Professional, scalable alarm systems with easy app control.

» New Watchguard™ 864 remote view & communication options

Hardwired Alarm Panel 8 Zone Panel | Expand to 64 Zones | Alarm Communicators



Professional building security up to 64 zones.



Professional 8/64 Zone Alarm Panel

- 8 zone panel & keypad, expand up to 64 zones
- 8 partitions, up to 25 programmable outputs
- Easily programmable via windows PC
- Scalable to suite a wide range of applications
- Dedicated panic zone & monitored siren output

WGAP864
(Incl. 1 x Keypad)



864 Panel IP Module

- Control via phone or tablet from anywhere
- Easy to install, simply connect to the network
- End-user oriented app, powerful & easy to use
- Remote arm/disarm, bypass, panic, trigger outputs (turn on lights/gate), configure alerts

WGAP864IPM
(Free application)



4G/IP/SMS Alarm Communicator

- Be NBN ready - enable panel communication to monitoring centres via 3G, 4G and IP*
- Or, switch panel to self-monitored alarm via SMS
- Configurable via PC or SMS commands

*DC09 protocol centres, SIM card sold separately

WGSMS
(IP / 4G / SMS)



8 Zone Plug-in Expanders

Board expander modules, add 8 zones each, easy addition to panel, end of line supervised inputs

WGAP864EXP816
(8~16 zones)
WGAP864EXP1664
(16+ zones)



864 Panel Wireless Receivers

Wireless zone & remote receivers, add up to 4 units per system, 2 on-board outputs, programmed via 864 panel

WGAP864WRX16V2
(Up to 16 zones)
WGAP864WRX2
(Up to 32 remotes)



864 Panel LCD Keypad

Professional backlit keypad, add up to 8 keypads per system, main programming interface for panel

WGAP864KP



Programming USB Module

Easy USB interface unit for high speed programming of panel via a windows PC, includes USB cable for PC

WGAPCABLEUSB



Professional Building Security up to 64 Zones

Trust Watchguard™ to keep you safe, secure and protected with the truly versatile WGAP864 alarm panel. Expand easily up to 64 zones and integrate a wide range of hardwired and wireless sensors to deliver professional building security solutions for home and business.



24/7 Monitoring Centre

Contact ID sent via 4G/3G/IP to DC09 protocol compliant monitoring centre



Self-monitored via SMS

Communicator sends zone alerts via SMS, no monitoring centre required



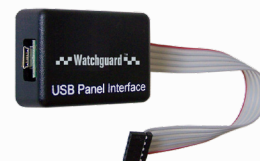
IP Module Self-monitored via App

IP module connects to the router, sends zone alerts to the app; receive notifications, remote control the panel



4G/IP/SMS Communicator

Enables back-to-base monitoring via 3G/IP or self monitoring via SMS messaging



USB Programming Module

USB module for fast 864 alarm panel programming via PC



8 Zone Expanders

8~16 zone and 16+ zone expanders for 864 panel



8 Zone Professional Panel

WGAP864 panel 8 zone starter kit with included keypad plus keypad



Additional Keypads & Batteries

Add up to 8 keypads; 12V7A backup battery



Wireless Receivers

16 zone wireless sensor receiver & 32 remote wireless remote receiver, each feature 2 onboard outputs



Hardwired & Wireless Alarm Sensors/Sirens

- Hardwired PIR motion detectors, smoke detectors, reed switches
- Wireless PIR motion detectors and reed switches
- Wide range of external / internal sirens & strobes

See full range of Watchguard™ hardwired & wireless alarm accessories on the following page.



15m PIR sensor, dual pyro, tamper, N.C, incl. brackets

PIRHWDT2



15m PIR/microwave sensor, N.C, tamper, wall mount

ALH-PIRMW



15m PIR + glass/shock sensor, N.C, 10m glass break dist.

ALH-PIRGS



360° N.C./N.O PIR sensor, Ø8m range (at 4.5m height)

ALH-PIR360



6m curtain PIR sensor, dual pyro, N.C, tamper

ALE-PIRC



Supervised wireless reed PIR for 864 panel, 12m range

WGAP864WPIRV2



Glass break sensor, high false alarm immunity, tamper

ALE-GBD



Compact white N.C wired reed switch

DSRLW



Large ROLA style N.C wired reed switch

DSRHDW



Concealed N.C./N.O wired reed switch (white)

DCRW



Heavy duty roller shutter door N.C wired reed switch

DRSR



Supervised wireless reed switch for 864 panel, 100m LoS

WGAP864WDCV2



Surface door loop, stainless steel tube, plastic (400mm)

DLW



Surface door loop, stainless steel tube, metal (600mm)

DLB



Photoelectric wired smoke sensor, 20m² range, 4-wire relay

SMODET2



Emergency door release, N.O/N.C, flush/surface, 24VDC

DOORRELEASE



Dual button duress switch, N.O contact, rated 1A@25VDC

DEBSDUAL



Surface & Flush mount internal sirens (110dB)

DPS / DPSF



Complete outdoor siren, AC/DC 115dB siren, tamper, strobe

COS



Euro-style siren, 115dB piezo siren, blue strobe, tamper

W24SIREN



130dB, single tone, 240VAC, IP44 warning siren

SIR-H750



4CH Transmitter / Receiver Set

- 433.92MHz multi-function 4CH TX/RX
- Fully programmable 1A relay outputs (momentary, latched, timed, pulsed)
- Add up to 4 wireless sensors
- 2 x code hopping keyfobs, 200m LoS

**RXPROR4
(4CH)**



2CH Transmitter / Receiver Set

- Compact and easy to use 2CH TX/RX
- CH1/2: 1s momentary negative outputs
- CH1: Separate latched negative output
- 2 x code hopping remotes, 200m LoS
- Ideal for garages, gates, etc.

**RCX
(2CH)**



Wired & Wireless Sirens + Battery Backup

- Polycarbonate sirens for the 864 and other alarm panels
- High power siren (up to 120dB) & blue strobe
- Siren timers (3min/20min), 500mA NiMH backup battery
- Wired (SIR500/900) & wireless (SIR500W) models
- Dual tamper - front case and wall pressure tamper switches

**WGSIR-500
(Wired, IP55)**



**WGSIR-500W
(Wireless, IP55)**



**WGSIR-900
(Wired, IP54)**

Rapid install, app-controlled, wireless alarm systems.

» Easily add up to 50 sensors to Watchguard™ 2020 alarms

Wireless Alarms & Accessories WiFi & SMS Alarms | Accessories



2020 SMS Alarm Starter Kit

- Incl. alarm hub, 1 x reed switch, 1 x PIR, 2 x remotes & 2 x RFID tags
- Interact with alarm via control panel, remote control, RFID tag, smartphone app, SMS or a phone call (via 3G network)
- Add up to 50 sensors, 50 RFID tags & 10 remote controls
- Alerts via SMS & phone calls to up to 5 numbers
- 12VDC, 2 x 3.7V 800mA li-ion battery (8hrs)

ALC-PACK1
(SMS Starter Kit)



2020 WiFi Alarm Starter Kit

- Incl. alarm hub, 1 x reed switch, 1 x PIR & 2 x remote keyfobs
- Connects to WiFi router, communicate via app
- Online account for adding multiple alarm users
- Add up to 50 sensors & 10 remote keyfobs
- Notifications in real-time, 2.4GHz IEEE 802.11b/g/n
- 12VDC, 1 x 3.7V 600mA li-ion battery (8+hrs)

ALC-PACK4
(WiFi Starter Kit)



Wireless PIR, pet-immune, 8m 110° detection arc

ALC-PIR1



360° Wireless PIR, Ø6m detection (at 3.6m high)

ALC-PIR2



Solar Wireless PIR, rechargeable, 8m 110° detection, IP65

ALC-PIR4



Wireless standard reed switch, 80m range LoS, tamper

ALC-RSW1



Wireless roller shutter reed, heavy duty, 80m LoS, tamper

ALC-RSW2



720p WiFi camera, 2-way audio, 95° view, app control

ALC-CAM2



Wireless glass break sensor (PSU incl.), flood sensor (battery)

ALC-GB1 (Glass) \$39
ALC-FLD1 (Flood) \$23



Wireless IR Beam sensors, 6m range, UV-resistant, IP66

ALC-BEAM1



Wireless Keypad with 2 x tags, arm/disarm, set alarm modes

ALC-KP1



Wireless Solar Siren & Strobe, 110dB siren, tamper, rechargeable

ALC-SIR2



AC-powered Wireless Siren & Strobe, 90dB, battery backup

ALC-SIR1



Signal Repeater, 12VDC, extend up to 300m line of sight

ALC-RPT1



Wireless panic button, receive alerts, SMS or calls on use

ALC-PNB1



Additional wireless keyfob & access tags (2 pack)

ALC-RC1 (Keyfob) \$19
ALC-TAG1 (Tags) \$14

High performance lighting for commercial & industrial installs.

» Wide range of flood, high bay, canopy & batten LED lighting

LED Flood Lighting Up to 960W | High-efficiency

ENSA™

LFL-F Series: High Power LED Floods

- Available in 480W, 720W and 960W models
- Lumileds LEDs exceptional light output (+165lm/W)
- 60° beam angle, >80 CRI, 6500K cool white, IP66
- Customise lighting for large areas perfectly with 360° rotate & 140° tilt individually adjustable LED modules
- **Ask us about lighting simulation & project assistance**

LFL-F480-C (480W 79,200lm) **LFL-F720-C** (720W 118,800lm) **LFL-F960-C** (960W 158,400lm)



165lm/W
480~960W
6500K

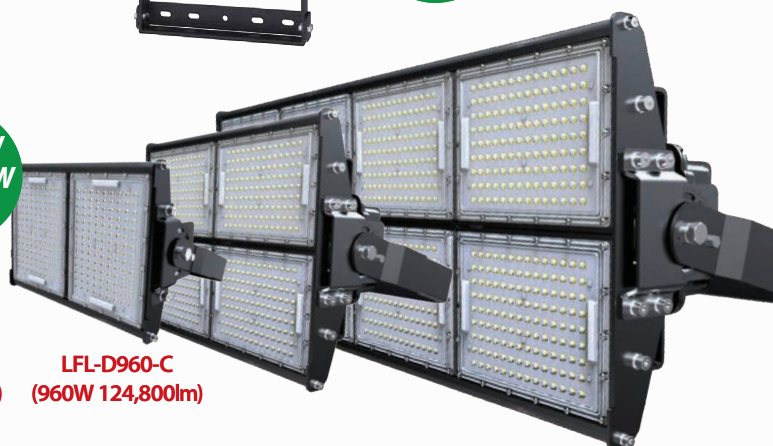
ENSA™

LFL-D Series: High Power LED Floods

- In 240W, 360W, 480W, 720W and 960W models
- Exceptional luminous efficacy (+130lm/W), 50,000hrs lifespan
- Rectangular 60° x 100° beam angle, >80 CRI, 5000K cool white, IP65
- Ideal in large scale applications: sporting facilities, car parks, etc.
- **Ask us about lighting simulation & project assistance**

LFL-D240-C (240W 31,200lm) **LFL-D360-C** (360W 46,800lm) **LFL-D480-C** (480W 62,400lm) **LFL-D720-C** (720W 93,600lm) **LFL-D960-C** (960W 124,800lm)

130lm/W
240~960W
5000K



ENSA™

LFL-B Series: Performance Slimline LED Floods

- In 20W, 30W, 50W, 70W, 100W, 150W and 200W models
- Exceptional luminous efficacy (+100lm/W), 50,000hrs lifespan
- Range is accepted for use in the NSW Energy Savings Scheme
- 100° beam, cool & warm white (3000K/5000K), >80 CRI, IP65 body

LFL-B20-C/W (20W, 2200lm) **LFL-B30-C/W** (30W, 3300lm) **LFL-B50-C/W** (50W, 5500lm) **LFL-B70-C/W** (70W, 7700lm) **LFL-B100-C/W** (100W, 11000lm)

LFL-B150-C/W (150W, 16500lm) **LFL-B200-C/W** (200W, 22000lm)



110lm/W
20~200W
NSW ESS

Food grade LED lighting.

ENSA™

LHB-F Series: Food Grade UFO High Bays

High performance lighting designed for use in food preparation, packaging & manufacturing environments, built for easy maintenance for cleanliness such as pressure cleaning.

- Available in 100W, 150W or 200W models
- IP69K rated body for pressure cleaning
- 135lm/W luminous efficacy, >80 CRI
- IPART approved for use in the NSW ESS
- Prismatic reflector available, sold separately
- 54,000hrs rated LED long lifespan
- In 4000K / 5700K natural / cool white colours
- 120° beam angle, metal eyelet, 3-pin AC plug

LHB-F100-C/N
(100W)

LHB-F150-C/N
(150W)

LHB-F200-C/N
(200W)



100lm/W
60° Beam
NSWESS

ENSA™

LHB-A Series: Traditional High Bays

- In 120W in standard or 0~10V driver*
- Accepted for use in the NSW ESS
- +100lm/W, >80 CRI, 50,000hrs rated LED life
- 6500K cool white, 60° reflector, IP20 rated
- * 0~10V driver model sold separately

LHB-A120-C
(120W, 6500K)



130lm/W
60° Beam
UFO Style

ENSA™

LHB-C Series: UFO High Bays

- Available in 100W & 200W models
- 130lm/W luminous efficacy, >80 CRI
- 50,000hrs rated LED life, IP65 weather rated
- 5500K cool white, 60° beam angle, metal eyelet, 3-pin AC plug

LHB-C100-C
(100W, 5500K)

LHB-C200-C
(200W, 5500K)



130lm/W
120° Beam
UFO Style

ENSA™

LHB-D Series: UFO High Bays

- Light-weight high bay series in 150W models
- 130lm/W luminous efficacy, >80 CRI
- 50,000hrs rated LED life, compact body, IP66
- 5700K cool white, 120° beam angle, variety of mount options, 3-pin AC plug

LHB-D150-C
(150W, 5700K)

Retrofit LED High Bay Lighting Up to 160W | E40 Base Fixture

Energy efficient lighting upgrades done in a flash.

ENSA™

LBL-D Series: E40 Edison Screw High Bay Bulbs

For rapid lighting upgrades of existing metal-halide, sodium/mercury vapour and other HID lamps, with high efficiency, screw-fit E40 high bays LED bulbs.

- Replace high bays quickly without need for operation interruptions
- Available in 100W and 160W E40 screw-fit LED bulbs
- Up to 125lm/W with >80 CRI and >25,000hrs rated LED lifespan
- In 4000K natural & 6500K cool white colour temperature
- Optional reflector to reduce glare and concentrate light

LBL-D100-E40C/N
(100W, cool/natural)

LBL-D160-E40C/N
(160W, cool/natural)

LBL-D100RF
(Reflector for 100W)



ENSA™

Professional LED Canopy Lighting

- **Approved for use in the NSW Energy Saving Scheme**
- High efficiency +100lm/W, available in natural white 4500K
- 90° x 90° square beam angle for even light distribution
- 30,000 hours rated LED lifespan, <3% decay after 6,000hrs
- IP65 rated dust and weather resistant housing
- Canopy light includes kits for surface and recessed mounts:
Surface housing: 320 x 320mm footprint
Recessed housing: 400 x 400mm / Cutout: 320 x 320mm
- Ideal in garages, workshops & petrol stations

LCL-B150-N
(150W, 15500lm)



LED Oyster Lights

 Standard, Sensor & Battery Backup | Motion Sensing

ENSA™

Standard & Intelligent LED Oyster Lighting

- In standard, sensor, and sensor+battery backup models
- Models feature 120° beam angle & 30,000hrs rated lifespan
- Cool white (5000K) & warm white (3000K) colour temps.
- **Standard model:** 16W, 1200lm, no sensors or battery, features vandal and weather resistant IP66/IK10 body
- **Sensor model:** 16W, 1200lm, microwave motion sensor, on-time delay & daylight sensor, IP66/IK10 body (IP44 warm white model)
- **Sensor+Battery model:** 16W, 1200lm, microwave motion sensor, on-time delay & daylight sensor, 3.7V 1500mAh NiMH battery, IP66/IK10 body (*not intended for use as AS2239 emergency lighting)



LOL-A16-W (Warm)
LOL-A16-C (Cool)

LEDDL16W3KS (Warm)
LOL-A16-CS (Cool)

LOL-A16-WSE (Warm)
LOL-A16-CSE (Cool)

LED Sensor Battens

 600/1200mm | Motion Sensing | Light Sensing | Emergency


ENSA™

S Series: IP65 LED Sensor Battens

- In 18W (1350lm) & 36W (3240lm) models
- Light & microwave motion sensor control light
- Set on-time duration & motion sensitivity
- On/off mode only (100% -> 0% brightness)
- 140° beam, 50,000hrs LED lifespan, IP65

LEDBT18WS
(18W, 600mm)

LEDBT36WS
(36W, 1200mm)



ENSA™

S2 Series: IP65 LED Sensor Battens

- **Accepted for use in NSW Energy Saving Scheme**
- In 18W (1600lm) & 36W (3000lm) models
- Light & microwave motion sensor control light
- Adjustable 2 stage dim (100% -> Dim -> Off)
- 120° beam angle, 35,000hrs LED lifespan, IP65

LEDBT18WS2
(18W, 600mm)

LEDBT36WS2
(36W, 1200mm)



ENSA™

SE Series: Emergency LED Battens

- **Accepted for use in NSW Energy Saving Scheme**
- In 18W (1600lm) & 36W (3000lm) models
- Light & microwave motion sensor control light
- 2hrs up-time backup battery, AS2293.3 app.
- 120° beam angle, 35,000hrs LED lifespan, IP65

LEDBT18WSE
(18W, 600mm)

LEDBT36WSE
(36W, 1200mm)

ENSA™

1200 x 300mm Low Glare LED Panel Lighting

- Low <19 Unified Glare Rating for high productivity work lighting
- Range is accepted for use in the NSW Energy Savings Scheme
- High efficiency 90lm/W, in 6000K cool white colour temperature
- Wide 110° beam angle, high >80 CRI, 30,000hrs rated lifespan
- Recessed / T-bar compatible; avail. with surface or hanging mount
- Ideal for replacing twin fluorescent battens in troffers/tile ceilings

LPL-A48-CW
(48W, 4300lm)

LPL-AH (hanging kit) \$8
LPL-AS (surface box) \$21



ENSA™

Automate lighting, add security and improve energy efficiency.

» Motion sensor & dusk/dawn switches and 240VAC receivers

Energy Saving Devices Dusk/Dawn | Motion Sensing | Mains Wireless Receiver

Remote control any 240VAC load.

ENSA™

2CH Mains Voltage 433.92MHz Receiver

- Remote control any 240VAC load up to 1000W
- 2 relay outputs (latched/timed), 100m RF range LoS
- Trigger via wireless alarm sensors, eg: PIR/reed switch
- Add up to 128 remotes or wireless alarm sensors
- IP55 weather/dust rated, sheltered mounting
- Includes 2 wireless remotes

ENSA-RS1

*sensors sold separately



Trigger via
wireless
sensors*



ENSA™

Intelligent Motion Sensor & Dusk/Dawn Switches

- | | | | | | | | | |
|-----------------|-----------------|-----------------|-----------------|---------------|--------------|-----------------|------------------|--------------|
| • 12m 180° | • 4m x 20m | • Ø6m 360° | • Ø20m 360° | • Ø8m 360° | • 15m 180° | • Ø16m 360° | • 2 ~ 100 Lux | • 5 ~ 50 Lux |
| • Wall mount | • Corridors | • Recessed | • Ceiling mount | • Concealed | • Wall mount | • Ceiling mount | • DIN rail/probe | • Wall clip |
| • PIR detection | • PIR detection | • PIR detection | • PIR detection | • Microwave | • Microwave | • Microwave | • Dusk/dawn | • Dusk/dawn |
| • IP65 rated | • IP20 rated | • IP20 rated | • IP65 rated | • Indoor only | • IP65 rated | • IP20 rated | • IP65 rated | • IP44 rated |

ENSA-PS1

ENSA-PS2

ENSA-PS3

ENSA-PS4

ENSA-MS1

ENSA-MS6

ENSA-MS2

ENSA-LC3

ENSA-LC1



100°
+90lm/W
>80 CRI

ENSA™

Pro Fixed Body Downlights

- Available in 20W, 36W and 48W models
- Samsung LEDs, superior build quality & heatsink
- In 3000K warm & 5500K cool white colour temp.
- Wide 100° beam angle & >80 colour rendering
- +90lm/W and 50,000 hours rated LED lifespan
- TRIAC dimmable and power factor >0.9
- Elegant white gimble and frosted LED diffuser
- Incl. LED driver & pre-terminated power plug

LEDDL20W3/5K6RD
(20W, 1835lm, Ø165mm hole)

LEDDL36W3/5K6RD
(36W, 3370lm, Ø165mm hole)

LEDDL48W3/5K8RD
(48W, 4600lm, Ø205mm hole)



60°
+85lm/W
>80 CRI

ENSA™

Pro Adjustable Round Downlights

- Available in 20W, 38W and 60W models
- Samsung LEDs, superior build quality & heatsink
- In 3000K warm & 5500K cool white colour temp.
- 60° beam angle & >80 colour rendering
- +85lm/W and 50,000 hours rated LED lifespan
- 350° rotatable with 60° tilt adjustment
- Elegant white gimble and frosted LED diffuser
- Incl. LED driver & pre-terminated power plug

LEDDL20W3/5KR
(20W, 1700lm, Ø165mm hole)

LEDDL38W3/5KR
(38W, 3220lm, Ø165mm hole)

LEDDL60W3/5KR
(60W, 6300lm, Ø230mm hole)



100°
+90lm/W
>80 CRI

ENSA™

Pro Adjustable Rectangular Downlights

- Available in 20W, 38W and 60W models
- Samsung LEDs, superior build quality & heatsink
- In 3000K warm & 5500K cool white colour temp.
- Wide 120° beam angle & >80 colour rendering
- +90lm/W and 50,000 hours rated LED lifespan
- 60° tilt adjustment, ideal for wall displays
- Elegant white gimble and frosted LED diffuser
- Incl. LED driver & pre-terminated power plug

LEDDL20W3/5KS
(20W, 1800lm, 227x130mm hole)

LEDDL38W3/5KS
(38W, 3750lm, 227x130mm hole)

LEDDL48W3/5KS
(48W, 4300lm, 227x130mm hole)

Commercial LED Downlights

 Fixed | Adjustable | Specialty | Dimmable

ENSA™

Adjustable Body Downlights

- Dimmable: 10W, 12W, 15W, 25W, 35W & 45W
- 3000K warm & 6000K cool white colour temp.
- Key lighting, focused beam angle 30° ~ 45°
- +70lm/W and 35,000 hours rated LED lifespan
- -20° ~ +20° lateral tilt, incl. driver & plug



LDL-BD10-AC/W
(10W, Ø75mm cut)

LDL-BD12-AC/W
(12W, Ø80mm cut)

LDL-BD15-AC/W
(15W, Ø90mm cut)

LDL-BD25-AC/W
(25W, Ø110mm cut)

LDL-BD35-AC/W
(35W, Ø145mm cut)

LDL-BD45-AC/W
(45W, Ø160mm cut)

ENSA™

Specialty Adjustable Body Downlights

- Dimmable 10W & 12W standard & deep recessed styles
- 3000K warm & 6000K cool white colour temperatures
- Deep recess hides LED array/glare in circle or ellipse hole
- +65lm/W and 35,000 hours rated LED lifespan
- -20° ~ +20° lateral tilt, incl. driver & plug



20° Beam
Recessed
Ellipse

LDL-BC10-AC1/W1
(10W, Ø80mm cut)

20° Beam
Recessed
Circle

LDL-BC10-AC2/W2
(10W, Ø80mm cut)

60° Beam
Standard
65lm/W

LDL-BC12-AC/W
(12W, Ø80mm cut)

ENSA™

Fixed Body Downlights

- Available in dimmable 9W, 15W, 20W & 30W models
- 3000K warm & 6000K cool white colour temperatures
- 95° (9W), 36° (15W), 75° (20W), 108° (30W) beam angles
- +70lm/W and 35,000 hours rated LED lifespan



LDL-BD9-FC/W
(9W, Ø95mm cut)

LDL-BD15-FC/W
(15W, Ø120mm cut)

LDL-BD20-FC/W
(20W, Ø165mm cut)

LDL-BD30-FC/W
(30W, Ø195mm cut)

Residential LED Downlights Ultra Thin | Surface Mount | Ø90mm | Spot Lights



Only
15mm
Depth

ENSA™

Thin LED Downlight

- In 12W, 18W & 24W lights
- 110° beam angle, >80 CRI
- 70lm/W, 35,000hrs lifespan
- 3000K/6000K warm/cool
- Driver incl., non-dimmable
- 155/205/280mm hole-cut

LDL-DT12 / 18 / 24-C/W
(12W / 18W / 24W, cool/warm)



ENSA™

Surface LED Downlight

- 12W model, surface mount
- 110° beam angle, >80 CRI
- 70lm/W, 35,000hrs lifespan
- 3000K/6000K warm/cool
- Driver incl., non-dimmable
- U-bracket, Ø170mm

LDL-DS12-C/W
(12W, cool/warm)



ENSA™

10W LED Downlight

- 10W, Ø90mm hole cut
- 120° beam angle, >80 CRI
- 80lm/W, 35,000hrs lifespan
- 3000K/6000K warm/cool
- Integrated dimmable driver
- Frosted diffuser, flat face

LDL-BB10-FC2/W2
(10W, cool/warm)



ENSA™

10W LED Downlight

- 10W, Ø75mm hole cut
- 120° beam angle, >80 CRI
- 70lm/W, 35,000hrs lifespan
- 3000K/6000K warm/cool
- External dimmable driver
- Frosted diffuser, bevel face

LDL-BB10-FC/W
(10W, cool/warm)



ENSA™

LED Downlights

- 12/13W, Ø90mm hole cut
- 100° beam angle, >80 CRI
- 80lm/W, 35,000hrs lifespan
- 3000K/6000K/multicolour
- Colour changes on light switch action

LDL-BB12-FC/W LDL-BB13-FM
(12W, cool/warm) (13W, multicolour)

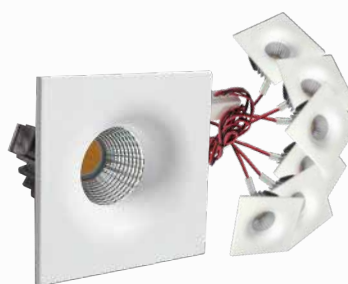


ENSA™

Dimmable Round LED Spots

- 6 x 3W spot light (18W total)
- 45° beam angle, 200lm light output
- Ø28mm hole cut size per light
- 3000K warm & 6000K cool white

LDL-BA3-FC1 (cool)
LDL-BA3-FW1 (warm)



ENSA™

LDL-BA3-FC2 (cool)
LDL-BA3-FW2 (warm)

\$59

Retrofit LED Lighting Tube Lights | Globes | MR16 Downlights

ENSA™

T8 Standard LED Tubes

- In 2ft (600mm), 4ft (1200mm) & 5ft (1500mm) models
- 100+lm/W efficacy, LED lifespan up to 30,000 hours
- Light weight, safe, full polycarbonate tube design
- Frosted diffuser for soft light eliminates LED glare
- Single ended AC input, incl. LED starter

LTU-A9-CW
(9W, 900lm)

LTU-A18-CW
(18W, 1800lm)

LTU-A22-CW
(22W, 2200lm)



100lm/W
2ft, 4ft, 5ft
Retrofit

ENSA™

T8 Motion Sensor LED Tubes

- Compound energy savings with LED sensor tubes
- Available in 2ft (600mm) and 4ft (1200mm) models
- 80+lm/W efficacy, LED lifespan up to 50,000 hours
- 8m radius PIR sensor, 120° beam angle, >80 CRI
- Light features 60 sec on-time delay after last detected motion, then dims to 30% brightness
- Single ended AC input, incl. LED starter

LTU-C9-CS
(9W, 750lm)

LTU-C18-CS
(18W, 1800lm)



2ft & 4ft
Microwave
30% Dim



ENSA™

LED Light Globes & MR16 Bulbs

Variety of base fixtures, in warm (3000K) and cool (6500K) white, +80lm/W, non-dimmable.

E27 Screw Base

LEDL6WE27 (6W)

LBL-C9-E27 (9W)

LEDL11WE27 (11W)

B22 Bayonet Base

LEDL6WB22 (6W)

LBL-D7-B22C (7W)

LEDL9WB22 (9W)

LEDL11WB22 (11W)

GU10 Bayonet Base

LEDGL5WGU (5W)

GU5.3 Bi-Pin Base

LEDGL5WMR (5W)

Install solar surveillance and lighting in almost any location.

» With WiFi & 4G connectivity and high-capacity lithium batteries

Solar Systems Motion Sensing Area Lights | Off-grid Surveillance Systems | Remote View



Solar Surveillance & Lighting Systems

- Next generation solar CCTV/lighting systems
- Fully configured and ready for installation
- Install solar lighting, CCTV or dual system
- Multiple network camera options possible
- 120W / 180W monocrystalline silicon panel
- 500Wh / 1200Wh lithium battery (LiFePO₄)
- 180lm/W motion sensing LED area light
- Local remote view via 5GHz wireless
- National remote view via 3G/4G
- Optional bird spike strip included
- Ø60mm diameter pole mount

*Pole/base, SIM card sold separately, coverage is carrier dependent.



Solar Area Lighting Systems

In 120W or 180W panel options, with 50W / 60W LED street light

SSL-B50MN
(120W Panel)

SSL-B60MN
(180W Panel)

Solar Surveillance Systems

In 120W or 180W panel, with 4.0MP mini PTZ dome & 50 / 60W LED street light

SLR-B120-G/W
(120W Panel, 4G/WiFi)

SLR-B180-G/W
(180W Panel, 4G/WiFi)

It is our mission to support & inspire your installation business.

With the best brands in CCTV, alarms, access control and LED lighting.



Over 40 Years | Since 1978

Contact us, shop online or visit our Sydney branches:

(02) 9671 6711 | sales@rhino.com.au | www.rhino.com.au

McGraths Hill

Head Office & Distribution
9 Hannabus Place
McGraths Hill, NSW 2756

Haberfield

Showroom & Sales Office
223-225 Ramsay Street
Haberfield, NSW 2045

Villawood

Showroom & Sales Office
63-69 Middleton Road
Villawood, NSW 2163

Exclusive Trade Only Specials. Offers valid until 30th June 2019, while stocks last, trade customers only. Pricing & product availability may be subject to change without notice; all prices in AUD & exclude GST. Some offers may commence or extend beyond the promotional period. Errors & omissions excepted.