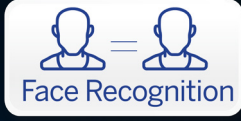




AI People & Vehicle Detection



AI Smart Dual Light



Face Recognition



AI Scene Adaptive

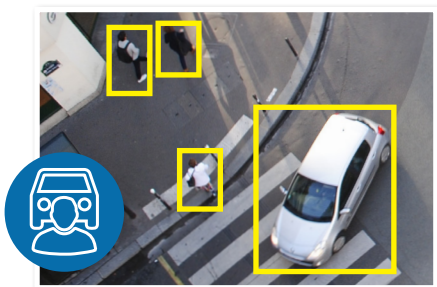


Superb AI surveillance kits.

Watchguard G-Series: 6.0MP AI surveillance kits, in 4, 8 and 16 channels.

Watchguard™ G Series AI CCTV kits are high performance AI surveillance systems ideal for home & small business, available at an affordable price. These kits combine AI cameras & recorders to deliver the best in AI functions including human/vehicle detection, face recognition & quick searching via AI events. The latest range includes AI Smart Dual Light cameras to turn every camera into an AI security light. The camera operates as normal at night in discreet infrared illumination mode, until it detects an AI Human/Vehicle event, trigger a white LED spotlight to capture colour footage and deter trespassers or intruders.

- Records up to 6.0MP (3288 x 1850 pixels) at 25fps
- Up to 30m infrared range; true day/night (auto ICR)
- AI human & vehicle detection via motion or IVS rules
- AI face recognition with allowlist & blacklist functions
- Optimal image enhancement via AI scene adaptive
- Built-in Power over Ethernet (PoE) for easy installation
- Remote view for iOS, Android & Windows devices
- IP67 weather rated, full metal camera housing



AI Human & Vehicle Detection



AI Face Detection & Recognition



Quick Search via AI Event

Kits that scale to your requirements.

The Watchguard™ G Series is available in 4, 8 and 16 channel packages. They include security cameras (with the option to add cameras (8/16 only) and a video recorder.

Kit Model	NVRKIT-G460-4C	NVRKIT-G860-6C	NVRKIT-G1660-10C
Kit Image			
Network Video Recorder	NVR4COM-I with 4 Port PoE & 1 x SATA Bay	NVR8COM-I with 8 Port PoE & SATA Bay	NVR16COM-I with 16 Port PoE & 2 x SATA Bay
Included Cameras	4x VSIPP-6DIRG-I3 Smart Dual Light Turret	6x VSIPP-6DIRG-I3 Smart Dual Light Turret	10x VSIPP-6DIRG-I3 Smart Dual Light Turret
Included Accessories	1 x 1.5m CAT5 patch cable for networking / 1 x 1m HDMI output cable / 1 x Mouse <i>*Camera cabling sold separately*</i>		

Kit Specifications

For full specifications and bracket compatibility, please refer to individual product web entries or datasheets.

NVR Model	NVR4COM-I	NVR8COM-I	NVR16COM-I
Product Image			
Video Input	4 channel	8 channel	16 channel
Video Output	1 x HDMI, 1 x VGA		
Recording Resolution	Configurable from 16.0MP (4910 x 3264) to CIF (352 x 288)		
Incoming Bandwidth	80Mbps (incoming/recording/outgoing)	256Mbps (incoming/recording/outgoing)	256Mbps (incoming/recording/outgoing)
Video Compression	Video: Smart H.265+ / H.265 / H.264 / H.264+ / MJPEG		
Power Consumption	<10W (without HDD) / PoE: Max 25.5W for single port, 36W total	<10W (without HDD) / PoE: Max 25.5W for single port, 72W total	<10W (without HDD) / PoE: Max 25.5W for single port, 130W total
PoE	4 ports (IEEE 802.3 af/at)	8 ports (IEEE 802.3 af/at)	16 ports (IEEE 802.3 af/at)
Remote View	iOS (iPhone, iPad) / Android devices / Windows Phone* (limited functionality)		
Internal HDD	1 x SATA port up to 10TB max, 10TB HDD Capacity	1 x SATA port up to 10TB max, 10TB HDD Capacity	2 x SATA port up to 10TB max, 20TB HDD Capacity

Camera Model	VSIPP-6DIRG-I3
Product Image	
Image Sensor	1/2.7" 6.0MP Progressive Scan CMOS
Lens	2.8mm F2.0 Fixed Lens, Horizontal: 105°, Vertical: 56°; Horizontal: 97°, Vertical: 71°, Diagonal: 129°
Lighting Compensation	BLC / HLC / WDR (120dB)
Resolution	6.0MP (3288 x 1850) to CIF (352 x 288)
Infrared Range	2 x Infrared LED + 2 x White Light LED, 30m range, AI Event Detection Control, Auto/manual on/off control
Frame Rate	Main Stream: 6.0MP (1 ~ 25fps), Sub Stream: D1 (1 ~ 25fps), Third Stream: 1080p (1 ~ 25fps)
Smart Functions	AI People & Vehicle Detection (Smart Motion Detection, Tripwire & Intrusion Area Rules), AI Quick Pick Function, AI Weather & Anti-flicker, AI Scene Self-adaption
Housing	Metal enclosure, IP67
Power Supply	12VDC / PoE (802.3af) (Class 0)

Your local Watchguard™ IP surveillance professional: