

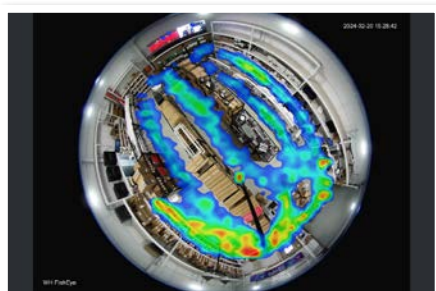


Complete 360° AI coverage.

Fisheye AI Series: 360° Fisheye IP Camera with AI people counting in 6.0MP

The Fisheye AI Series 360° dome performs the duties of multiple cameras, with the powerful benefit of AI-powered people counting and heat mapping functions. Receive real-time alerts when a certain number of people enter an area with AI people & area counting or set up heat map to observe the amount of time people spend in areas.

- Stream up to 6.0MP (2560 x 2560) at 25fps
- Circular fisheye lens with 360° viewing angle
- Fisheye front & back-dewarping modes
- Up to 15m infrared range; true day/night (auto ICR)
- Heat map, queue management & regions of interest
- AI-enhanced people counting/tracking for real-time alerts, statistics and business analytics
- IVS functionality including tripwire, intrusion & more
- MicroSD card slot for edge recording up to 1TB
- IP67 weather rated & IK10 vandal rated housing



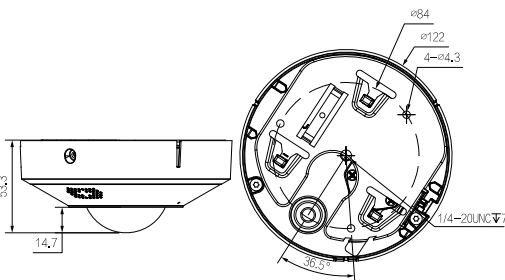
Heat Map Tracks Foot Traffic



Fisheye Image Dewarp Modes



AI-Enhanced People Counting

Specifications		6.0MP 360° Fisheye with AI People Counting		
Camera	Ordering Information		VSIPFE-6IR-I	
	Image Sensor		1/2.5" 6.0MP Progressive Scan CMOS	
	Effective Pixels		2560 (H) x 2560 (V)	
	RAM / ROM		4GB / 1GB	
	Min Illumination		0.006 Lux/F2.0 (Color), 0.0006 Lux/F2.0 (B/W), 0 lux (illuminator on)	
	S/N Ratio		>56dB	
	Infrared System		3 x Infrared LED, 15m range	
Lens	Lens / Iris		1.68mm F2.0 Fixed Focal Lens with Fixed Iris	
	Field of View		Horizontal: 185°, Vertical: 185°	
	Focus		0.3m Min. Focus Distance	
DORI	Detect (25px/m)		33.6m	
	Observe (63px/m)		13.4m	
	Recognise (125px/m)		6.7m	
	Identify (250px/m)		3.4m	
Video	Resolution		6.0MP (2560 x 2560) to UVGA (1600 x 1200)	
	Frame Rate	Main	6.0MP (1 ~ 25fps)	
		Sub	2.0MP (1 ~ 25fps)	
		Third	2.0MP (1 ~ 25fps)	
	Video Compression		H.265, H.264, H.264H, H.264B, AI H.265, AI H.264, MJPEG (Only supported by sub stream)	
	Bit Rate		H.265: 3 ~ 16384Kbps / H.264: 3 ~ 16384Kbps	
	Bit Rate Control		Constant bit rate (CBR) / Variable bit rate (VBR) / Adaptive bit rate (ABR)	
	Day/Night		Auto (ICR) / Color / B&W	
	Lighting Compensation		BLC / HLC / WDR (120dB)	
	Smart Scene Adaptive		Yes	
	White Balance		Auto / Natural / Street Lamp / Outdoor / Manual / Regional Custom	
	Gain Control		Auto / Manual	
	Noise Reduction		3D DNR	
	Dewarping Modes		Front-dewarp / Back-dewarp	
IVS	Display Modes		Original (no dewarp) / Panoramic / Virtual PTZ / Original + 3 split, + 4 split	
	Intelligent Functions		Intrusion, Tripwire, Motion Detection (4 zones), Region of Interest (4 zones), Privacy Masking (4 zones) Smart Infrared, Heat Map	
	People Counting		Area People Counting (Number of people, People quantity thresholds, 4 zones), Heat Mapping (Number of people and time spent)	
	Ethernet		RJ-45 (10/100Base-T)	
Network	Protocol		IPv4; IPv6; HTTP; HTTPS; TCP; UDP; ARP; RTP; RTSP; RTCP; RTMP; SMTP; FTP; SFTP; DHCP; DNS; DDNS; QoS; UPnP; NTP; Multicast; ICMP; IGMP; NFS; PPPoE; SNMP; P2P	
	Streaming Method		Multicast	
	Max. User Access		20 Users	
	Video Interface		N/A	
Interface	Audio Interface		1 Channel Input (RCA), 1 Built-in Mic / 1 Built-in Speaker / 1 Channel Output / Audio Compression: PCM, G.711A, G.711Mu, G726, AAC	
	Alarm Interface		1 Channel Input (5mA 3VDC ~ 5VDC) / 1 Channel Output (300mA 12VDC)	
	RS485		1 (baud rate range: 1200 bps~115200 bps)	
	Edge Storage		MicroSD Card (up to 1TB) / FTP / SFTP / NAS	
	Interoperability		ONVIF (Profile S / Profile G / Profile T), CGI	
	Power Supply		12VDC / PoE (802.3af)	
Environmental	Power Consumption		<1.4W (12VDC) / <8.1W (12VDC Max.) / <10.1W (PoE) / <8.8W (PoE Max.)	
	Operating Conditions		-10°C to +60°C, ≤95% RH	
	Ingress Protection		IP67	
	Vandal Resistance		IK10	
	Housing		Metal + Plastic	
	Pan/Tilt/Rotation		N/A	
	Dimensions		Ø122mm x 53.3mm	
	Net Weight		0.46kg	
Accessories			Junction Box	Ceiling Mount
			VSBKTA137	VSBKTB2212C or VSBKTA109 + VSBKTB220C
			Wall Mount	Pole Mount
			VSBKTB2204W	VSBKTA137 + VSBKTA152E

Your local VIP Vision™ IP solutions professional: