



Security Light



AcuPick search



AI Scene Adaptive



AI People & Vehicle Detection



Camera & security light in one.

Professional AI Series: Motorised AI bullet cameras in 4.0MP, 6.0MP & 8.0MP

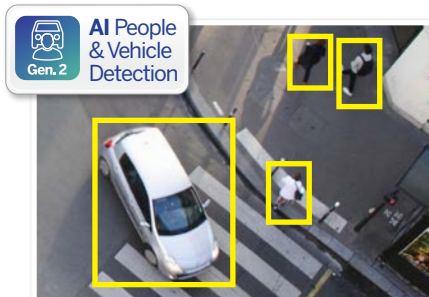
The Professional AI CCTV camera I3 range combines the latest in AI surveillance and a security light into one housing. During AI people and vehicle detection events, the camera will trigger a warm LED light to deter intruders and capture footage in full colour. Quickly search and track people & vehicles throughout entire sites across all Acupick CCTV cameras in your security system.

- Stream up to 8.0MP (3840 x 2160) at 25fps
- Up to 60m infrared range; true day/night (auto ICR)
- Intelligent search across all Acupick cameras
- Warm LED light triggers on person/vehicle detection
- H.265 encoding for efficient storage & streaming
- Back/highlight compensation & true WDR (120dB)
- MicroSD slot for recording at the edge up to 256GB
- AI weather and anti-flicker scene self-adaption
- Next-Gen Smart Motion Detection (SMD 4.0) & Perimeter Protection to prevent false alarms, using VIP Vision NVRs



4K
ULTRA HD

Record up to 4K in Real Time



AI People & Vehicle Detection
Gen.2

AI Human & Vehicle Detection

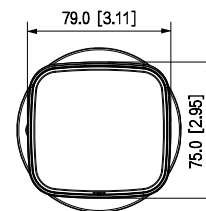
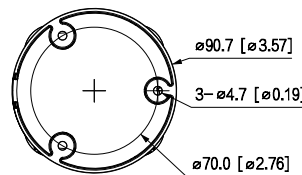
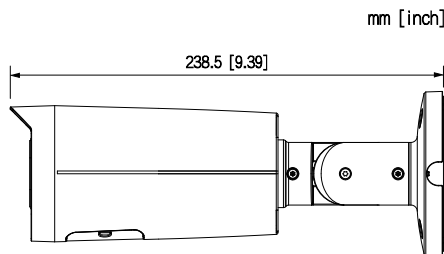


AcuPick Search

Intelligent people & vehicle search

| Specifications | | 4.0MP Motorised AI Bullet | 6.0MP Motorised AI Bullet | 8.0MP Motorised AI Bullet |
|------------------------------|---|---|---|---|
| Ordering Information | | VSIPP-4BIRMG-I3 | VSIPP-6BIRMG-I3 | VSIPP-8BIRMG-I3 |
| Camera | Image Sensor | 1/2.9" 4.0MP Progressive Scan CMOS | 1/2.7" 6.0MP Progressive Scan CMOS | 1/2.7" 8.0MP Progressive Scan CMOS |
| | Effective Pixels | 2688 (H) x 1520 (V) | 3288 (H) x 1850 (V) | 3840 (H) x 2160 (V) |
| | RAM / ROM | 1GB / 256MB | | |
| | Min Illumination | 0.005 Lux/F1.4 (Color), 0.0005 Lux/F1.4 (B/W), 0 lux (illuminator on) | 0.007 Lux/F1.4 (Color), 0.0007 Lux/F1.4 (B/W), 0 lux (illuminator on) | 0.007 Lux/F1.4 (Color), 0.0007 Lux/F1.4 (B/W), 0 lux (illuminator on) |
| | Illuminator | 4x warm LED light, 4x Infrared LED, 60m range, Auto/manual on/off control | | |
| | S/N Ratio | > 56dB | | |
| Lens | Lens / Iris | 2.7 ~ 13.5mm F1.4 Motorised Varifocal Lens with Fixed Iris | | |
| | Field of View | Horizontal: 104°~29°, Vertical: 54°~16° | Horizontal: 114°~32°, Vertical: 58°~17° | Horizontal: 114°~32°, Vertical: 58°~17° |
| | Focus | Auto Focus / 0.1m Min. Focus Distance | | |
| DORI | Detect (25px/m) | 64m (wide) / 210m (tele) | 85m (wide) / 280m (tele) | 85m (wide) / 280m (tele) |
| | Observe (63px/m) | 26m (wide) / 84m (tele) | 34m (wide) / 112m (tele) | 34m (wide) / 112m (tele) |
| | Recognise (125px/m) | 13m (wide) / 42m (tele) | 17m (wide) / 56m (tele) | 17m (wide) / 56m (tele) |
| | Identify (250px/m) | 6m (wide) / 21m (tele) | 8m (wide) / 28m (tele) | 8m (wide) / 29m (tele) |
| | Resolution | 4.0MP (2688 x 1520) to CIF (352 x 288) | 6.0MP (3288 x 1850) to CIF (352 x 288) | 8.0MP (3840 x 2160) to CIF (352 x 288) |
| Video | Frame Rate | Main: 4.0MP (1 ~ 25fps) | 6.0MP (1 ~ 25fps) | 8.0MP (1 ~ 25fps) |
| | | Sub: 1080p (1 ~ 25fps) | 1080p (1 ~ 25fps) | 1080p (1 ~ 25fps) |
| | | Third: 1080p (1 ~ 25fps) | 1080p (1 ~ 25fps) | 1080p (1 ~ 25fps) |
| Video Compression | H.265; H.264; H.264H; H.264B; MJPEG; Smart H.265+; Smart H.264+; AI H.265; AI H.264 | | | |
| Bit Rate | H.265: 3 ~ 16384Kbps / H.264: 3 ~ 16384Kbps | | | |
| Bit Rate Control | Constant bit rate (CBR) / Variable bit rate (VBR) | | | |
| Day/Night | Auto (ICR) / Color / B&W | | | |
| Lighting Compensation | BLC / HLC / WDR (120dB) / AI SSA | | | |
| White Balance | Auto / Natural / Street Lamp / Outdoor / Manual / Regional Custom | | | |
| Gain Control | Auto | | | |
| Noise Reduction | 3D DNR | | | |
| Picture Control | Mirror / Flip (0°, 90°, 180°, 270°) (support 90°/270° with 4.0MP and lower) | | | |
| Video Functions | Motion Detection (4 zones), Region of Interest (4 zones), Privacy Masking (8 zones), Smart Infrared | | | |
| IVS | AI Functions | Smart Motion Detection (SMD 4.0): People and vehicle detection using motion detection Perimeter Protection: People and vehicle detection using tripwire or intrusion rules Acupick: Search by people/vehicle attribute (e.g colour) and track their movements | | |
| | Intelligent Search | Search people or vehicle detection events (SMD 4.0, Perimeter Protection) | | |
| | Ethernet | RJ-45 (10/100Base-T) | | |
| Network | Protocol | IPv4; IPv6; HTTP; TCP; UDP; ARP; RTP; RTSP; RTCP; RTMP; SMTP; FTP; SFTP; DHCP; DNS; DDNS; QoS; UPnP; NTP; Multicast; ICMP; IGMP; NFS; SAMBA; PPPoE; SNMP; P2P | | |
| | Streaming Method | Multicast | | |
| | Max. User Access | 20 Users (Total bandwidth: 64MB) | | |
| | Video Interface | N/A | | |
| Interface | Audio Interface | 1 input (RCA Port) / 1 output (RCA Port) / Built-in MIC / Audio Compression - G.711a; G.711Mu; PCM; G.726; G.723 | | |
| | Alarm Interface | 1 channel in: 5mA 3-5VDC / 1 channel out: 300mA 12VDC | | |
| | Edge Storage | FTP / SFTP / NAS / MicroSD Card (up to 512GB) | | |
| | Interoperability | ONVIF / P2P / CGI | | |
| Environmental | Power Supply | 12VDC / PoE (802.3af) | | |
| | Power Consumption | Max: <9.3W (12VDC), 11.9W (PoE) | Max: <9.9W (12VDC), 12.5W (PoE) | Max: <9.9W (12VDC), 12.5W (PoE) |
| | Operating Conditions | -40°C ~ +60°C / ≤95% RH | | |
| | Ingress Protection | IP67 | | |
| | Housing | Metal | | |
| | Pan/Tilt/Rotation | Pan: 0° ~ 360°, Tilt: 0° ~ 90°, Rotation: 0° ~ 360° | | |
| Dimensions | 239mm x 79mm x 75mm | | | |
| Net Weight | 0.84kg | | | |

Application



| Junction Box | |
|--------------------------------------|------------------------|
| VSBKTA130E | VSBKTA135 |
| Pole Mount | Corner Mount |
| VSBKTA135 or VSBKTA130E + VSBKTA152E | VSBKTA130E + VSBKTA151 |

Your local VIP Vision™ IP solutions professional: