



Precise temperature capture.

Thermal body temperature scanning system for instant screening at checkpoints

Doubling as a surveillance system and thermal scanner, the Thermal Body Temperature System acts as a fast, reliable & precise screening method in high traffic areas. The thermal lens is fine-tuned for body temperature measurement, serving as an automatic alert system and activating a built-in alarm when high temperatures are detected.

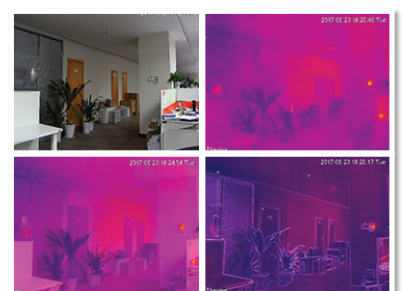
- Stream up to Full HD/1080p (1920 x 1080) at 25fps
- 2.0MP standard sensor & 4mm/8mm lens (84°/40°)
- One IP address/channel for thermal & visible images
- 35m infrared range, true WDR (120dB) & ultra DNR
- Superb low light capability in colour as low as 0.002lx
- Uncooled VOx thermal sensor (256x192 pixels)
- 3.5mm/7.1mm lens for thermal camera (50.6°/24°)
- Detects 8~14µm wavelength infrared spectral range
- Four IVS functions, audio I/O, IP67 rated body & PoE
- Includes blackbody for accurate detection ($\pm 0.3^{\circ}\text{C}$)



Precise Temperature Measurement



Built-in Alert System & Alarm Output



Adjustable Hybrid Image Modes

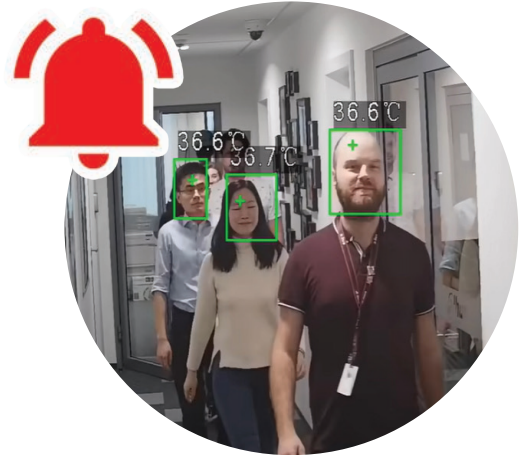
Features

Real-time alerts.

Alerts instantly activated when high temp. is detected

The can be used at key checkpoints as an automated temperature screening system, scanning entire crowds of people at once and alerting to high temperatures.

- Set temperature alerts ranging from 30°C to 45°C
- High temperature accuracy with $\pm 0.3^{\circ}\text{C}$ margin of error
- Built-in light & buzzer, with additional alarm outputs
- Temperature test covers up to 15 people simultaneously



Dual image capture.

Dual lens captures both visible & thermal images

This unique camera combines a thermal lens for heat monitoring and a visible lens with smart infrared, simultaneously capturing video and body temperature.

- **Visible lens:** 1920x1080 resolution (1080p), True WDR, Smart IR up to 35m, 4mm & 8mm lens options
- **Thermal lens:** 256x192 pixels, 8~14um spectral range, high thermal sensitivity, 18 colour palettes

Applications

The system can be used for body temperature screening in a variety of public & private settings (*indoor use only*).



Airports



Train Stations



Schools & Universities



Hospitals & Medical Facilities



Government Buildings



Kitchens & Food Preparation

System Map

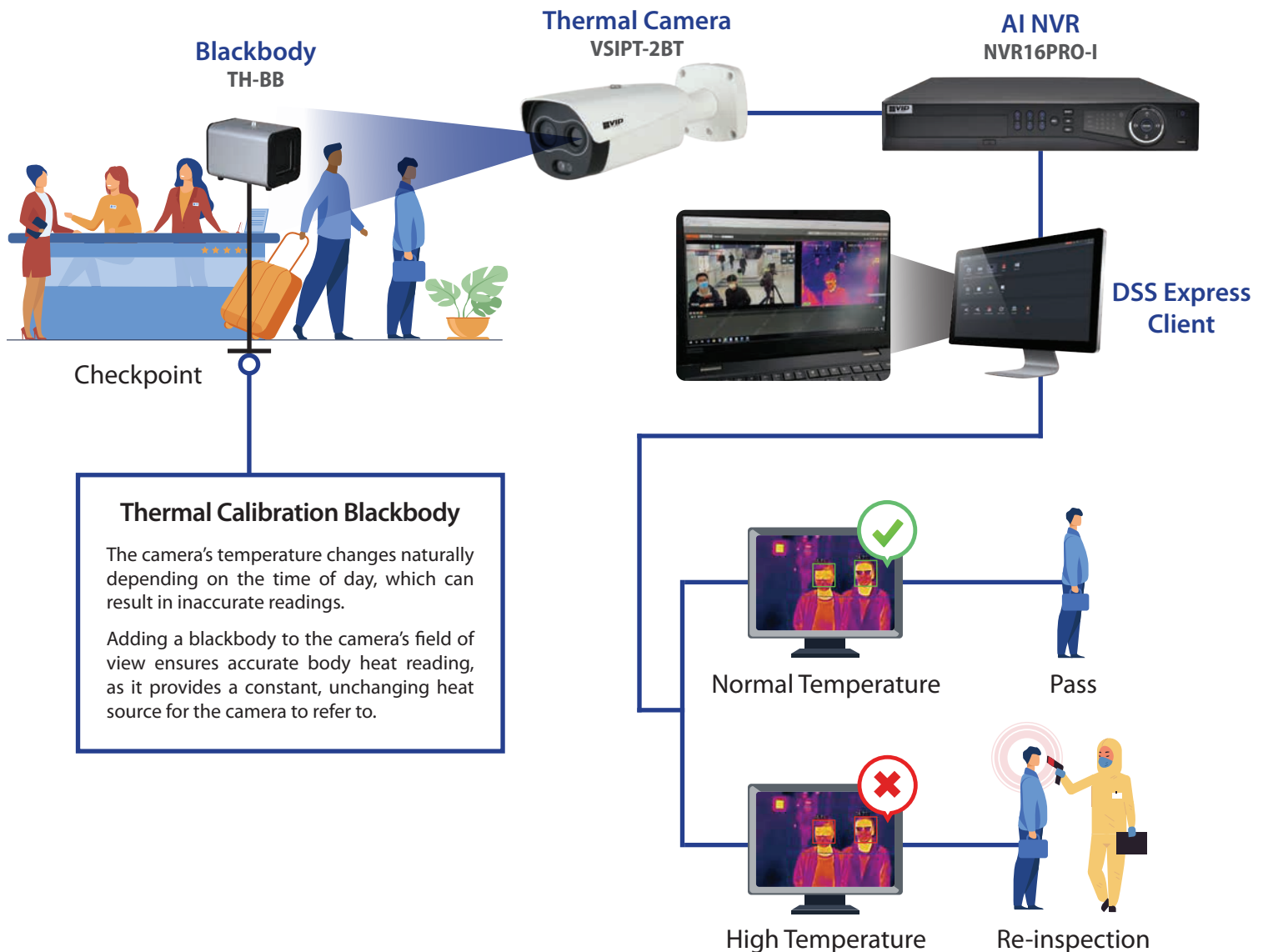
Below is an example system setup, using the thermal camera in a health inspection checkpoint. This system saves time and resources at checkpoints, preventing the need to manually inspect every person passing through.

The thermal camera at the checkpoint scans the temperature of every person passing through (with the blackbody unit set up to improve accuracy), and sends the data to the AI NVR. Visible & thermal video can be simultaneously viewed by a guard through the DSS Express client.

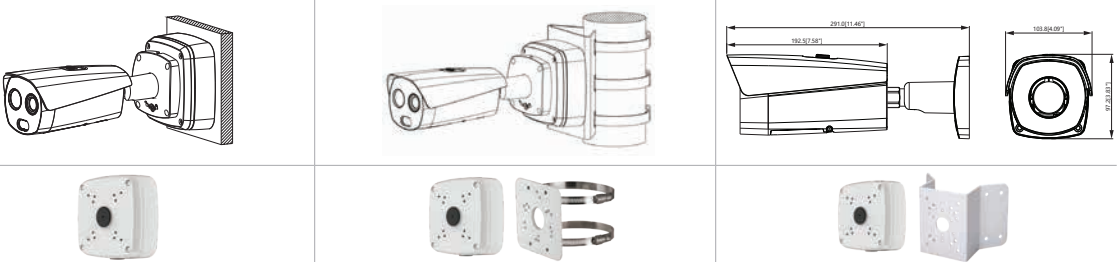
If someone with a high temperature is detected, an alert is sent to the DSS Express Client. That person can be manually re-inspected to confirm.



Example installation inside a train station



Specifications

Specifications		2.0MP Thermal Body Temperature Bullet		
Ordering Information		VSIPT-2BT: Standard		
Visible Light Camera		Thermal Camera		
Camera	Image Sensor	1/2.8" 2.0MP Progressive Scan CMOS		
	Effective Pixels	1920 (H) x 1080 (V)		
	Electronic Shutter Speed	512MB / 32MB		
	Min Illumination	0.002 Lux/F1.8 (Color), 0 Lux/F1.8 (IR on)		
	S/N Ratio	> 50dB		
Lens	Infrared System	1 x Infrared LED, 35m range, Auto/manual on/off control		
	Lens / Iris	4.0mm F2.0 / 8.0mm F1.9 Fixed Lens		
	Field of View	4.0mm 84° (H), 45° (V) / 8.0mm 40° (H), 22° (V)		
Video	Focus	Fixed		
	Resolution	1080p (1920 x 1080) to CIF (352 x 288)		
	Frame Rate	Main	Visible: 1080p to 720p (1 ~ 25fps) / Thermal: 1280 x 960 to 720p (1 ~ 25fps)	
		Sub	Visible: D1 to CIF (1 ~ 25fps) / Thermal: 640 x 480 to 320 x 240 (1 ~ 25fps)	
		Third	N/A	
	Video Compression	H.264		
	Bit Rate	H.264: 640 ~ 8192Kbps		
	Bit Rate Control	Constant bit rate (CBR) / Variable bit rate (VBR)		
	Day/Night	Auto (ICR) / Color / B&W		
	Lighting Compensation	BLC / HLC / WDR (120dB)		
	White Balance	Auto / Natural / Street Lamp / Outdoor / Manual		
	Gain Control	Auto / Manual		
	Noise Reduction	Ultra 3D DNR		
	Picture Control	Mirror / Flip (180°)		
	IVS	Intelligent Functions	Motion Detection (4 zones), Region of Interest (4 zones), Privacy Masking (4 zones), Smart Infrared	
Measurement Range		30°C ~45°C		
Measurement Accuracy		Max ±0.3°C with Blackbody Unit, Max ±1°C without Blackbody Unit		
Measurement Mode		Spot / Line / Area		
Network	Measurement Rule	Spot: 12 / Line: 12 / Area: 12 / Supports 12 rules simultaneously		
	Ethernet	RJ-45 (10/100Base-T)		
	Protocol	IPv4/IPv6; HTTP; HTTPS; SSL; TCP/IP; UDP; UPnP; ICMP; IGMP; SNMP; RTSP; RTP; SMTP; NTP; DHCP; DNS; PPPOE; DDNS; FTP; IP Filter; QoS; Bonjour; 802.1x		
	Streaming Method	Unicast / Multicast		
Interface	Max. User Access	10 Users / 20 Users		
	Video Interface	1.0Vp-p/75Ω, PAL/NTSC (HDCVI Optional)		
	Audio Interface	1 Input, 1 Output / Compression: G.711a, G.711Mu, AAC		
	Alarm Interface	2 Input / 2 Output		
Environmental	RS485	Support		
	Edge Storage	MicroSD Card (up to 128GB) / NAS / Local PC		
	Interoperability	ONVIF Profile S & G / API		
	Power Supply	12VDC / PoE		
	Power Consumption	<12W		
	Operating Conditions	10° ~ 35° C / Less than 95% RH		
	Ingress Protection	IP67		
	Vandal Resistance	N/A		
	Housing	Metal		
	Pan/Tilt/Rotation	N/A		
Application	Dimensions	280mm x 104mm x 96mm (with bracket)		
	Net Weight	<1.40kg		
	Mounting Options & Diagram			
		Junction Box VSBKTA121		
		Pole Mount VSBKTA121 + VSBKTA152E		
Corner Mount VSBKTA121 + VSBKTA151				