



TRADE SPECIALS

Exclusive trade only specials: Only until 31st January 2019

Securing our planet is our responsibility: Join us!

With the best brands in CCTV, Alarms, Access Control & LED Security Lighting

4K and ready for installation.

Receive a free UPS with our new 4K HDCVI Kits

- **New:** Complete 8.0MP HDCVI surveillance kits
- **Available in 4, 8 and 16 channel kits with either fixed lens or motorised lens cameras**
- **Mix & match your choice of bullets/domes**
- Use with coaxial cable and 12VDC
- Up to 50m infrared; built in mic as standard
- Brand new user-friendly DVR interface

Prevent footage loss with Socomec UPS

Boost customer satisfaction & add value to your installs. Receive a **FREE** Socomec UPS with your purchase of 4K HDCVI CCTV Kits.



For more information, see page 2



Bulk Surveillance Specials



Latest in IP 4K surveillance



IP WiFi intercoms and kits



New Food Grade High Bay Lights



Contact us: (02) 9671 6711 • sales@rhino.com.au • www.rhino.com.au

- Industry leading **4 year warranty** offered on all professional products
- **Well known, unique & protected brands** to add value to your installs
- We **match or better competitor pricing** for directly comparable product
- Enjoy **free expert technical support** on the RhinoCo Technology range

Installation ready 4K CCTV

The latest Ultra HD surveillance HDCVI kits with free Socomec UPS giveaway



Prevent footage loss with Socomec UPS

Boost customer satisfaction & add value to your installations by integrating a Socomec uninterruptible power supply, **FREE** with your choice of 4K HDCVI surveillance kits.*

Deliver fast back up power & protect your CCTV installs against electrical surges, spikes & ESD damage:

FREE Socomec UPS offer:

- **650VA UPS** with 4 channel kits
- **850VA UPS** with 8 channel kits
- **1000VA UPS** with 16 channel kits

* Offer available only on 4K HDCVI kits shown page 3.
Only while stocks last, until 31/01/2019.



8.0MP HDCVI Kits: 4K HDCVI fixed & motorised lens kits available in 4, 8 and 16 channels.



Compact Series 8.0MP Fixed HDCVI Kits

- 4K HDCVI fixed lens surveillance packages with 4, 8 & 16 cameras
- Record 8.0MP (3840x2160) at 7fps with H.265+ video compression

Mix & match your choice of fixed lens cameras:

- 8.0MP 50m IR, 2.8mm lens (111°), built-in mic, IP67 metal domes
- 8.0MP 40m IR, 2.8mm lens (111°), built-in mic, IP67 metal bullets
- Seagate SkyHawk surveillance grade HDDs pre-installed
- Camera video/power cable & supplies sold separately



CVR4COMPACT2
(8CH DVR, 2TB HDD)



CVR8COMPACT2
(2TB HDD)



CVR16COMPACT2
(4TB HDD)



Compact Series 8.0MP Motorised HDCVI Kits

- 4K HDCVI fixed lens surveillance packages with 4, 8 & 16 cameras
- Record 8.0MP (3840x2160) at 7fps with H.265+ video compression

Mix & match your choice of motorised varifocal lens cameras:

- 8.0MP 60m IR, 3.7~11mm (112 ~ 46°), built-in mic, IP67 metal domes
- 8.0MP 80m IR, 3.7~11mm (112 ~ 46°), built-in mic, IP67 metal bullets
- Seagate SkyHawk surveillance grade HDDs pre-installed
- Camera video/power cable & supplies sold separately



CVR4COMPACT2-VF
(8CH DVR, 2TB HDD)



CVR8COMPACT2-VF
(2TB HDD)



CVR16COMPACT2-VF
(4TB HDD)



Enjoy even greater savings when you buy in bulk!



2.0MP HDCVI Bullet

- 2.0MP, 3.6mm fixed lens (90°), 40m IR, true WDR, dual HDCVI & composite video outputs, IP67 rated, metal body

VSCVI2MPFBIRV4
(2.0MP 3.6mm)



4.0MP HDCVI Bullet

- 4.0MP, 3.6mm (79°), 40m IR, true WDR, dual HDCVI & composite video outputs, IP67 rated, metal body

VSCVI4MPFBIR
(4.0MP, 3.6mm)



8.0MP HDCVI Bullet

- 8.0MP, 2.8mm fixed lens (111°), 40m IR, 1/2" sensor; 0.005lx low light colour, true WDR, built-in mic, IP67, 12VDC, HD/SD switchable

VSCVI-8BIRG
(8.0MP 2.8mm)



8.0MP HDCVI PIR Bullet

- 8.0MP, 2.8mm fixed lens (111°), 20m IR, 1/2" sensor; 0.005lx low light colour, true WDR, IP67, 12VDC, PIR motion detection, HD/SD switch.

VSCVI-8BIRP
(8.0MP 2.8mm)



SECURVIEW
VICTORY SERIES

2.0MP HDCVI IK10 Dome

- 2.0MP, 3.6mm fixed lens (87°), 30m IR, 0.005lx low light colour, true WDR, HD/SD switchable, IP67/IK10 rated body

VSCVI2MPVDIRV3
(2.0MP 3.6mm)



SECURVIEW
VICTORY SERIES

4.0MP HDCVI IK10 Dome

- 4.0MP, 2.8mm fixed lens (100°), 30m IR, true WDR, HDCVI & composite outputs, IP67/IK10 rated body

VSCVI4MPVDIR2.8
(4.0MP 2.8mm)



SECURVIEW
VICTORY SERIES

4.0MP HDCVI Turret Dome

- 4.0MP, 2.8mm (100°) & 3.6mm (79°), 50m IR, true WDR, dual HDCVI & composite video outputs, IP67 rated, metal body

VSCVI4MPDIR / 2.8
(4.0MP in 2.8, 3.6mm)



SECURVIEW
VICTORY SERIES

8.0MP HDCVI Turret Dome

- 8.0MP, 2.8mm fixed lens (111°), 50m IR, 1/2" sensor; 0.005lx low light colour, true WDR, built-in mic, IP67, 12VDC, HD/SD switchable

VSCVI-8DIRG
(8.0MP 2.8mm)



STOCK UP AND SAVE

with our bulk-buy HDCVI & IP deals!



2.0MP IP IK10 Bullet

- 2.0MP@50fps, 3.6mm lens (87°), 60m IR, IVS incl. face detect, true WDR, microSD, ePoE, alarm I/O, audio I/O, IP67/IK10



6.0MP IP IK10 Bullet

- 6.0MP@20fps, 28mm lens (98°), 60m IR, IVS incl. face detect, true WDR, microSD, ePoE, alarm I/O, audio I/O, IP67/IK10



4.0MP IP Wedge Dome

- 4.0MP@25fps, 2.8mm (104°), 3.6mm (87°), 6.0mm (57°), 20m IR, IVS incl. face detect, true WDR, microSD, built-in mic, IP67/IK10

VSIPE2MPFBMINIIR
(2.0MP 3.6mm)



VSIPE6MPFBMINIIR
(6.0MP 2.8mm)



VSIP4MPVDIRFV2
(4.0MP in 2.8, 3.6, 6.0mm)



2.0MP IP Turret Dome

- 2.0MP@50fps, 2.8mm (104°), 3.6mm (87°), 50m IR, IVS incl. face detect, true WDR, built-in mic, microSD, ePoE, IP67



4.0MP IP Turret Dome

- 4.0MP@25fps, 2.8mm (104°), 3.6mm (87°), 50m IR, IVS incl. face detect, true WDR, built-in mic, microSD, ePoE, IP67



6.0MP IP Turret Dome

- 6.0MP@20fps, 2.8mm (98°), 3.6mm lens (69°), 50m IR, IVS incl. face detect, true WDR, built-in mic, microSD, ePoE, IP67



2.0MP IP Auto Track PTZ

- 2.0MP@50fps, 25x zoom, 4.8 ~ 120mm (59~2.4°), 150m IR, IVS incl. face detect, true WDR, microSD, IP67, audio/alarm I/O, 360° panning

VSIPE2MPVDMINIIRCB
(2.0MP in 2.8, 3.6mm)



VSIPE4MPVDMINIIRCB
(4.0MP in 2.8, 3.6mm)



VSIPE6MPVDMINIIRCB
(6.0MP in 2.8, 3.6mm)



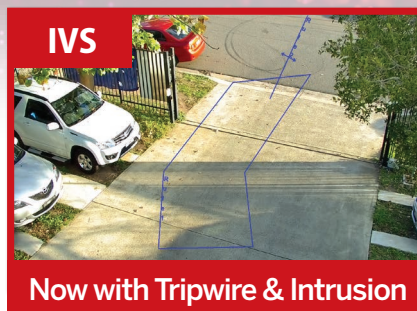
VSIP2MPPTZIRV2
(2.0MP, 12x zoom)





Incredible 4K performance

With the new range of Pro Motorised IP surveillance cameras from VIP Vision™



Pro 8.0MP Motorised IP Bullet

- Stream up to 8.0MP/4K (3840 x 2160) at 25fps
- Huge 1/2" sensor for incredible detail even at night
- Now with tripwire and intrusion IVS functionality
- 3.7 ~ 11mm motorised varifocal lens (112°~46°), fixed iris
- H.265+ encoding for ultra-low bitrate transmission
- Impressive 0.004 Lux at F1.9 min. colour illumination
- 60m smart infrared and true WDR (120dB)
- MicroSD slot for edge recording up to 400GB
- IP67 rated metal housing

VSIP8MPFBIRMD
(8.0MP)



Pro 8.0MP Motorised IP Dome

- Stream up to 8.0MP/4K (3840 x 2160) at 25fps
- Huge 1/2" sensor for incredible detail even at night
- Now with tripwire and intrusion IVS functionality
- 3.7 ~ 11mm motorised varifocal lens (112°~46°), fixed iris
- H.265+ encoding for ultra-low bitrate transmission
- Impressive 0.004 Lux at F1.9 min. colour illumination
- 30m smart infrared and true WDR (120dB)
- MicroSD slot for edge recording up to 400GB
- IP67 & IK10 rated metal/polycarbonate housing

VSIP8MPVDIRMD
(8.0MP, IK10)



Bullet Junction Box
VSBKTA135



Dome Right Angle
VSBKTB203W

Professional Series : Get the perfect image every time with Pro motorised lens cameras.



4.0MP Motorised IP Dome

- Stream up to 4.0MP (2688 x 1520) at 20fps
- 2.7~13.5mm motorised lens (104~28°), fixed iris
- 50m IR, true WDR (120dB), MicroSD, IP67 rated

VVIP4MPVDIRME
(4.0MP)



4.0MP Motorised IK10 IP Dome

- Stream up to 4.0MP (2688 x 1520) at 20fps
- 2.7~13.5mm motorised lens (104~28°), fixed iris
- 30m IR, true WDR (120dB), MicroSD, IP67/IK10

VVIP4MPVDIRMD
(4.0MP, IK10 rated)



4.0MP Motorised IP Bullet

- Stream 4.0MP (2688 x 1520) at 20fps
- 2.7~13.5mm motorised lens (104~28°), fixed iris
- 60m IR, true WDR (120dB), MicroSD IP67 rated

VVIP4MPFBIRMD
(4.0MP)

Ultimate Series: The best in functionality plus extended zoom & built-in heater models.



8.0MP Ultimate IP Bullets

- Stream 8.0MP (3840 x 2160) 15fps
- 2.7 ~ 12mm motorised varifocal lens with DC auto iris (102°~39°)
- 50m smart infrared (-Z 100m)
- 8 smart video analytic functions
- H.265, true WDR, microSD, alarm I/O, audio I/O, video tester output, IP67, ePoE
- Also avail. in 7~35mm lens (38°~14°) (-Z)
- Also avail. in heater model (H)

VVIP8MPFBIRM
(2.7~12mm lens)

VVIP8MPFBIRM-Z
(Zoom lens, 7~35mm)

VVIP8MPFBIRMH
(Heater, 2.7~12mm)



8.0MP Ultimate IP Vandal Domes

- Stream 8.0MP (3840 x 2160) 15fps
- 2.7 ~ 12mm motorised varifocal lens with DC auto iris (102°~39°)
- 50m smart infrared system (-Z 100m)
- 8 smart video analytic functions
- H.265, true WDR, microSD, alarm I/O, audio I/O, video tester out, IP67 & IK10 housing, ePoE
- Avail. in 7~35mm lens (38°~14°) (-Z)
- Also avail. in heater model (H)

VVIP8MPVDIRM
(IK10, 2.7~12mm)

VVIP8MPVDIRM-Z
(IK10, Zoom 7~35mm)

VVIP8MPVDIRMH
(Heater, IK10, 2.7~12mm)



6.0MP / 8.0MP Ultimate IP Domes

- Stream 8.0MP (3840 x 2160) 15fps
- Stream 6.0MP (3072 x 2048) 20fps
- 8.0MP: 2.7 ~ 12mm motorised lens (102°~39°)
- 6.0MP: 2.7 ~ 13.5mm motorised lens (91°~27°)
- Ultimate Series: DC auto iris as standard
- 50m smart IR, 8 smart video analytic functions
- H.265, true WDR (120dB), microSD, built in microphone, IP67 rated metal housing
- Extended PoE, up to 800m range

VVIP6MPVDIRMG
(6.0MP)

VVIP8MPVDIRMG
(8.0MP)



The best in specialty IP CCTV

With thermal cameras, ultra low light colour and beyond Ultra HD recording



2.0MP Hybrid Thermal IP Camera

- The ultimate in motion detection accuracy
- 2 fire detection modes & 4 IVS functions
- Two streams for visible light & thermal images
- PoE power, audio I/O and IP67 metal body

Visible Light Camera:

- Stream up to Full HD/2.0MP (1920 x 1080) at 25fps
- 2.0MP sensor, fixed 4mm lens (75° view angle)
- 35m infrared range, true WDR (120dB) & ultra DNR
- Superb low light capability in colour, up to 0.005lx

Thermal Camera:

- Uncooled VOx thermal sensor (160x120 pixels)
- 1mm fixed lens for thermal camera (56° view angle)
- Detects 7~14µm wavelength infrared spectrum
- Adjustable modes & alarm output for fire detection

VSIP2C2MPFB
(2.0MP)



2.0MP Ultra Low Light IP Cameras

- Huge 1/1.9" CMOS sensor for light capture
- 0.002 Lux at F1.53 min. colour illumination
- Image stabilisation & intelligent scene control
- Stream 2.0MP / 1080p (1920 x 1080) at 50fps
- 4.1 ~ 16.4mm motorised lens with DC auto iris
- 8 intelligent video functions, incl. face detection
- 50m smart infrared system & true WDR (120dB)
- H.265, microSD, alarm/audio I/O, tester output, IP67



12.0MP Ultimate Series IP Cameras

- Stream 12.0MP (4000 x 3000) at 20fps
- Stream 8.0MP / 4K (3840 x 2160) at 25fps
- Image stabilisation & intelligent scene control
- 4.1 ~ 16.4mm motorised lens with DC auto iris
- 105° ~ 35° adjustable. horizontal field of view
- 8 intelligent video functions, incl. face detection
- H.265, microSD, alarm & audio I/O, tester out, IP67
- 50m smart infrared system & digital WDR

Specialty IP Series: Impressive installs with PTZ, fisheye, pinhole & panoramic cameras



Auto Tracking 4.0MP IP PTZ

- Intelligent auto tracking on motion detect
- Electronic image stabilisation & analytics
- Stream up to 4.0MP (2592 x 1520) at 25fps
- Motorised 4.5~135mm (60~2.2°) 30x zoom
- 0.05lx@F1.6 low light colour performance
- Tripwire, face detection, intrusion, missing and abandoned object detection
- True WDR (400dB), microSD slot (128GB)
- Endless 360° pan, 15~90° tilt, 400°/s pan
- 1/1 audio and 2/1 alarm input/output
- IP66 weather rated, metal housing
- Supports power via PoE+ switch (802.3at)
- Includes. right angle mount & PSU

VSIP4MPPTZIR
(4.0MP, 30x zoom)



Auto Tracking IP Positioning Camera

- Intelligent auto tracking on motion detection
- Wide tilt range -90~90° and 360° panning
- Electronic image stabilisation & analytics
- Stream up to 2.0MP (1920 x 1080) at 50fps
- 4.8~120mm (59.2~2.4°) 25x zoom
- Ultra low-light colour: 0.005lx @ F1.6
- 150m LED infrared system & ultra DNR
- True WDR (120dB), microSD slot (400GB)
- Tripwire, face detect, heat map & more
- 1/1 audio and 2/1 alarm input/output
- Supports power via PoE+ switch (802.3at)
- IP67 weather & IK10 vandal rated metal body
- Extreme temperature capability: -40~70°C
- Incl. junction box, wall mount sold separately

VSIP2MPPTZIRW
(2.0MP, 25x zoom)



**Tracking
IP67 & IK10
Analytics**



VSIP12MPFEIRV2
(IK10/IP67, 12.0MP)

VSIP5MPFEV2
(5.0MP, IK08/IP67)



360° IP Fisheye Domes

- Available in 12.0MP and 5.0MP models
- Stream up to 12.0MP (4000 x 3000) at 25fps
- 5 image dewarp incl. ePTZ, panoramic and multiple split views; ceiling/wall/surface modes
- MicroSD slot, alarm & audio I/O, IK10 housing
- **12.0MP:** 1.98mm circular fisheye lens (360°), 10m 360° infrared, IP67/IK10, H.265, video analytics including face detection
- **5.0MP:** 1.42mm circular fisheye lens (360°), electronic day/night, H.265, IK08/IP67 only



1.0MP IP Pinhole Cam

- Stream 720p HD at 25fps (1280 x 720)
- 3.6mm fixed standard lens (77°)
- Electronic day/night, True WDR (120dB)
- Only 30x30x22mm

VSPINHOLE3.6
(1.0MP)



4.0MP Compact IP PTZ

- Stream 4.0MP at 25fps, 2.7~11mm motorised lens (112.5°~30°), microSD slot, true WDR (120dB)
- 355° panning, 0~90° tilt, video analytics
- Small Ø122mm footprint
- IP66/IK10 rated body

VSIP4MPPTZMINI
(IP66/IK10, 4.0MP)



2.0MP Surface Mount IP PTZ

- Stream 2.0MP at 25fps, 5.1~61mm motorised lens (59° ~ 5.2°), audio & alarm I/O, true WDR
- Endless 360° pan, -2 ~ 90° tilt adjustment
- Ultra low light colour at 0.005lx, MicroSD slot up to 400GB; IP66 & IK10 rated body

VSIP2MPPTZV2
(12x Zoom)



6.0MP Panoramic IP Bullet

- 3 x image sensor & lens panoramic system
- Stitched resolution 4096 x 832 (3.4MP)
- 180° horizontal & 44° vertical field of view
- H.265, MicroSD, true WDR (120dB), 30m IR
- Alarm & audio I/O; IP67/IK10 rated housing

VSIP6MPPA
(6.0MP, 3x sensors)

NETWORK CCTV SURVEILLANCE

Compact NVR Series: Ultra HD small form-factor NVRs, available in 4, 8 & 16 channels.



Compact Series NVRs

- Record up to Ultra HD/4K 8.0MP resolution (3840 x 2160)
- Built-in 4 / 8 / 16 port PoE switch, H.265 support
- QR code remote config, HDMI/VGA out, USB backup
- Temp. activated smart fan: Increases lifespan, reduces noise
- **4CH & 8CH:** 80Mbps, 1 x SATA up to 10TB
- **16CH:** 200Mbps, 2 x SATA up to 20TB, alarm I/O, 1 x RS232

NVR4COM2
(4CH, 1 HDD bay,
80Mbps)

NVR8COM2
(8CH, 1 HDD bay,
80Mbps)

NVR16COM2
(16CH, 2 HDD bay,
200Mbps)



Professional NVR Series: Ultra HD NVRs with optional PoE, in 4, 8, 16, 24 & 32 channels.



Professional 4CH NVR

- Records 8.0MP (3840 x 2160), up to 200Mbps
- Built-in 4 port PoE switch, H.265 support
- 2 x SATA up to 20TB, 1 x HDMI, 1 x VGA
- 4/2 Alarm I/O, QR code remote config.

NVR4PRO3
(4CH, 4 x PoE)



Professional 8CH NVR

- Records 12.0MP (4000 x 3000), up to 320Mbps
- Built-in 8 port PoE switch, H.265 support
- 2 x SATA up to 20TB, 1 x HDMI, 1 x VGA
- 4/2 Alarm I/O, QR code remote config

NVR8PRO7
(8CH, 8 x PoE)



Professional 16CH NVR

- Records 12.0MP (4000 x 3000), up to 320Mbps
- Built-in 16 port PoE switch, H.265+ support
- 4 x SATA up to 40TB, 2 x HDMI, VGA, eSATA
- 16/6 Alarm I/O, RS232/485, QR code config.

NVR16PRO7
(16CH, 16 x PoE)



Professional 24CH NVR

- Records 12.0MP (4000 x 3000), up to 320Mbps
- Built-in 24 port PoE switch, H.265 support
- 4 x SATA up to 40TB, 2 x HDMI, VGA, eSATA
- 16/6 Alarm I/O, RS232/485, QR code config.

NVR24PRO6
(24CH, 24 x PoE)



Professional 32CH NVR

- Records 12.0MP (4000 x 3000), up to 320Mbps
- Built-in 16 port PoE switch, H.265 support
- 4 x SATA up to 40TB, 2 x HDMI, VGA, eSATA
- 16/6 Alarm I/O, RS232/485, QR code config.

NVR32PRO16P3
(32CH, 16 x PoE)



Non-PoE NVRs in 16CH and 32CH

- Records 12.0MP (4000 x 3000), up to 320Mbps
- External PoE required, H.265 support, QR code
- Alarm I/O, HDMI/VGA, eSATA, RS232/485

NVR16PRO6NP
(16CH, 2 x SATA, 1 x RJ45)

NVR32PRONP2
(32CH, 4 x SATA, 2 x RJ45)

Off-grid CCTV and lighting

With solar LED lighting and CCTV surveillance from ENSA™ and VIP Vision™



**Avail. as
LED Light
or CCTV**



Standalone solar CCTV surveillance & lighting solutions with remote access via WiFi or 4G mobile internet.

Completely pre-configured surveillance systems with 4MP PTZ dome camera, 41.6Ah lithium battery and 75W monocrystalline solar panel. Solar lighting is available in 8W, 15W and 40W models with microwave or PIR motion sensing.

ENSA™

- Integrated 75W solar panel with 40W LED light
- 41.6Ah LiFePO4 battery & charge controllers
- 4.0MP PTZ dome CCTV surveillance assembly
- Pre-configured WiFi or 4G for remote view
- Ø60mm pole mount (pole and pole base not incl.)

Solar CCTV Kits

SLR-A75-4G
(4G Solar CCTV + 40W LED Light)

SLR-A75-4W
(WiFi Solar CCTV + 40W LED Light)

Standalone Solar Lights

SSL-A8PN
(8W Solar LED Motion Light)

SSL-A15MN
(15W Solar LED Motion Light)

SSL-A40MN
(40W Solar LED Motion Light)

Ultimate NVR Series: High functionality NVRs for large premises; 32, 64 & 128 channels.



Ultimate Series NVRs

- Record up to 12.0MP resolution (4000 x 3000), beyond 4K/Ultra HD
- 8 x SATA (32CH) and 16 x SATA (64/128CH); hot-spare/swap support
- 384Mbps incoming bandwidth to handle large number of inputs
- High performance surveillance with Intel® Core™ processors
- RAID profiles support for HDD optimisation and redundancy
- Live view in Ultra HD (3840 x 2160); multi-screen display support
- Alarm I/O with programmable relay outputs, RS232, RS485 and eSATA
- Gigabit interface: 2 x RJ45 ports (32CH); 4 x RJ45 & 2 x optical (64/128CH)

NVR32ULTNPV2
(32CH, No PoE)

NVR64ULTNPV2
(64CH, No PoE)

NVR128ULTNPV2
(128CH, No PoE)



HDCVI CCTV SURVEILLANCE

Professional HDCVI Series: Motorised HDCVI surveillance up to Ultra HD resolution.



Motorised Lens HDCVI Bullets

- Available in 2.0MP and 4.0MP
- Stream up to 4.0MP (2560 x 1440)
- 60m infrared and true WDR (120dB)
- 2 x video outputs: HDCVI & composite
- Up to 700m transmission (RG59 coax)
- IP67 weather resistant, metal housing
- Dual power support: 12VDC or 24VAC



VSCVI2MPFBIRMV3
(2.0MP, 99~37°)



VSCVI4MPFBIRM
(4.0MP, 98~26°)



Motorised Lens HDCVI Domes

- In 2.0MP and 4.0MP, in 2 dome styles
- Stream up to 4.0MP (2560 x 1440)
- Up to 60m infrared and true WDR (120dB)
- 2 x video outputs: HDCVI & composite
- Up to 700m transmission (RG59 coax)
- IP67 weather rated; IK10 model available
- Dual power support: 12VDC or 24VAC



VSCVI2MPVDIRMV4
(2.0MP, IK10)



VSCVI4MPVDIRM
(4.0MP, IK10)



VSCVI4MPVDIRME
(4.0MP, 98~26°)



Motorised 4K HDCVI Cameras

- In 8.0MP in dome and bullet models
- Stream up to 8.0MP (3840 x 2160)
- Huge 1/2" sensor for ultra low light 0.005lx
- Motorised lens 3.7~11mm, fixed iris
- Built-in microphone for audio recording
- Up to 60m infrared and true WDR (120dB)
- CVI/AHD/TVI/Analog DIP switch adjustable
- Up to 700m transmission (RG59 coax)
- IP67 rated metal housing; 12VDC only



VSCVI-8BIRMG
(8.0MP, 112~46°)



VSCVI-8DIRMG
(8.0MP, 112~46°)

Ultimate HDCVI Series: The best in HDCVI camera functionality & image performance.



Ultimate 8.0MP HDCVI Series

- Large 1/2" CMOS sensor for high resolution
- Stream Ultra HD / 8.0MP (3840 x 2160)
- 3.7~11mm motorised lens (112~46°), auto iris DC
- 2 x BNC video outputs: HDCVI & composite
- Infrared 100m (bullet) / 50m (dome), true WDR
- Audio interface & 2/1 alarm input/output
- Dual power support: 12VDC or 24VAC
- Up to 700m transmission (RG59 75-3 coax)
- On-camera zoom / focus adjustment
- IP67 rated metal housings; IK10 vandal dome



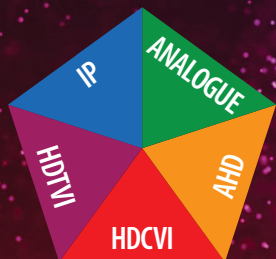
VSCVI8MPFBIRM
(Ultimate Series)



VSCVI8MPVDIRM
(Ultimate Series)

Achieve 20x image resolution

Compared to analogue with the latest 4K Compact & Pro Series HDCVI DVRs



Victory Synergy: The best in cross compatibility with IP, HDCVI, HDTVI, AHD and analogue input support

Now
H.265



Compact Series 8.0MP HDCVI DVRs

- In 8 or 16 channels with 2TB/4TB HDD installed (other options avail.)
- Record up to 4K / 8.0MP (3840 x 2160) at up to 7fps
- H.265 codec support for best efficiency 4K / 8.0MP video storage
- Victory Synergy: Support for IP, HDCVI, AHD, HDTVI, composite inputs
- Add IP inputs up to 8.0MP: 8CH +4 IP (48Mbps), 16CH +8 IP (96Mbps)
- HDMI, VGA, 2 x USB, RS485, IVS & smart search support, 12VDC

CVR8COM
(8CH, 8.0MP)

CVR8COM-2T
(8CH, 8.0MP)
With 2TB installed

CVR16COM
(16CH, 8.0MP)

CVR16COM-4T
(16CH, 8.0MP)
With 4TB installed

Pro Series HDCVI DVRs: Professional 4.0MP / 8.0MP HDCVI DVRs, in 4, 8 & 16 channels.



Professional 4.0MP 4CH DVR

- Records 4.0MP (2560 x 1440), up to 15fps
- 2 x SATA ports, max. 20TB HDD capacity
- 1x HDMI & 1x VGA simultaneous video output
- Support for HDCVI, Analogue and IP inputs

CVR4PRO2
(4CH, 4.0MP)



Professional 8.0MP 8CH DVR

- Records 8.0MP (3840x 2160), up to 7fps
- 2 x SATA ports, max. 20TB HDD capacity
- Victory Synergy: Support for IP, HDCVI, AHD, HDTVI, composite inputs

CVR8PRO2
(8CH, 8.0MP)



Professional 8.0MP 16CH DVR

- Records 8.0MP (3840x 2160), up to 7fps
- 2 x SATA ports, max. 20TB HDD capacity
- H.265+ high efficiency video compression
- Victory Synergy: Support for IP, HDCVI, AHD, HDTVI, composite inputs

CVR16PRO3
(16CH, 8.0MP)

Large scale coax upgrades

Securview™ 32 channel Pro Series & 16 channel Ultimate Series HDCVI DVRs



Professional 2.0MP 32CH HDCVI DVR

- Records 2.0MP (1920 x 1080) at 15fps across all channels
- 16 x HDCVI, HDTVI, AHD, analog input via BNC input
- 8 x SATA ports, max. 80TB HDD capacity; 2 x RJ45 ports
- 2x HDMI (up to 4K), 1x VGA video out; support HDMI spot
- Substitute BNC for up to 32 IP inputs 8.0MP/128Mbps
- 16CH support for tripwire & intrusion IVS functions
- 16 channel alarm input / 6 channel relay output
- 16 channel audio input / 1 audio out; 2-way talk



Ultimate 4.0MP 16CH HDCVI DVR

- Victory Synergy DVR with 8.0MP/4.0MP HDCVI support
- Records 8.0MP (channel 1 & 9 only), 4.0MP at 15fps
- 16 x HDCVI, HDTVI, AHD, analog input via BNC input
- Substitute BNC for up to 64 IP inputs 12.0MP/256Mbps
- 8 x SATA up to 80TB, eSATA, DVD burner (optional)
- 2 x HDMI (1 x up to 4K output), 1 x VGA, 1 x TV (BNC)
- 2 x RJ45, eSATA, RS485/232/422, 16/1 audio I/O
- 16 channel alarm input / 6 channel relay output
- Face detection, people counting & smart search

CVR32PRO3
(32CH, 2.0MP)

CVR16ULT
(16CH, 4.0MP)

Surveillance HDDs: Built for surveillance applications and optimised for 24/7 use cycles.



Seagate SkyHawk™ Surveillance HDDs

- **RhinoCo utilises surveillance grade hard disk drives in all surveillance systems and surveillance kits**
- Available in 1TB, 2TB, 3TB, 4TB, 6TB 8TB and 10TB models
- Optimised for DVRs & NVRs, SkyHawk™ surveillance drives are tuned for 24x7 workloads in capacities up to 10TB. Equipped with enhanced ImagePerfect™ firmware, SkyHawk helps to minimise dropped frames and downtime with a workload rating 3x that of a desktop drive.
- 180TB/year workload, support for up to 64 cameras per drive, low power consumption drives

HD1TBSV
(1TB)

HD2TBSV
(2TB)

HD3TBSV
(3TB)

HD4TBSV
(4TB)

HD6TBSV
(6TB)

HD8TBSV
(8TB)

HD10TBSV
(10TB)

Mobile HDCVI Surveillance: Wide range of Full HD HDCVI cameras and mobile recorders.



3m, 6m, 12m & 18m camera looms & VGA cables



4 & 8 Channel Mobile HDCVI DVRs

- Avail. in 4 or 8 channels, precision GPS standard, 4G/WiFi optional
- Support for HDCVI and analogue video inputs, 1 x VGA / 2 x TV outputs
- Backup via USB/network, lockable HDD/SIM tray, M12 camera inputs
- 7/2 alarm input/output, 6~36VDC power input, CAN bus support
- **4CH:** Records 2.0MP at 2CH + 1.0MP at 2CH at 25fps
- **8CH:** Records 2.0MP at 25fps across 8 channels
- 1 x 2.5" SATA port & SD card slot
- 2 x 2.5" SATA port & SD card slot



20m IR Ø62mm² Audio

Mini Dome

- Stream 2.0MP (1920x1080)
- 3.6mm lens (H: 83° view)
- Built-in mic & 20m infrared
- IP67 rated metal body
- Auto day/night (IR cut filter)
- Heavy duty M12 connector

VSCVI2MPDIRAT (Mini Dome)



20m IR Bumper Audio

Bumper Camera

- Stream 2.0MP (1920x1080)
- 3.6mm lens (H: 83° view)
- Built-in mic & 20m infrared
- IP67 rated metal body
- Auto day/night (IR cut filter)
- Heavy duty M12 connector

VSCVI2MPCIRAT (Bumper Cam)



3m IR Twin Cams Audio

Twin Dash Camera

- Twin 2.0MP cameras
- **Rear:** 2.1mm (139° view)
- **Front:** 2.8mm (116° view)
- Built-in mic & 3m infrared
- Auto day/night (electronic)
- Adhesive adjustable mount

VSCVI2MPWTT (Dash Camera)



20m IR 106° View IK10

IK10 Dome

- Stream 2.0MP (1920x1080)
- 2.8mm lens (H: 106° view)
- Built-in mic & 20m infrared
- IK10/IP67 rated body
- Auto day/night (IR cut filter)
- Heavy duty M12 connector

VSCVI2MPVDIRFTV2 (IK10 Dome)



Full HD 1080 20m IR 109° View Ø30mm

Barrel Camera

- Stream 2.0MP (1920x1080)
- 2.8mm lens (H: 109° view)
- Auto day/night (electronic)
- Heavy duty M12 connector
- IP67 rated metal body
- 30mm diameter hole

VSCVI2MPBT2.8 (Barrel Camera)



Total In-Vehicle Monitoring & GPS System

- 1080p in-vehicle camera with comprehensive GPS tracking
- Adjust/rotate camera orientation to suit different windscreens
- Date, timestamp, latitude/longitude & speed footage overlay
- Features backup battery for operation while engine is off
- Online device registration and account to manage devices
- Kit includes all components for install: power wiring harness, mounting cradle, 3M adhesive mount, SOS alarm button, backup battery, 12V 40A relay and relay cable, screwdriver



MDVR-J200 + 16GB micro SD (SIM card & phone not included)



*SIM & smartphone sold separately.



New & upgrade installations

With WiFi Series & 2-Wire Series residential IP intercoms from VIP Vision™



* Smartphone not included.



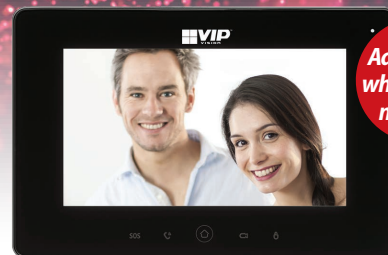
Connect via
WiFi or
Ethernet



Complete WiFi IP Intercom Kit

- WiFi support door station and intercom monitor for ease of installation
- Includes mounting bracket & connectors if cable installations is preferred
- Easily connect to existing networks; integrate multiple devices quickly
- Stylish & intuitive WiFi indoor intercom monitor, 7" capacitive touchscreen
- Up to 32GB storage via removable microSD slot on monitor

INTIPRKITD
(Door station, white
monitor & 30m CAT5)



Additional
white/black
monitor

INTIPMONDW/B
(IP intercom monitor w/ WiFi)

2-Wire Intercom Systems: Upgrade to IP intercoms using existing 2-wire infrastructure.

Includes
Rain Shield
Box



* Smartphone
not included.



INTIPRDSVW2W
(2-Wire Door Station)

INTIPMONFB2W
(2-Wire Monitor)



2-Wire Residential Intercom Systems

- Utilise existing 2-wire infrastructure to upgrade old intercoms or door bells
- 7" touch monitor & IK07 flush mount door station + 1.0MP low-light camera
- Add network controller: Connect to LAN/Internet for full system remote view, including live view, snapshots, remote unlock & more (PSU included)
- Integrates with most door strikes; 24V PSU included with network controller



INTIPNC2W
(Network Controller)

VIDEO INTERCOM SYSTEMS

Residential Systems: Create residential intercoms with WiFi, PoE & remote view/unlock.



1.0MP
WiFi/PoE
125° view



WiFi IP Door Station

- 1.0MP low-light door station camera with 2.2mm fixed lens (125° view)
- Connect to monitor easily via WiFi
- Power via PoE; Ethernet adapter incl.
- IP65 rated weather (front glass only)
- Surface mount; matte black ABS
- 2 x door relays, 2 x alarm, 1 x RS485
- NFC card reader; easy operation

INTIPRDSDB
(WiFi)



2.0MP
IP65/IK08
140° view



WiFi IP65 IP Door Station

- 2.0MP low-light door station camera with 1.9mm fixed lens (140° view)
- Connect to monitor easily via WiFi
- Power via PoE; Ethernet adapter incl.
- IP65 rated weather (front glass only)
- Surface mount; aluminium body
- 1 x door relays, 2 x alarm, 1 x RS485
- 2 x buttons; NFC card reader

INTIPDDS2
(WiFi, 2.0MP)



1.3MP
IK07/IP54
120° view



IK07 IP Door Station

- 1.3MP low-light door station camera with 2.8mm fixed lens (120° view)
- IP54/IK07 weather/vandal resistant
- Surface mount rain-shield box incl.
- Optional flush mount box avail.
- 2 x door relays, 2 x alarm, 1 x RS485
- Easy single button operation
- * Does not support WiFi

INTIPRDSVW
(Incl. rain shield box)



7" Panel
WiFi & PoE
Alarm I/O



WiFi Intercom Monitors

- 7" capacitive touchscreen intercom monitor (1024 x 600)
- Omni-directional microphone
- Connect easily via WiFi or Ethernet
- Elegant gloss finish in white with silver trim or black with gold trim
- 6 alarm inputs & 1 output, 1x RS485
- Power via PoE or 12VDC

INTIPMONDW (white)
INTIPMONDB (black)

Multi-tenant Series: Scalable, modular intercom systems for multi-dwelling buildings.



Multi-tenant IP Intercom Series

- System calls individual monitors, ideal in duplexes, hotels, etc.
- Build systems from 1~20 door stations & 1~100 monitors
- Camera master module supplies power to the slave modules
- Tailor systems with a range of intercom door station modules
- 1.0MP low-light door station camera with backlit name plate
- Access and configure modules through door station web interface
- Multiple button modules designed to fit a variety of applications
- Add multiple access options including keypad, card & biometric
- Compatible with residential monitors (INTIPMOND)
- Variety of surface and flush mount housing layouts



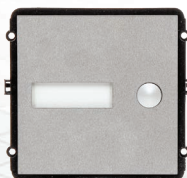
Add up to
100
Rooms

Unlock
a 2nd
Door

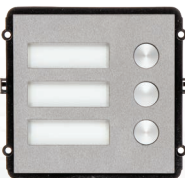
INTIPVDSC
(Camera Master Module)

Flush & surface
mount kits

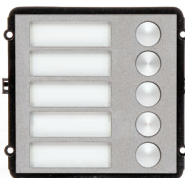
INTIPDM (RS485
Door Expander)



INTIPVDSB1
(1-button module)



INTIPVDSB
(3-button module)



INTIPVDSB5
(5-button module)



INTIPVDSK
(Keypad module)



INTIPVDSR
(Reader module)



INTIPVDSF
(Fingerprint module)



INTIPVDSN
(Blank module)

Network Essentials: PoE network switches, midspan/extenders, fibre & 4G accessories.



Fast Hi-PoE Switches (SWA Series)

- 8, 16 & 24 port 100M PoE switches with 1000M uplink
- PoE+ (30W) & Hi-PoE (60W) support; 250m PoE range
- 8 ports: Unmanaged switch, 8 x 100M PoE+ ports (1x Hi-PoE port), 2 x 1000M RJ45 uplink ports, 96W total power
- 16 port: L2 managed switch, 16 x 100M PoE+ ports (2 x Hi-PoE ports), 2 x 1000M RJ45 & 2 x 1000M SFP uplink ports, 240W total power
- 24 port: L2 managed switch, 24 x 100M PoE+ ports (2 x Hi-PoE ports), 2 x 1000M RJ45 & 2 x 1000M SFP uplink ports, 360W total power

VSPOE-SWA8G
(8 port, unmanaged)

VSPOE-SWA16
(16 port, L2 managed)

VSPOE-SWA24
(24 port, L2 managed)



Gigabit PoE Switches (SWB Series)

- 8, 16 & 24 port 1000M PoE switches with 1000M uplink
- PoE+ (30W) & Hi-PoE (60W) support
- 8 ports: Unmanaged switch, 8 x 1000M PoE+ ports (1x Hi-PoE port), 96W total power
- 16 port: L2 managed switch, 16 x 1000M PoE+ ports, 4 x 1000M SFP uplink ports, 250W total power
- 24 port: L2 managed switch, 24 x 1000M PoE+ ports, 4 x 1000M SFP uplink ports, 370W total power

VSPOE-SWB8G
(8 port, unmanaged)

VSPOE-SWB16G
(16 port, L2 managed)

VSPOE-SWB24G
(24 port, L2 managed)



8 Port PoE+ DIN Rail Switch

- 8 x 100M PoE+ ports
- 1 x 1000M RJ45 uplink port
- 1 x 1000M SFP fibre port
- Up to 100 metre PoE range
- Unmanaged PoE switch
- All ports: 30W, Total: 93W
- DIN rail mountable switch



VSPOE-SW8
(8 port, PoE+)



4 Port Extended PoE DIN Rail Switch

- 4 x 100M PoE+ ePoE ports
- 1 x 1000M RJ45 uplink port
- 1 x 1000M SFP fibre port
- Up to 800m PoE at 10Mbps, and 300m PoE at 100Mbps
- 1 x Hi-PoE (60W) & 3 x PoE+ ports (30W); 93W total power



VSPOE-SW4E
(4 port, ePoE)



9 Port Gigabit DIN Rail Switch

- 5 x 1000M RJ45 ports
- 4 x 1000M SFP fibre ports
- Layer 2 hardened, unmanaged switch
- ESD & lightning protection with -30 ~ 65° temperature range



VSETH-SW9GF
(9 port, non-PoE)



Extend
IP CCTV
300m



PoE Midspan & Extender

- Integrate Midspan & up to 3 Extenders to extend IP cameras up to 300m (≤ 8W per camera)
- Facilitates passive PoE power supply cascade
- 60W 10/100/1000M high power midspan for PTZs
- Add up to 3 x 10/100M extenders up to 300m
- Midspan wall mount, extender DIN rail kit incl.

VSPOE-MS
(Midspan)

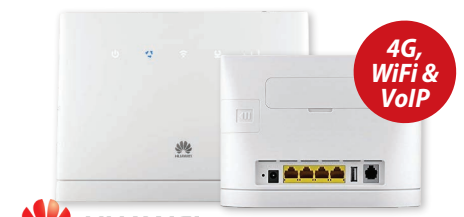
VSPOE-EX
(Extender)



Mini GBIC Multimode Fibre Adapter

- Mini GBIC/SFP adapter for Base-X SFP ports
- Multimode; compatible with OM1 & OM2 fibre
- Up to 550m transmission distance over OM2
- Transfer speeds of up to 1.25Gbps
- LC optical fibre connector
- Hot pluggable & optical power monitoring

SFPMM1
(Mini GBIC/SFP)



4G,
WiFi &
VoIP



4G Modem Router with WiFi

- Fast LTE CAT4 connections of up to 150Mbps*
- 4 x Gigabit (1000M) Ethernet ports for LAN/WAN
- 250m WiFi coverage, support for 32 devices
- 1 x USB printer/flash storage; 1 x RJ11 for VoIP
- 4G: FDD 700/900/1800/2100/2600; TDD 2300Mhz
- 3G UMTS B1/B8 1900/2100Mhz & GSM bands

VSWAN4GHW
(4G SIM not incl.)

Self Monitored Alarms: Wireless security solutions from the Watchguard 2020 Series.



**SMS
50 Sensors
Backup**

Watchguard 2020 3G SMS Wireless Alarm Pack

- Quick setup using the free app, store up to 5 phone numbers
- Receive alarm alerts in real time via SMS & phone call
- Expand up to 50 sensors using 2020 range below
- 12VDC power, 2 x 3.7V Li-ion backup battery (8hrs)
- Base kit includes alarm module, 1 x indoor PIR, 1 x reed switch, 2 x keyfobs and keypad tags

**ALC-PACK1
(SIM not incl.)**



**New Kit
Config.**

**WiFi
50 Sensors
Camera**

Watchguard 2020 WiFi Wireless Alarm Pack

- Rapid setup via app; features account system for easy user addition
- Receive alarm events & camera motion detection alerts in real-time via push notifications
- 12VDC power with 1 x 3.7V Li-ion backup battery
- Base kit includes alarm module, 1 x indoor PIR, 1 x reed switch and 2 x remote keyfob

**ALC-PACK4
(New Kit Config)**



Pet Immune PIR Sensor

- 8m / 110° detection scope
- 80m range line of sight
- Pet immune (25kgs)
- Indoor use only

ALC-PIR1



Compact Reed Switch

- Supervised wireless reed switch
- 80m transmission range
- Tamper protection
- 1 x AA battery power

ALC-RSW1



Roller Shutter Reed

- Heavy duty casing & antenna
- 80m transmission range LoS
- Tamper protection
- 2 x AAA battery power

ALC-RSW2



Watchguard 2020™ Wireless 720p WiFi Surveillance Camera

Model: ALC-CAM1

- Quick connect via QR code & WiFi
- Use with alarm app or standalone app
- 2-way audio & night vision
- Record footage to MicroSD

ALC-CAM1



360° Ceiling PIR Sensor

- Ø6m / 360° detection at 3.6m
- 80m range line of sight
- ABS plastic shell
- 2 x AA battery power

ALC-PIR2



Wireless Beam Sensor

- 4 x IR beam curtain up to 6m
- 80m range to alarm line of sight
- IP66 rated and UV resistant body
- 2 x CR123A (Tx), 3 x CR123A (Rx)

ALC-BEAM1



AC Indoor Siren

- Indoor siren & strobe (90dB)
- Plug-in AC power
- Use as night light or standalone alarm

ALC-SIR1



Outdoor Solar Siren

- Solar siren & strobe (110dB)
- Battery powered, rechargeable
- Built for external use

ALC-SIR2

ENSA™

Food-grade high bay lighting

Excellent energy efficiency with the LHB-F Series LED High Bays from ENSA™

Superb 135lm/W
light output

IP69K rated for
steam cleaning

Food Grade LED High Bay Lighting

LHB-F Series (UFO Style High Bay)

- Available in 100W, 150W or 200W models
- Incredible 135lm/W luminous efficacy, >80 CRI
- Exceptional 54,000hrs rated LED lifespan
- Compact design with IP69K weather rated body
- Available in 5700K cool white colour temperature
- 120° beam angle, metal eyelet and 3-pin AC plug
- Prismatic reflector available (sold separately)

LHB-F100-C/N
(100W, 13,000lm)

LHB-F150-C/N
(150W, 19,500lm)

LHB-F200-C/N
(200W, 26,000lm)



LED High Bays: Energy efficient industrial lighting for high ceiling areas up to 15m.

ENSA™

Professional LED High Bay Lighting

LHB-A Series (Traditional Style High Bay)

- In 120W or 200W, in standard or 0~10V driver*
- Accepted for use in NSW Energy Saving Scheme
- 50,000hrs rated LED lifespan, 6500K cool white
- Features customisable ambient light sensing, microwave motion detection & on-time delay

60° reflector,
eyelet, 3-pin
AC plug

Further
your energy
savings



LHB-A120-CW
(120W, 13,000lm)

LHB-A200-CW
(200W, 26,000lm)

ENSA-MS5
(Sensor switch)

ENSA™

Professional LED High Bay Lighting

LHB-C Series (UFO Style High Bay)

- Available in 100W, 150W or 200W models
- Incredible 130lm/W luminous efficacy, >80 CRI
- 50,000hrs rated LED lifespan, 5500K cool white
- Available in 5500K cool white colour temperature
- Interchangeable high bay lens (90°, 120°)

60° beam,
eyelet, 3-pin
AC plug

Compact
IP65 rated
body



LHB-C100-C
(100W 13,000lm)

LHB-C150-C
(150W 19,500lm)

LHB-C200-C
(200W 26,000lm)

LED Oyster Lighting: Smart oyster lighting in standard, sensor & emergency models.

ENSA™

Standard & Intelligent LED Oyster Lighting

- In standard, sensor, and sensor+battery backup models
- Models feature 120° beam angle & 30,000hrs rated lifespan
- Each model is available in cool & warm white colour temps.
- **Standard model:** 16W, 1200lm, no sensors or battery, features vandal and weather resistant IP66/IK10 body
- **Sensor model:** 16W, 1200lm, microwave motion sensor, on-time delay & daylight sensor, IP44 rated body
- **Sensor+Battery model:** 10W, 700lm, microwave motion sensor, on-time delay & daylight sensor, 1 x 7.2V 1800mAh NiMH battery, IP44 rated body



LED Tube Lighting: Standard and sensor LED tubes for easy upgrade light installations.

ENSA™

T8 Standard LED Tubes

- In 2ft (600mm), 4ft (1200mm) & 5ft (1500mm) models
- 100+lm/W efficacy, LED lifespan up to 50,000 hours
- Light weight, safe, full polycarbonate tube design
- Frosted diffuser for soft light eliminates LED glare
- Single ended AC input, incl. LED starter

LTU-A9-CW (9W, 900lm) LTU-A18-CW (18W, 1800lm) LTU-A22-CW (22W, 2200lm)



ENSA™

T8 Motion Sensor LED Tubes

- Compound energy savings with LED sensor tubes
- Available in 2ft (600mm) and 4ft (1200mm) models
- 80+lm/W efficacy, LED lifespan up to 50,000 hours
- 8m radius PIR sensor, 120° beam angle, >80 CRI
- Light features 60 sec on-time delay after last detected motion, then dims to 30% brightness
- Single ended AC input, incl. LED starter

LTU-C9-CS (9W, 750lm) LTU-C18-CS (18W, 1800lm)



Canopy Lighting: NSW ESS accepted lighting for garages, workshops & petrol stations.

ENSA™

Professional LED Canopy Lighting

- **Approved for use in the NSW Energy Saving Scheme**
- High efficiency +100lm/W, available in natural white 4500K
- 90° x 90° square beam angle for even light distribution
- 30,000 hours rated LED lifespan, <3% decay after 6,000hrs
- IP65 rated dust and weather resistant housing
- Canopy light includes kits for surface and recessed mounts:
Surface housing: 320 x 320mm footprint
Recessed housing: 400 x 400mm / Cutout: 320 x 320mm
- Ideal in garages, workshops & petrol stations

LCL-B150-N
(150W, 15500lm)



PROFESSIONAL LED LIGHTING

Panel Lighting: Re-energise office spaces with low glare panel lights in 48W.

ENSA™

1200 x 300mm Low Glare LED Panel Lighting

- Low Unified Glare Rating for high productivity work lighting
- Range is accepted for use in the NSW Energy Savings Scheme
- High efficiency 90lm/W, in 6000K cool white colour temperature
- Wide 110° beam angle, high >80 CRI, 30,000hrs rated lifespan
- Recessed / T-bar compatible; avail. with surface or hanging mount
- Ideal for replacing twin fluorescent battens in troffers/tile ceilings

LPL-A48-CW
(48W, 4300lm)



LPL-AH
(Hanging mount)

LPL-AS
(Surface mount)

LED Sensor Batten Lighting: IP65 weather rated battens in sensor & emergency models.

ENSA™

S2 Series: IP65 LED Battens

- Accepted for use in NSW Energy Saving Scheme
- In 18W (1600lm) & 36W (3000lm) models
- Light & microwave motion sensor control light
- Adjustable 2 stage dim (100% -> Dim -> Off)
- Wide 120° beam angle, 35,000hrs LED lifespan
- IP65 rated weather resistant enclosure

LEDBT18WS2
(18W, 600mm)

LEDBT36WS2
(36W, 1200mm)

ENSA™

SE Series: Emergency LED Battens

- Accepted for use in NSW Energy Saving Scheme
- In 18W (1600lm) & 36W (3000lm) models
- Light & microwave motion sensor control light
- 2hrs up-time backup battery, AS2293.3 app.
- Wide 120° beam angle, 35,000hrs LED lifespan
- IP65 rated, set on-time & motion sensitivity

LEDBT18WSE
(18W, 600mm)

LEDBT36WSE
(36W, 1200mm)



LED Energy Saving Switches: Motion & light sensor switches to further energy savings.

ENSA™



- 12m 180°
- Wall mount
- PIR detection
- IP65 rated

ENSA-PS1

- 4m x 20m
- Corridors
- PIR detection
- IP20 rated

ENSA-PS2

- Ø6m 360°
- Recessed
- PIR detection
- IP20 rated

ENSA-PS3

- Ø20m 360°
- Ceiling mount
- PIR detection
- IP65 rated

ENSA-PS4

- Ø8m 360°
- Concealed
- Microwave
- Indoor only

ENSA-MS1

- 15m 180°
- Wall mount
- Microwave
- IP65 rated

ENSA-MS6

- Ø16m 360°
- Ceiling mount
- Microwave
- IP20 rated

ENSA-MS2

- 2 ~ 100 Lux
- DIN rail/probe
- Dusk/dawn
- IP65 rated

ENSA-LC3

- 5 ~ 50 Lux
- Wall clip
- Dusk/dawn
- IP44 rated

ENSA-LC1

ENSA™

Scalable LED Flood Lights

Deliver incredible results with our range of LED flood lights from 20W to 960W

**110lm/W
20~200W
NSW ESS**

**130lm/W
240~960W
5000K**

Do you have a large scale lighting project in the works? We can help.
Ask us about project assistance & lighting simulations for large and complex lighting installations.

ENSA™

LFL-B Series: Performance LED Floods

- In 20W, 30W, 50W, 70W, 100W, 150W and 200W models
- Exceptional luminous efficacy (+100lm/W), 50,000hrs lifespan
- Range is accepted for use in the NSW Energy Savings Scheme
- High performance in a slimline, aluminium, IP65 rated chassis
- Rectangular 100° beam angle and >80 colour rendering index
- In warm & cool white colour temperatures (3000K/5000K)
- Perfect for residential, commercial and industrial environments

LFL-B20-C/W (20W, 2200lm) LFL-B30-C/W (30W, 3300lm) LFL-B50-C/W (50W, 5500lm) LFL-B70-C/W (70W, 7700lm)

LFL-B100-C/W (100W, 11000lm) LFL-B150-C/W (150W, 16500lm) LFL-B200-C/W (200W, 22000lm)

ENSA™

LFL-D Series: High Power LED Floods

- In 240W, 360W, 480W, 720W and 960W models
- Exceptional luminous efficacy (+130lm/W), 50,000hrs lifespan
- Modular lighting elements with superior heatsink for thermal efficiency
- Rectangular 60° x 100° beam angle and >80 colour rendering index
- Available in cool white colour temperature (5000K)
- Ideal in large scale applications: sporting facilities, carparks, etc.
- Ask us about LED lighting simulation and project quote assistance

LFL-D240-C (240W 31,200lm) LFL-D360-C (360W 46,800lm) LFL-D480-C (480W 62,400lm)

LFL-D720-C (720W 93,600lm) LFL-D960-C (960W 124,800lm)

It is our mission to support & inspire your installation business.



Apply for a trade login

- View pricing and order online
- Download our latest catalogues
- View the latest info on our website
- Get started at www.rhino.com.au

Subscribe to email specials

- Receive weekly email specials with the latest info & deals from RhinoCo
- Receive limited time online deals
- Contact us at sales@rhino.com.au

Connect with us on social

- See news from RhinoCo as it happens including special offers and events
- Follow us @RhinoCoAu on YouTube, Facebook, Twitter, Instagram & LinkedIn

Call, email, order online, visit our four Sydney stores or purchase from a Reseller near you



(02) 9671 6711 | sales@rhino.com.au | www.rhino.com.au



McGraths Hill

Head Office & Warehouse
9 Hannabus Place
McGraths Hill, NSW

Haberfield

Showroom & Sales Office
223-225 Ramsay Street
Haberfield, NSW

Villawood

Showroom & Sales Office
63-69 Middleton Road
Villawood, NSW

Brookvale

Showroom & Sales Office
142 Old Pittwater Road
Brookvale, NSW

NEW SOUTH WALES / ACT

Bitek Canberra

11 Sheppard St,
Hume, ACT 2620
(02) 6260 1874
sales@bitek.com.au
www.bitek.com.au

Bitek Sydney

6 / 8 Victoria Ave,
Castle Hill, NSW 2154
(02) 9659 2272
sales@bitek.com.au
www.bitek.com.au

Mi Technologies

1/68 Roberts Ave,
Mortdale, NSW 2223
(02) 9188 4333
mail@mitechtechnologies.com.au
www.mitechtechnologies.com.au

Rivsec Pty Ltd

11 Berry St,
Wagga Wagga, NSW 2650
1300 093 711
sales@rivsec.com.au

WES Australia

84-90 Parramatta Rd,
Summer Hill, NSW 2130
(02) 8014 3897
sales@wes.net.au
www.wes.com.au

VICTORIA

Bendigo Electronics

167-169 Lyttleton Tce,
Bendigo, VIC 3550
(03) 5444 4044
info@bendigoelectronics.com.au
www.bendigoelectronics.com.au

Bitek Melbourne

7 / 1 Culverlands St,
West Heidelberg, VIC 3081
(03) 9456 9222
sales@bitek.com.au
www.bitek.com.au

AI Group

Unit 7, 35-37 Dunlop Rd,
Mulgrave, VIC 3170
(03) 9540 0708
info@aintelgroup.com
www.aintelgroup.com

SOUTH AUSTRALIA

Bitek Adelaide

Unit 3 / 4 Armiger Ct,
Holden Hill, SA 5088
(08) 8395 4111
sales@bitek.com.au
www.bitek.com.au

Australian Security Supplies

2 Rosslyn St,
Mile End, SA 5031
(08) 8354 0288
sales@ass.com.au
www.ass.com.au

QUEENSLAND

Aver Focus

Unit 6A, 780 Boundary Road
Coopers Plains, QLD 4108
(07) 3277 7708
sales@averfocus.com.au
www.averfocus.com.au

Hub Technology

Suite 1, 154 Lytton Rd,
Bulimba, QLD 4171
(07) 3188 5455
sales@hubtechsec.com.au
www.hubtechsec.com.au

TradeZone

131 Millaroo Dr,
Helensvale, QLD 4212
1800 092 778
customerservice@tradezone.com.au
www.tradezone.com.au

WESTERN AUSTRALIA

Redbox Agencies

Unit 1 / 30 Walters Dr,
Osborne Park, WA 6017
(08) 9242 7355
sales@redboxagencies.com.au
www.redboxagencies.com.au

* Offers valid until 31st January 2019, while stocks last. Prices and product availability subject to change; all prices exclude GST. Errors & omissions excepted. RhinoCo Resellers price, stock availability, and trading terms may vary from RhinoCo Technology. Resellers may special order stock in, however RhinoCo cannot guarantee the same prices, product availability or trading terms when purchasing from Resellers. RhinoCo recommends checking Reseller stock availability and pricing in advance. For full terms and conditions, visit: <https://www.rhinoco.com.au/legal/terms>