



TRADE SPECIALS

Exclusive trade only specials: Only until 31st October 2018

Securing our planet is our responsibility: Join us!
With the best brands in CCTV, Alarms, Access Control & LED Security Lighting

We are your automotive CCTV specialist

SECURVIEW

Mobile-controlled professional in-vehicle surveillance & tracking

- **Dual Cameras:** 1080p Full HD road facing camera with wide 140° lens & cabin camera
- **Remote Access:** Remote live view, playback & export footage via Internet to phone app
- **Vehicle Tracking:** Precision, real-time GPS tracking with geo-fencing & history log
- **2-way Talk:** Voice chat at any time between vehicle & connected smartphone
- **App Control:** View history, manage multiple units & send commands via phone & web app
- **Live Alerts:** Notify of collisions, set speed limits, G-sensor monitors driver behaviour



For more information, see page 2

*SIM, smartphone & microSD sold separately.



Latest in Automotive CCTV



Bulk Surveillance Specials



Gigabit PoE Network Switches



New 4K HDCVI Surveillance



Contact us: (02) 9671 6711 • sales@rhino.com.au • www.rhino.com.au

- Industry leading **4 year warranty** offered on all professional products
- **Well known, unique & protected brands** to add value to your installs
- We **match or better competitor pricing** for directly comparable product
- Enjoy **free expert technical support** on the RhinoCo Technology range

MOBILE CCTV SURVEILLANCE

SECURVIEW™

Professional In-Vehicle Monitoring Solution

- Adjust/rotate camera orientation to suit different windscreens
- Date, timestamp, latitude/longitude & speed footage overlay
- Features backup battery for operation while engine is off
- Online device registration and account to manage devices
- **Kit includes all components for install:** power wiring harness, mounting cradle, 3M adhesive mount, SOS alarm button, backup battery, 12V 40A relay and relay cable, screwdriver



MDVR-J200 (SIM, microSD & phone not included)



*SIM, smartphone & microSD sold separately.

Mobile HDCVI Surveillance: Wide range of Full HD HDCVI cameras and mobile recorders.



SECURVIEW™ VICTORY SERIES

HDCVI Mobile Surveillance Cameras

Mini Dome

- Stream 2.0MP (1920x1080)
- 3.6mm lens (H: 83° view)
- Built-in mic & 20m infrared
- IP67 rated metal body
- Auto day/night (IR cut filter)
- Heavy duty M12 connector

VSCVI2MPDIRAT
(Mini Dome)

Bumper Camera

- Stream 2.0MP (1920x1080)
- 3.6mm lens (H: 83° view)
- Built-in mic & 20m infrared
- IP67 rated metal body
- Auto day/night (IR cut filter)
- Heavy duty M12 connector

VSCVI2MPCIRAT
(Bumper Cam)

Twin Dash Camera

- Twin 2.0MP cameras
- **Rear:** 2.1mm (139° view)
- **Front:** 2.8mm (116° view)
- Built-in mic & 3m infrared
- Auto day/night (electronic)
- Adhesive adjustable mount

VSCVI2MPWTT
(Dash Camera)

IK10 Dome

- Stream 2.0MP (1920x1080)
- 2.8mm lens (H: 106° view)
- Built-in mic & 20m infrared
- IK10/IP67 rated body
- Auto day/night (IR cut filter)
- Heavy duty M12 connector

VSCVI2MPVDIRFT
V2 (IK10 Dome)

Barrel Camera

- Stream 2.0MP (1920x1080)
- 2.8mm lens (H: 109° view)
- Auto day/night (electronic)
- Heavy duty M12 connector
- IP67 rated metal body
- 30mm diameter hole

VSCVI2MPBT2.8
(Barrel Camera)

SECURVIEW™ VICTORY SERIES

HDCVI Mobile Camera Cables

- Heavy duty, screw M12 connectors for vehicle use
- Built for HDCVI mobile DVRs in 3m, 6m, 12m, 18m
- 300mm M12 VGA display cable also available



MCVR-CABLE3M MCVR-CABLE12M
MCVR-CABLE6M MCVR-CABLE18M

MCVR-VGACABLE3M

Automotive CCTV specialists

Featuring the best in IP and HDCVI mobile surveillance cameras & recorders.



4 & 8 Channel Mobile PoE NVRs

- **Avail. in 4 or 8 channels, precision GPS standard, 4G/WiFi optional**
- Stream up to 2.0MP/1080p (200Mbps); complete 4/8 port PoE support
- 2 x 2.5" SATA HDD up to 4TB each, 1 x eSATA port, 1 x SD card slot
- Backup via USB/network or over WiFi (optional), HDMI/VGA/TV ports
- 8/2 alarm input/output, 6~36VDC power input, CAN bus support
- 2 DIN size, lockable HDD/SIM tray

MNVR-GPS
(4CH, GPS only)

MNVR-GPS8GW
(8CH, GPS/4G/WiFi)

MNVR-GPS4GW
(4CH, GPS/4G/WiFi)



4 & 8 Channel Mobile HDCVI DVRs

- **Avail. in 4 or 8 channels, precision GPS standard, 4G/WiFi optional**
- Support for HDCVI and analogue video inputs, 1 x VGA / 2 x TV outputs
- Backup via USB/network, lockable HDD/SIM tray, M12 camera inputs
- 7/2 alarm input/output, 6~36VDC power input, CAN bus support

- **4CH:** Records 2.0MP at 2CH + 1.0MP at 2CH at 25fps
- 1 x 2.5" SATA port & SD card slot

- **8CH:** Records 2.0MP at 25fps across 8 channels
- 2 x 2.5" SATA port & SD card slot

MCVR-GPS
(GPS only)

MCVR-GPS8
(GPS only)

MCVR-GPS4GW
(GPS/4G/WiFi)

MCVR-GPS8GW
(GPS/4G/WiFi)



1080p & 720p LED Monitors

- **Display Securview Mobile Series surveillance cameras in native 1080p resolution**
- 7.0" and 10.1" LED monitors, ideal for mobile CCTV
- VGA, HDMI, composite, BNC & USB inputs
- Includes monitor stand, base & display cable
- **LCD10FHD:** 1920 x 1200 resolution (16:10), 75x75 VESA support, 5ms delay, 12VDC/2A
- **LCD10SD:** 1280 x 800 resolution (16:10), 75x75 VESA support, 12ms delay, 12/24VDC/2A
- **LCD7SDA:** 800x480 resolution (16:9), supports up to 1080p cameras, 12/24VDC/2A

Full HD
1080

HD
720P



LCD7SDA
(800x480 resolution)

LCD10SD
(720p resolution)

LCD10FHD
(1080p resolution)



Essential CCTV Extravaganza

Every install covered with the best price for performance fixed lens IP surveillance.



Add incredible value to your installs with:



Smart video functions

- Tripwire, intrusion, object detection and face detection as standard
- PTZ dome cameras feature auto-tracking & image stabilisation
- Includes pro features such as true WDR and recording via microSD



Wide range of models

- Available in 2.0MP, 4.0MP and 6.0MP in a selection of lens options
- Bullets, turret domes, vandal and wedge domes available
- Consistent performance across the range in a wide variety of models



All purpose solutions

- Ready for any conditions with IP67 weather rated housings
- High durability aluminium chassis design across the range
- Huge range of ceiling, wall, corner and pole brackets for each model

Enjoy even greater savings when you buy in bulk!



2.0MP IP Mini Bullet

- 2.0MP@50fps, 3.6mm lens (87°), 40m IR, IVS incl. face detect, true WDR, microSD, compact size, IP67

VSIP2MPFBMINIIRV3
(2.0MP 3.6mm)



20pcs
Carton



2.0MP IP IK10 Bullet

- 2.0MP@50fps, 3.6mm lens (87°), 60m IR, IVS incl. face detect, true WDR, microSD, ePoE, alarm I/O, audio I/O, IP67/IK10

VSIP2MPFBMINIIR
(2.0MP 3.6mm)



20pcs
Carton



4.0MP IP Wedge Dome

- 4.0MP@25fps, 2.8mm (104°), 3.6mm (87°), 6.0mm (57°), 20m IR, IVS incl. face detect, true WDR, microSD, built-in mic, IP67/IK10

VSIP4MPVDIRFV2
(4.0MP in 2.8, 3.6, 6.0mm)



20pcs
Carton



4CH & 8CH PoE NVRs

- Record up to 4K (3840x2160), 80Mbps bandwidth, 1 x SATA port up to 10TB, PoE across all channels, HDMI/VGA, config via QR code

NVR4COM2
(4CH, 1 HDD bay)

NVR8COM2
(8CH, 1 HDD bay)



2.0MP IP Turret Dome

- 2.0MP@50fps, 2.8mm (104°), 3.6mm (87°), 50m IR, IVS incl. face detect, true WDR, built-in mic, microSD, ePoE, IP67

VSIP2MPVDMINIIRCB
(2.0MP in 2.8, 3.6mm)



20pcs
Carton



4.0MP IP Turret Dome

- 4.0MP@25fps, 2.8mm (104°), 3.6mm (87°), 50m IR, IVS incl. face detect, true WDR, built-in mic, microSD, ePoE, IP67

VSIP4MPVDMINIIRCB
(4.0MP in 2.8, 3.6mm)



20pcs
Carton



6.0MP IP Turret Dome

- 6.0MP@20fps, 2.8mm (98°), 3.6mm lens (69°), 50m IR, IVS incl. face detect, true WDR, built-in mic, microSD, ePoE, IP67

VSIP6MPVDMINIIRCB
(6.0MP in 2.8, 3.6mm)



20pcs
Carton



2.0MP IP Auto Track PTZ

- 2.0MP@50fps, 25x zoom, 4.8 ~ 120mm (59~2.4°), 150m IR, IVS incl. face detect, true WDR, microSD, IP67, audio/alarm I/O, 360° panning

VSIP2MPPTZV2
(6.0MP in 2.8, 3.6mm)



Buy
5 &
Save

NETWORK CCTV SURVEILLANCE

Professional IP Series: Ultra HD NVRs with PoE, available in 4, 8, 16, 24 and 32 channels.



Professional 4CH NVR

- Records 8.0MP (3840 x 2160), up to 200Mbps
- Built-in 4 port PoE switch, H.265 support
- 2 x SATA up to 20TB, 1 x HDMI, 1 x VGA
- 4/2 Alarm I/O, QR code remote config.

NVR4PRO3
(4CH, 4 x PoE)



Professional 8CH NVR

- Records 12.0MP (4000 x 3000), up to 320Mbps
- Built-in 8 port PoE switch, H.265 support
- 2 x SATA up to 20TB, 1 x HDMI, 1 x VGA
- 4/2 Alarm I/O, QR code remote config.

NVR8PRO6
(8CH, 8 x PoE)



Professional 16CH NVR

- Records 12.0MP (4000 x 3000), up to 320Mbps
- Built-in 16 port PoE switch, H.265+ support
- 4 x SATA up to 40TB, 2 x HDMI, VGA, eSATA
- 16/6 Alarm I/O, RS232/485, QR code config.

NVR16PRO7
(16CH, 16 x PoE)



Professional 24CH NVR

- Records 12.0MP (4000 x 3000), up to 320Mbps
- Built-in 24 port PoE switch, H.265 support
- 4 x SATA up to 40TB, 2 x HDMI, VGA, eSATA
- 16/6 Alarm I/O, RS232/485, QR code config.

NVR24PRO6
(24CH, 24 x PoE)



Professional 32CH NVR

- Records 12.0MP (4000 x 3000), up to 320Mbps
- Built-in 16 port PoE switch, H.265 support
- 4 x SATA up to 40TB, 2 x HDMI, VGA, eSATA
- 16/6 Alarm I/O, RS232/485, QR code config.

NVR32PRO16P2
(32CH, 16 x PoE)



Non-PoE NVRs in 16CH and 32CH

- Records 12.0MP (4000 x 3000), up to 320Mbps
- External PoE required, H.265 support, QR code
- Alarm I/O, HDMI/VGA, eSATA, RS232/485

NVR16PRO6NP (16CH, 2 x SATA, 1 x RJ45) **NVR32PRONP2** (32CH, 4 x SATA, 2 x RJ45)

Ultimate NVR Series: High functionality NVRs for large premises; 32, 64 & 128 channels.



Ultimate Series NVRs

- Record up to 12.0MP resolution (4000 x 3000), beyond 4K/Ultra HD
- 8 x SATA (32CH) and 16 x SATA (64/128CH); hot-spare/swap support
- 384Mbps incoming bandwidth to handle large number of inputs
- High performance surveillance with Intel® Core™ processors
- RAID profiles support for HDD optimisation and redundancy
- Live view in Ultra HD (3840 x 2160); multi-screen display support
- Alarm I/O with programmable relay outputs, RS232, RS485 and eSATA
- Gigabit interface: 2 x RJ45 ports (32CH); 4 x RJ45 & 2 x optical (64/128CH)

NVR32ULTNPV2
(32CH, No PoE)

NVR64ULTNPV2
(64CH, No PoE)

NVR128ULTNPV2
(128CH, No PoE)





The perfect image every time

Remotely configure your CCTV install with Pro & Ultimate motorised lens cameras.



Pro Motorised IP Dome

- Stream up to 4.0MP (2688 x 1520) at 20fps
- 2.7~13.5mm motorised lens (104~28°), fixed iris
- 50m IR, true WDR (120dB), MicroSD, IP67 rated

VSIP4MPVDIRME
(4.0MP)



Pro Motorised IK10 IP Dome

- Stream up to 4.0MP (2688 x 1520) at 20fps
- 2.7~13.5mm motorised lens (104~28°), fixed iris
- 50m IR, true WDR (120dB), MicroSD, IP67/IK10

VSIP4MPVDIRMD
(4.0MP, IK10 rated)



Pro Motorised IP Bullet

- Stream 4.0MP (2688 x 1520) at 20fps
- 2.7~13.5mm motorised lens (104~28°), fixed iris
- 60m IR, true WDR (120dB), MicroSD IP67 rated

VSIP4MPFBIRMD
(4.0MP)



Ultimate IP Bullets

- Stream 8.0MP (3840 x 2160) 15fps
- 2.7 ~ 12mm motorised varifocal lens with DC auto iris (102°~39°)
- Avail. in 7~35mm lens (38°~14°) (-Z)
- 50m smart infrared (-Z 100m)
- 8 smart video analytic functions
- H.265, true WDR, microSD, alarm I/O, audio I/O, video tester output, IP67, ePoE

VSIP8MPFBIRM
(2.7~12mm lens)

VSIP8MPFBIRM-Z
(7~35mm lens)



Ultimate IP Dome

- Stream 8.0MP (3840 x 2160) 15fps
- 2.7 ~ 12mm motorised varifocal lens with DC auto iris (102°~39°)
- 50m smart infrared system
- 8 smart video analytic functions
- H.265, built in microphone, digital WDR, microSD slot, IP67 full metal housing

VSIP8MPVDIRME
(2.7~12mm lens)



Ultimate IP Vandal Domes

- Stream 8.0MP (3840 x 2160) 15fps
- 2.7 ~ 12mm motorised varifocal lens with DC auto iris (102°~39°)
- Avail. in 7~35mm lens (38°~14°) (-Z)
- 50m smart infrared system
- 8 smart video analytic functions
- H.265, true WDR, microSD, alarm I/O, audio I/O, video tester out, IP67 & IK10 housing, ePoE

VSIP8MPVDIRM
(IK10, 2.7~12mm)

VSIP8MPVDIRM-Z
(IK10, 7~35mm)



Ultimate IP Domes

- Stream 8.0MP (3840 x 2160) 15fps
- Stream 6.0MP (3072 x 2048) 20fps
- 8.0MP: 2.7 ~ 12mm motorised lens with DC auto iris (102°~39°)
- 6.0MP: 2.7 ~ 13.5mm motorised lens with DC auto iris (91°~27°)
- 50m smart infrared system
- 8 smart video analytic functions
- H.265, true WDR, microSD, built in microphone, IP67

VSIP6MPVDIRMG
(6.0MP)

VSIP8MPVDIRMG
(8.0MP)



Transform your IP installations

Deliver amazing results with 180°, 360°, pinhole and PTZ cameras from VIP Vision.



6.0MP Panoramic IP Bullet

- 3 x image sensor & lens panoramic system
- Stitched resolution 4096 x 832 (3.4MP)
- 180° horizontal & 44° vertical field of view
- H.265, MicroSD, true WDR (120dB), 30m IR
- Alarm & audio I/O; IP67/IK10 rated housing

VSIP6MPPA
(3x sensors)



8.0MP Panoramic IP Bullet

- 4 x image sensor & lens panoramic system
- Stitched resolution 4096 x 1800 (7.4MP)
- 180° horizontal & 80° vertical field of view
- H.265, MicroSD slot, digital WDR, 30m IR
- Alarm & audio I/O; IP67/IK10 rated housing

VSIP8MPPAV2
(4x sensors)



8.0MP Panoramic IP Dome

- 4 x image sensor & lens panoramic system
- Stitched resolution 4096 x 1800 (7.4MP)
- 180° horizontal & 80° vertical field of view
- H.265, MicroSD slot, digital WDR, 30m IR
- Alarm & audio I/O; IP67/IK10 rated housing

VSIP8MPPADV2
(4x sensors)



2.0MP/4.0MP Fixed Lens IP Pinhole Cameras

- Available in 2.0MP & 4.0MP
- 2.8mm wide angle fixed lens
- Stream 2.0MP/4.0MP up to 25fps
- MicroSD slot, electronic day/night
- Includes 8m cable, mounting kit
- 4.0MP model requires lens & control unit
- Discreet 5mm lens profile

VSIP4MPPHC
(4.0MP lens, 83°)

VSIP4MPPHM
(4.0MP control unit)

VSIP2MPPH
(2.0MP complete unit, 104°)



Includes
Wall/Ceiling
Mount



1.0MP Fixed IP Pinhole Cam

- Stream 720p HD at 25fps (1280 x 720)
- 3.6mm fixed standard lens (77°)
- Electronic day/night, True WDR (120dB)
- Incredibly compact, only 30x30x22mm
- U-shape mount, cable included

VSPINHOLE3.6
(1.0MP)

Professional IP PTZs: Exceptional PTZs with auto-tracking & multiple analytic functions.



2.0MP Surface Mount IP PTZ

- Stream 2.0MP at 25fps, 5.1~61mm motorised lens (59° ~ 5.2°), audio & alarm I/O, true WDR
 - Endless 360° pan
 - Ultra low light 0.005lx
 - MicroSD slot up to 128GB; IP66 & IK10 rated body
- VSIP2MPPTZV3**



2.0MP Recessed IP PTZ

- Stream 2.0MP at 25fps, 4.8~120mm motorised lens (59° ~ 2.4°), audio & alarm I/O, true WDR
 - 500°/s fast, endless 360° pan and 0~90° tilt
 - Ultra low light (0.005lx)
 - IK10 vandal rated dome
- VSIP2MPPTZCV3**



4.0MP Compact IP PTZ

- Stream 4.0MP at 25fps, 2.7~11mm motorised lens (112.5°~30°), microSD slot, true WDR (120dB)
 - 355° panning, 0~90° tilt, video analytics
 - Small Ø122mm footprint
 - IP66/IK10 rated body
- VSIP4MPPTZMINI**



Auto Tracking 4.0MP IP PTZ

- Intelligent auto tracking on motion detect
- Electronic image stabilisation & analytics
- Stream up to 4.0MP (2592 x 1520) at 25fps
- Motorised 4.5~135mm (60~2.2°) 30x zoom
- 0.05lx@F1.6 low light colour performance
- Tripwire, face detection, intrusion, missing and abandoned object detection
- True WDR (120dB), microSD slot (128GB)
- Endless 360° pan, 15~90° tilt, 400°/s pan
- 1/1 audio and 2/1 alarm input/output
- IP66 weather rated, metal housing
- Supports power via PoE+ switch (802.3at)
- Includes. right angle mount & PSU

VSIP4MPPTZIR
(4.0MP, 30x zoom)



Auto Tracking IP Positioning Camera

- Intelligent auto tracking on motion detection
- Wide tilt range -90~90° and 360° panning
- Electronic image stabilisation & analytics
- Stream up to 2.0MP (1920 x 1080) at 50fps
- 4.8~120mm (59.2~2.4°) 25x zoom
- Ultra low-light colour: 0.005lx @ F1.6
- 150m LED infrared system & ultra DNR
- True WDR (120dB), microSD slot (128GB)
- Tripwire, face detect, heat map & more
- 1/1 audio and 2/1 alarm input/output
- Supports power via PoE+ switch (802.3at)
- IP67 weather & IK10 vandal rated metal body
- Extreme temperature capability; -40~70°C
- Incl. junction box, wall mount sold separately

VSIP2MPPTZIRW
(2.0MP, 25x zoom)



Fisheye IP Series: 360° field of view cameras to transform your IP surveillance installs.



VSIP12MPFEIRV2
(IK10/IP67, 12.0MP)



VSIP5MPFEV2
(5.0MP, IK08/IP67)



360° IP Fisheye Domes

- Available in 12.0MP and 5.0MP models
- Stream up to 12.0MP (4000 x 3000) at 25fps
- 5 image dewarp incl. ePTZ, panoramic and multiple split views; ceiling/wall/surface modes
- MicroSD slot, alarm & audio I/O, IK10 housing
- **12.0MP:** 1.98mm circular fisheye lens (360°), 10m 360° infrared, IP67/IK10, H.265, video analytics including face detection
- **5.0MP:** 1.42mm circular fisheye lens (360°), electronic day/night, H.265, IK08/IP67 only

HD OVER COAX SURVEILLANCE

Compact 1.0MP HDCVI DVRs: 720p Victory Synergy DVRs available in 8 and 16 channels.



Compact 1.0MP HDCVI DVRs

- Available in 8 and 16 channel models
- Records 1.0MP (1280 x 720) at 15fps
- HDCVI, HDTVI, AHD, analogue input support
- Add up to 2 x IP inputs up to 5.0MP
- 1 x SATA port for up to 10TB max. HDD capacity
- 1 x HDMI and 1 x VGA display inputs
- iOS/Android remote view in seconds via QR code



Compact HDCVI Series: Affordable fixed lens surveillance available in 1.0MP and 2.0MP.



Compact HDCVI Bullets

- Available in 1.0MP and 2.0MP
- 1080p Full HD 2.0MP (1920 x 1080)
- 720p HD 1.0MP (1280 x 720)
- 3.6mm fixed lens across the range
- 20m infrared range
- IP67 weather resistant, metal body
- HDCVI/composite switchable with VSSELECT101, see p.6

VSCVI1MPFBIRV2
(1.0MP, 72° view)

VSCVI2MPFBIRV2
(2.0MP, 83° view)



Compact HDCVI Domes

- Available in 1.0MP and 2.0MP
- 1080p Full HD 2.0MP (1920 x 1080)
- 720p HD 1.0MP (1280 x 720)
- 3.6mm fixed lens across the range
- 50m infrared range
- IP67 weather resistant, metal body
- HDCVI/composite switchable with VSSELECT101, see p.6

VSCVI1MPDIRV4
(1.0MP, 72° view)

VSCVI2MPDIRV4
(2.0MP, 83° view)



Professional HDCVI Series: High performing fixed lens surveillance in 2.0MP and 4.0MP.



Fixed Lens HDCVI Bullets

- Available in 2.0MP and 4.0MP
- Stream up to 4.0MP (2560 x 1440)
- Select models in 3.6mm & 2.8mm lens
- 40m IR, true WDR, HDCVI & composite outputs, IP67 rated, metal housing
- Up to 700m transmission (RG59 coax)

Fixed Lens HDCVI Domes

- In 2.0MP and 4.0MP, in 2 dome styles
- Stream up to 4.0MP (2560 x 1440)
- Select models in 3.6mm & 2.8mm lens
- Up to 50m IR, true WDR, HDCVI & composite outputs, IP67/IK10 avail.
- Up to 700m transmission (RG59 coax)



Built to update existing CCTV

With dual power & switchable outputs, the Victory Series is built for CCTV upgrades.

Professional HDCVI Series: Motorised varifocal lens surveillance in 2.0MP and 4.0MP.



Motorised Lens HDCVI Bullets

- Available in 2.0MP and 4.0MP
- Stream up to 4.0MP (2560 x 1440)
- Motorised lens 2.7~12mm, fixed iris
- 60m infrared and true WDR (120dB)
- 2 x video outputs: HDCVI & composite
- Up to 700m transmission (RG59 coax)
- IP67 weather resistant, metal housing
- Dual power support: 12VDC or 24VAC



Motorised Lens HDCVI Domes

- In 2.0MP and 4.0MP, in 2 dome styles
- Stream up to 4.0MP (2560 x 1440)
- Motorised lens 2.7~12mm, fixed iris
- Up to 60m infrared and true WDR (120dB)
- 2 x video outputs: HDCVI & composite
- Up to 700m transmission (RG59 coax)
- IP67 weather rated; IK10 model available
- Dual power support: 12VDC or 24VAC



Ultimate HDCVI Series: Top-featured HDCVI cameras with the best low light performance.



Ultra Low Light HDCVI Cameras

- Large 1/2.8" CMOS sensor for light capture
- 0.005 Lux at F1.4 min. colour illumination
- Stream Full HD 2.0MP (1920 x 1080)
- 2.7~12mm motorised lens (95~36°), auto iris DC
- 2 x BNC video outputs: HDCVI & composite
- Infrared 100m (bullet) / 50m (dome), true WDR
- Audio interface & 1 / 1 alarm input / output
- Dual power support: 12VDC or 24VAC
- Up to 700m transmission (RG59 75-3 coax)
- On-camera zoom / focus adjustment
- IP67 rated metal housings; IK10 vandal dome



Amazing 4K coaxial upgrades

The latest Securview 4K video over coax range, up to 20x greater resolution than D1.

4K
ULTRA HD

4
YEAR
WARRANTY



SECURVIEW
VICTORY SERIES

Pro 8.0MP Fixed Lens HDCVI Mini Bullet

- Stream up to 4K (3840 x 2160)
- 2.8mm fixed lens, 111° view angle
- 1/2" sensor; 0.005lx low light colour
- 40m IR, true WDR, built-in mic, IP67, 12VDC, HD/SD switchable

VSCVI-8BIRG

SECURVIEW
VICTORY SERIES

Pro 8.0MP Fixed Lens HDCVI Mini Dome

- Stream up to 4K (3840 x 2160)
- 2.8mm fixed lens, 111° view angle
- 1/2" sensor; 0.005lx low light colour
- 50m IR, true WDR, built-in mic, IP67, 12VDC, HD/SD switchable

VSCVI-8DIRG

SECURVIEW
VICTORY SERIES

Pro 8.0MP Motorised Lens HDCVI Bullet

- Stream up to 4K (3840 x 2160)
- 3.7 ~ 11mm motorised lens with fixed iris, 112 ~ 46° view angle
- 1/2" sensor; 0.005lx low light colour
- 80m IR, true WDR, built-in mic, IP67, 12VDC, HD/SD switchable

VSCVI-8BIRMG

SECURVIEW
VICTORY SERIES

Pro 8.0MP Motorised Lens HDCVI Dome

- Stream up to 4K (3840 x 2160)
- 3.7 ~ 11mm motorised lens with fixed iris, 112 ~ 46° view angle
- 1/2" sensor; 0.005lx low light colour
- 60m IR, true WDR, built-in mic, IP67, 12VDC, HD/SD switchable

VSCVI-8DIRMG

Ultra HD Over Coax: Deliver amazing analogue upgrade results with 4K video over coax.



Pro 8.0MP HDCVI Bullet with Motion Detection

- 4K HDCVI surveillance bullet with built-in PIR motion detection
- Combines pixel & PIR motion detection to eliminate false alarms
- Stream up to 4K (3840 x 2160), 2.8mm fixed lens, 111° view angle
- 1/2" sensor; 0.005lx low light colour, 20m IR, true WDR, IP67, 12VDC, HD/SD switchable, 10m/110° PIR motion detection range

VSCVI-8BIRP
(PIR motion sensor)



4K
ULTRA HD

4
YEAR
WARRANTY

Features
PIR Motion
Detection



Ultimate 8.0MP HDCVI Series

- Large 1/2" CMOS sensor for high resolution
- Stream Ultra HD / 8.0MP (3840 x 2160)
- 3.7~11mm motorised lens (112~46°), auto iris DC
- 2 x BNC video outputs: HDCVI & composite
- Infrared 100m (bullet) / 50m (dome), true WDR
- Audio interface & 2/1 alarm input/output
- Dual power support: 12VDC or 24VAC
- Up to 700m transmission (RG59 75-3 coax)
- On-camera zoom / focus adjustment
- IP67 rated metal housings; IK10 vandal dome



VSCVI8MPFBIRM

VSCVI8MPVDIRM

Hurry!
Limited
Stock!

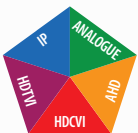
4K
ULTRA HD

Hurry!
Limited
Stock!

4K
ULTRA HD

4
YEAR
WARRANTY

Compact & Pro 4K HDCVI DVRs: Record 8.0MP at 7fps in 8/16 channels, in 1/2 HDD bays.



Victory Synergy: The best in cross compatibility with IP, HDCVI, HDTVI, AHD and analogue input support



Brand
New
GUI

4
YEAR
WARRANTY



4
YEAR
WARRANTY



Compact Series 8.0MP HDCVI DVRs

- In 8 or 16 channels with 2TB/4TB HDD installed (other options avail.)
- Record up to 4K / 8.0MP (3840 x 2160) at up to 7fps
- H.265 codec support for best efficiency 4K / 8.0MP video storage
- Victory Synergy: Support for IP, HDCVI, AHD, HDTVI, composite inputs
- Add IP inputs up to 8.0MP: 8CH +4 IP (48Mbps), 16CH +8 IP (96Mbps)
- HDMI, VGA, 2 x USB, RS485, IVS & smart search support, 12VDC

CVR8COM-2T
(8CH, 8.0MP)
With 2TB installed

CVR16COM-4T
(16CH, 8.0MP)
With 4TB installed

Professional Series 4.0MP/8.0MP HDCVI DVRs

- Available in 4 (4.0MP only), 8 or 16 channels with 2TB bay up to 20TB
- Record up to 8.0MP (3840 x 2160) up to 7fps; 4.0MP (2560 x 1440) at 15fps
- H.264+ codec support for high efficiency 4K / 8.0MP video storage
- Victory Synergy: Support for IP, HDCVI, AHD, HDTVI, composite inputs
- Add IP inputs up to 8.0MP: 8CH +4 IP (48Mbps), 16CH +8 IP (96Mbps)
- HDMI, VGA, 2 x USB, RS485, IVS, face detect, smart search, 12VDC

CVR4PRO2
(4CH, 4.0MP)

CVR8PRO2
(8CH, 8.0MP)

CVR16PRO2
(16CH, 8.0MP)

HDCVI SURVEILLANCE ACCESSORIES

Surveillance Accessories: Convert and extend your IP/HDCVI CCTV surveillance systems.



SECURVIEW
VICTORY SERIES

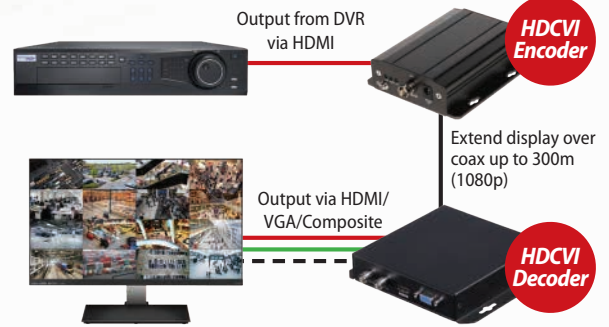
HDCVI Encoder & Decoder

- Extend CCTV to spot monitors over coaxial cable; split to VGA, HDMI, composite & inline HDCVI
- HDCVI & HDMI feed to monitors over coax.
- Includes power supplies for encoder & decoder

VSCVIDECODER
(HDCVI to HDMI/VGA/
Composite)

VSCVIENCODER
(HDMI to HDCVI)

Integration Overview



SECURVIEW

Ethernet over Coax Extenders

- Extend Ethernet/Power from PoE switch over coax
- Range includes transmitter and receiver
- Extend over coax up to 400m@100Mbps and up to 1000m@10Mbps (using RG59 coax)
- *Transmitter & receiver sold separately

VSEOC-ATX (Transmitter)
VSEOC-ARX (Receiver)



**Extend
Up to
1000m**

SECURVIEW

HDCVI Video Isolator

- Solve image interference caused by ground loops
- 75Ω BNC male to female
- 100MΩ insulation resistance
- 800V isolation voltage
- 600V ESD contact discharge
- 4KV 10/700us surge protection
- 400mm cable length



VSGLI

SECURVIEW

Passive HDCVI Balun Pair

- Transmit HDCVI or composite video over CAT5e or CAT6 Ethernet cable
- 400m@720p max.
- 250m@1080p max.
- UTP terminal block



VSBALHDP
(Balun Pair)

SECURVIEW

4 & 8 Port Passive HDCVI Balun

- Transmit coax video signal over UTP cable
- Compatible with HDCVI, HDTV & AHD signals
- Transmit HD video up to 400m (passive/passive) and up to 600m (passive/active)
- Supports CAT5/CAT5e/CAT6 UTP cable
- Compact design, surge protection
- Includes rackmount components



VSBALHDP4
(4 Port)

VSBALHDP8
(8 Port)

HDCVI / Surveillance Testing: For testing and calibration of cameras & cable on site.

SECURVIEW
VICTORY SERIES

UTC Video Output Controller

- Easily switch compatible cameras between coaxial transmission technologies without need for OSD or using HDCVI DVR / tester
- Simple plug & play operation, light up buttons
- Switch between HDCVI / HDTV, AHD & analogue
- Use with most HDCVI & Securview HDCVI cameras with switchable video output
- 2 x AAA battery powered, batteries included



**Easy
In-line
Use**

VSELECT101

VIP
VISION

Complete Camera & Cable Tester

- Test & configure IP, HDCVI & analogue cameras
- 4.0" IPS display & flip-out QWERTY keyboard
- 2 x RJ45 (1000M), 2 x BNC, RS485, USB & more
- Configure static IP, DHCP, camera calibration; test camera discovery, live video, PTZ, audio
- TDR detection up to 150m; PoE testing (PD/PSE)
- Up to 10 hours operation, 3~4 hours recharge



**Complete
CCTV Test
Solution**

VSTEST101



Install surveillance anywhere

Access VIP Vision Solar CCTV Surveillance from almost any location via 4G or WiFi.



Solar PTZ Surveillance



WiFi or 4G Connectivity



Motion Area Light



Solar CCTV Surveillance Systems

- Standalone powered and network IP surveillance
- Preconfigured to your required specifications
- Efficient 75W monocrystalline silicon solar panel
- 4G or long range WiFi integration for remote view
- Lasts up to 2 days from full charge in cloudy conditions
- 41.6Ah lithium iron phosphate battery (LiFePo 4)
- Built-in 40W microwave motion sensor LED area light with 10m detection range at 8m height (65° angle)
- Ø50~60mm pole mount diameter*

*Pole/base not included. SIM card sold separately.

Available by special order, contact us to find out more.

Includes 4.0MP Mini PTZ Dome Camera

- Stream 4.0MP at 25fps, 2.7~11mm motorised lens (112.5°~30°), true WDR (120dB)
- Includes pre-installed 128GB MicroSD card
- 355° panning, 0~90° tilt, video analytics
- Small Ø122mm footprint
- IP66/IK10 rated body

SLR-A75-4W (WiFi)
SLR-A75-4G (4G)

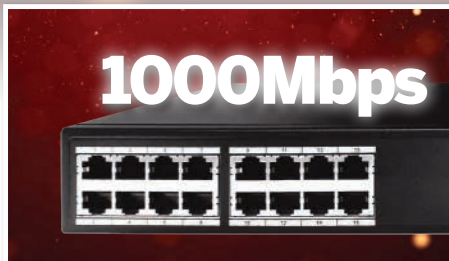


Contact RhinoCo to find out more



Gigabit & HiPoE Networking

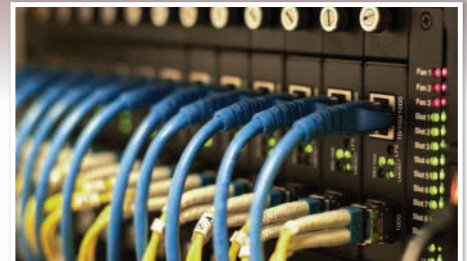
Deliver reliability, performance & convenience with our high speed PoE switches.



Gigabit performance



Up to 250m PoE range



Fibre network support



Fast Hi-PoE Switches (SWA Series)

- **8, 16 & 24 port 100M PoE switches with 1000M uplink**
- **PoE+ (30W) & Hi-PoE (60W) support; 250m PoE range**
- **8 ports:** Unmanaged switch, 8 x 100M PoE+ ports (1x Hi-PoE port), 2 x 1000M RJ45 uplink ports, 96W total power
- **16 port:** L2 managed switch, 16 x 100M PoE+ ports (2 x Hi-PoE ports), 2 x 1000M RJ45 & 2 x 1000M SFP uplink ports, 240W total power
- **24 port:** L2 managed switch, 24 x 100M PoE+ ports (2 x Hi-PoE ports), 2 x 1000M RJ45 & 2 x 1000M SFP uplink ports, 360W total power

VSPOE-SWA8G
(8 port, unmanaged)

VSPOE-SWA16
(16 port, L2 managed)

VSPOE-SWA24
(24 port, L2 managed)



Gigabit PoE Switches (SWB Series)

- **8, 16 & 24 port 1000M PoE switches with 1000M uplink**
- **PoE+ (30W) & Hi-PoE (60W) support**
- **8 ports:** Unmanaged switch, 8 x 1000M PoE+ ports (1x Hi-PoE port), 96W total power
- **16 port:** L2 managed switch, 16 x 1000M PoE+ ports, 4 x 1000M SFP uplink ports, 250W total power
- **24 port:** L2 managed switch, 24 x 1000M PoE+ ports, 4 x 1000M SFP uplink ports, 370W total power

VSPOE-SWB8G
(8 port, unmanaged)

VSPOE-SWB16G
(16 port, L2 managed)

VSPOE-SWB24G
(24 port, L2 managed)

Network Essentials: Power 60W cameras via PoE with our new Hi-PoE network switches.



8 Port PoE+ DIN Rail Switch

- 8 x 100M PoE+ ports
- 1 x 1000M RJ45 uplink port
- 1 x 1000M SFP fibre port
- Up to 100 metre PoE range
- Unmanaged PoE switch
- All ports: 30W, Total: 93W
- DIN rail mountable switch



VSPOE-SW8
(8 port, PoE+)



4 Port Extended PoE DIN Rail Switch

- 4 x 100M PoE+ ePoE ports
- 1 x 1000M RJ45 uplink port
- 1 x 1000M SFP fibre port
- Up to 800m PoE at 10Mbps, and 300m PoE at 100Mbps
- 1 x Hi-PoE (60W) & 3 x PoE+ ports (30W); 93W total power



VSPOE-SW4E
(4 port, ePoE)



9 Port Gigabit DIN Rail Switch

- 5 x 1000M RJ45 ports
- 4 x 1000M SFP fibre ports
- Layer 2 hardened, unmanaged switch
- ESD & lightning protection with -30 ~ 65° temperature range



VSETH-SW9GF
(9 port, non-PoE)



Extend
IP CCTV
300m



PoE Midspan & Extender

- Integrate Midspan & up to 3 Extenders to extend IP cameras up to 300m (≤ 8W per camera)
- Facilitates passive PoE power supply cascade
- 60W 10/100/1000M high power midspan for PTZs
- Add up to 3 x 10/100M extenders up to 300m
- Midspan wall mount, extender DIN rail kit incl.

VSPOE-MS
(Midspan)

VSPOE-EX
(Extender)



Mini GBIC Multimode Fibre Adapter

- Mini GBIC/SFP adapter for Base-X SFP ports
- Multimode; compatible with OM1 & OM2 fibre
- Up to 550m transmission distance over OM2
- Transfer speeds of up to 1.25Gbps
- LC optical fibre connector
- Hot pluggable & optical power monitoring

SFPMM1
(Mini GBIC/SFP)



4G,
WiFi &
VoIP



4G Modem Router with WiFi

- Fast LTE CAT4 connections of up to 150Mbps*
- 4 x Gigabit (1000M) Ethernet ports for LAN/WAN
- 250m WiFi coverage, support for 32 devices
- 1 x USB printer/flash storage; 1 x RJ11 for VoIP
- 4G: FDD 700/900/1800/2100/2600; TDD 2300Mhz
- 3G UMTS B1/B8 1900/2100Mhz & GSM bands

VSWAN4GHW
(4G SIM not incl.)

Long Range Wireless: A variety of access points for high performance wireless networks.

5GHz PowerBeam Long Range Access Point

- High performance 25dBi 5GHz antenna, +25km range, passive PoE
- 10/100/1000M, ±20° tilt adjustment, includes radome shield
- Ideal for long-range point-to-point/multi-point applications

5GHz LiteBeam & Nanostation Access Points

- Ideal for outdoor point-to-point/multi-point applications
- **LiteBeam:** 120° 16dBi 5GHz antenna with passive PoE (1000M)
- **NanoStation:** 43° 16dBi 5GHz antenna with passive PoE (100M)

Require pre-configured wireless networking equipment? **We can help.**

Simply quote the below models and we will pre-configure your LiteBeam APs before shipping **at no extra cost.**

WT5-ULB-PACKA: 2 modules, wireless bridge configuration
WT5-ULB-PACKB: 3 modules, point-to-point configuration

25km
Long Range
5GHz



WT5-UPBAC52
(PowerBeam)

120°
Outdoors
5GHz



WT5-ULB
(LiteBeam)

15km
Outdoors
5GHz



WT5-UNS
(NanoStation)

SURVEILLANCE ESSENTIALS

SECURVIEW™

LED Flood Infrared Illuminators

- Assists low-light/night CCTV performance
- 850nm wavelength, IP66 rated robust housing
- Aluminium & tempered glass construction
- Available in 11W, 28W and 60W models in 30°, 60° & 120° beam angles

See max. range & beam angle below:

- 11W: 90m (30°), 50m (60°), 20m (120°)
- 28W: 170m (30°), 100m (60°), 50m (120°)
- 60W: 280m (30°), 150m (60°), 75m (120°)

VSIR11W30/60/120D
(11W, in 30°, 60°, 120°)

VSIR28W30/60/120D
(28W, in 30°, 60°, 120°)

VSIR60W30/60/120D
(60W, in 30°, 60°, 120°)



SECURVIEW™

4 Channel 12VDC 5A Power Supply

- 4-Channel 5-Amp power distribution
- Included mounting bracket for easy access and reduced power cord clutter
- Universal input voltage: 100~240 VAC
- Adjustable output voltage: 12~13.8 VDC
- Built-in 6.8-Amp overcurrent protection.
- High voltage and overcurrent protection
- LED Power indicator, 150 x 55 x 33mm

PS12V5A4CH



SECURVIEW™

12VDC 5A Switchmode PSU

- 4100~240VAC input, 12VDC 5A output
- 1.5m input lead, 1.8m input lead
- 2.1mm DC jack terminated

PS5000SM



Surveillance HDDs: Built for surveillance applications and optimised for 24/7 use cycles.



Seagate SkyHawk™ Surveillance HDDs

- RhinoCo utilises surveillance grade hard disk drives in all surveillance systems and surveillance kits
- Available in 1TB, 2TB, 3TB, 4TB, 6TB 8TB and 10TB models
- Optimised for DVRs & NVRs, SkyHawk™ surveillance drives are tuned for 24x7 workloads in capacities up to 10TB. Equipped with enhanced ImagePerfect™ firmware, SkyHawk helps to minimise dropped frames and downtime with a workload rating 3x that of a desktop drive.
- 180TB/year workload, support for up to 64 cameras per drive, low power consumption drives

Install faster & deliver professional results with our range of CCTV mounts & brackets.



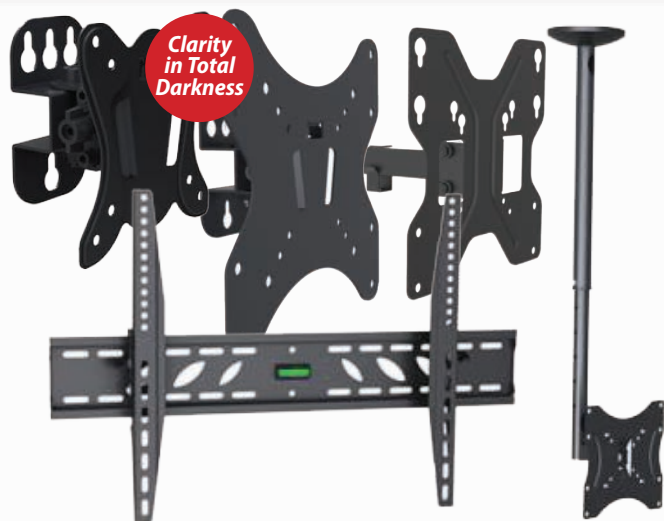
SECURVIEW

Make your installations shine

Add value, deliver reliability & achieve impressive results with our UPS & display range.



Ask us for
4K Monitors
& TVs



SECURVIEW

Professional LCD Mounting Solutions

- **13~30" Wall Mount Bracket:** VESA 75/100, 15kg load capacity, $\pm 8^\circ$ tilt, 73mm min. from wall
- **17~42" Wall Mount Bracket:** VESA 75/100/130/200 x100/200, 20kg load capacity, $\pm 8^\circ$ tilt, 65mm from wall
- **17~42" Tilt/Swivel Arm Wall Mount Bracket:** VESA 75/100/200x100/200, 30kg load, $\pm 15^\circ$ tilt, $\pm 90^\circ$ arm swivel rotation, 68mm min. from wall (190mm max.)
- **23~42" Tilt/Swivel Ceiling Mount Bracket:** VESA 50/75/100/200x100/200, 35kg load, 15° tilt, $\pm 90^\circ$ arm swivel rotation, 600mm min. from ceiling (850mm max.)
- **37~70" Wall Mount Bracket:** VESA up to 600x400, 50kg load, 10° tilt angle, 43mm min. from wall

LCDBKT-A15T

LCDBKT-A20T

LCDBKT-A30TS

LCDBKT-A35C

LCDBKT-A50T

SECURVIEW

600VA Line Interactive UPS

- 360W / 600VA, 2 sockets, 0.6 power factor, 2 ~ 6ms transfer delay, 1 x 12V 7Ah battery, 15min backup (120W load), power protection & fault alarm alerts

UPS-A600-L



SECURVIEW

1500VA Line Interactive UPS

- 900W / 1500VA, 4 sockets, 0.6 power factor, 2 ~ 6ms transfer delay, 2 x 12V 9Ah battery, 30min backup (120W load), power protection & fault alarm alerts

UPS-A1500-L



SECURVIEW

1000VA Smart Online UPS

- 900W / 1000VA, 3 sockets, 0.9 power factor, instant 0ms transfer delay, 2 x 12V 9Ah battery, 45min backup (120W load), LCD display
- Improved stability over line interactive models; warning alarm, overload/charge, ESDs

UPS-B1000-O



ENSA™

Achieve more using less

With the IPART accepted for NSW ESS range of floods, high bays, battens & more.



ENSA

LFL-B Series: Performance LED Floods

- In 20W, 30W, 50W, 70W, 100W, 150W and 200W models
- Exceptional luminous efficacy (+100lm/W), 50,000hrs lifespan
- Range is accepted for use in the NSW Energy Savings Scheme
- High performance in a slimline, aluminium, IP65 rated chassis
- Rectangular 100° beam angle and >80 colour rendering index
- In warm & cool white (3000K/5000K), pre-terminated cable; electrician not required; perfect for residential, commercial and industrial lighting

LFL-B20-C/W
(20W, 2200lm)

LFL-B30-C/W
(30W, 3300lm)

LFL-B50-C/W
(50W, 5500lm)

LFL-B70-C/W
(70W, 7700lm)

LFL-B100-C/W
(100W, 11000lm)

LFL-B150-C/W
(150W, 16500lm)

LFL-B200-C/W
(200W, 22000lm)

ENSA™

Professional LED High Bay Lighting

LHB-A Series (Traditional Style High Bay)

- In 120W or 200W, in standard or 0~10V driver*
- Accepted for use in NSW Energy Saving Scheme
- +100lm/W with >80 colour rendering index
- Exceptional 50,000hrs rated LED lifespan
- Available in 6500K cool white colour temperature
- 60° aluminium reflector, eyelet & 3-pin AC plug
- **Add an ENSA-MS5 high bay sensor switch (right) to compound your energy savings**
- Features customisable ambient light sensing, microwave motion detection & on-time delay
- Detection range: Ø16m at 15m height

LHB-A120-CW
(120W, 12500lm)

LHB-A200-CW
(200W, 20000lm)

ENSA-MS5
(Sensor switch)



LED Sensor Batten Lighting: IP65 weather rated battens in sensor & emergency models.

ENSA™

S2 Series: IP65 LED Battens

- Accepted for use in NSW Energy Saving Scheme
- In 18W (1600lm) & 36W (3000lm) models
- Light & microwave motion sensor control light
- Adjustable 2 stage dim (100% -> Dim -> Off)
- Wide 120° beam angle, 35,000hrs LED lifespan
- IP65 rated weather resistant enclosure

LEDBT18WS2
(18W, 600mm)

LEDBT36WS2
(36W, 1200mm)

ENSA™

SE Series: Emergency LED Battens

- Accepted for use in NSW Energy Saving Scheme
- In 18W (1600lm) & 36W (3000lm) models
- Light & microwave motion sensor control light
- 2hrs up-time backup battery, AS2293.3 app.
- Wide 120° beam angle, 35,000hrs LED lifespan
- IP65 rated, set on-time & motion sensitivity

LEDBT18WSE
(18W, 600mm)

LEDBT36WSE
(36W, 1200mm)



Canopy Lighting: NSW ESS accepted lighting for garages, workshops & petrol stations.

ENSA™

Professional LED Canopy Lighting

- Approved for use in the NSW Energy Saving Scheme
- High efficiency +100lm/W, available in natural white 4500K
- 90° x 90° square beam angle for even light distribution
- 30,000 hours rated LED lifespan, <3% decay after 6,000hrs
- IP65 rated dust and weather resistant housing
- Canopy light includes kits for surface and recessed mounts:
Surface housing: 320 x 320mm footprint
Recessed housing: 400 x 400mm / Cutout: 320 x 320mm
- Ideal in garages, workshops & petrol stations

LCL-B150-N
(150W, 15500lm)



Panel Lighting: Re-energise office spaces with low glare panel lights in 36W and 48W.

ENSA™

1200 x 300mm Low Glare LED Panel Lighting

- Low Unified Glare Rating for high productivity work lighting
- Range is accepted for use in the NSW Energy Savings Scheme
- High efficiency 90lm/W, in 6000K cool white colour temperature
- Wide 110° beam angle, high >80 CRI, 30,000hrs rated lifespan
- Recessed / T-bar compatible; avail. with surface or hanging mount
- Ideal for replacing twin fluorescent battens in troffers/tile ceilings

LPL-A36-CW
(36W, 3300lm)

LPL-A48-CW
(48W, 4300lm)

LPL-AH
(Hanging mount)

LPL-AS
(Surface mount)



PROFESSIONAL LED LIGHTING

High Bay Lighting: Efficient industrial LED lighting for mounting up to 15m in height.

ENSA™

Professional LED High Bay Lighting

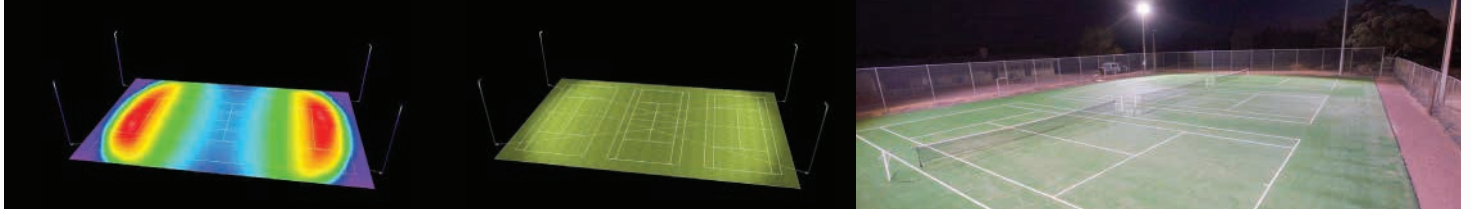
LHB-C Series (UFO Style High Bay)

- Available in 100W, 150W or 200W models
- Incredible 130lm/W luminous efficacy, >80 CRI
- Exceptional 50,000hrs rated LED lifespan
- Compact design with IP65 weather rated body
- Available in 5500K cool white colour temperature
- 60° beam angle, metal eyelet and 3-pin AC plug
- Interchangeable high bay lens (90°, 120°)



Do you have a large scale lighting project in the works? We can help.

Ask us about project assistance & lighting simulations for large and complex lighting installations.



LED Oyster Lighting: Smart oyster lighting in standard, sensor & emergency models.

ENSA™

Standard & Intelligent LED Oyster Lighting

- In standard, sensor, and sensor+battery backup models
- Models feature 120° beam angle & 30,000hrs rated lifespan
- Each model is available in cool & warm white colour temps.
- **Standard model:** 16W, 1200lm, no sensors or battery, features vandal and weather resistant IP66/IK10 body
- **Sensor model:** 16W, 1200lm, microwave motion sensor, on-time delay & daylight sensor, IP44 rated body
- **Sensor+Battery model:** 10W, 700lm, microwave motion sensor, on-time delay & daylight sensor, 1 x 7.2V 1800mAh NiMH battery, IP44 rated body



LED Tube Lighting: Standard and sensor LED tubes for easy upgrade light installations.

ENSA™

T8 Standard LED Tubes

- In 2ft (600mm), 4ft (1200mm) & 5ft (1500mm) models
- 100+lm/W efficacy, LED lifespan up to 30,000 hours
- Light weight, safe, full polycarbonate tube design
- Frosted diffuser for soft light eliminates LED glare
- Single ended AC input, incl. LED starter

LTU-A9-CW (9W, 900lm) LTU-A18-CW (18W, 1800lm) LTU-A22-CW (22W, 2200lm)



ENSA™

T8 Motion Sensor LED Tubes

- Compound energy savings with LED sensor tubes
- Available in 2ft (600mm) and 4ft (1200mm) models
- 80+lm/W efficacy, LED lifespan up to 50,000 hours
- 8m radius PIR sensor, 120° beam angle, >80 CRI
- Light features 60 sec on-time delay after last detected motion, then dims to 30% brightness
- Single ended AC input, incl. LED starter

LTU-C9-CS (9W, 750lm) LTU-C18-CS (18W, 1800lm)



ENSA™

Make every light a smart light.

Deliver greater energy savings to your lighting installs with energy sensor switches.



ENSA™

Energy Saving Sensor Switches

- PIR, microwave & dusk/dawn switches
- Available in IP65 weather rated models
- Adjustable daylight sensing threshold, motion sensor sensitivity & on-time delay
- Wide range of mount types
- 3 year warranty across the range



- 12m 180°
- Wall mount
- PIR detection
- IP65 rated
- 4m x 20m
- Corridors
- PIR detection
- IP20 rated
- Ø6m 360°
- Recessed
- PIR detection
- IP20 rated
- Ø20m 360°
- Ceiling mount
- PIR detection
- IP65 rated

ENSA-PS1

ENSA-PS2

ENSA-PS3

ENSA-PS4



- Ø8m 360°
- Concealed
- Microwave
- Indoor only
- 15m 180°
- Wall mount
- Microwave
- IP65 rated
- Ø16m 360°
- Ceiling mount
- Microwave
- IP20 rated

ENSA-MS1

ENSA-MS6

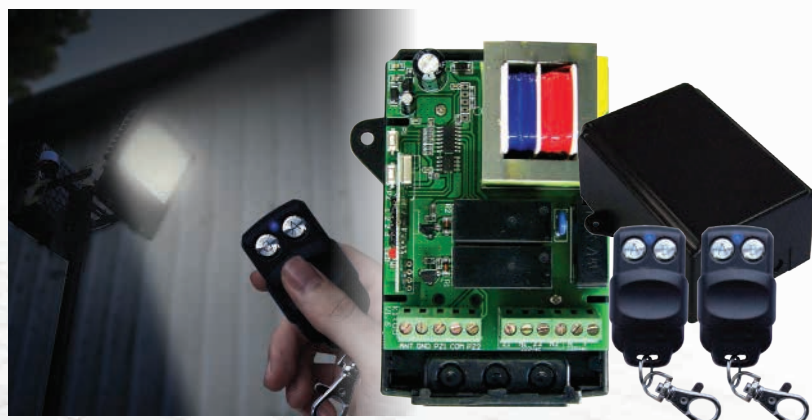
ENSA-MS2



- 2 ~ 100 Lux
- DIN rail/probe
- Dusk/dawn
- IP65 rated
- 5 ~ 50 Lux
- Wall clip
- Dusk/dawn
- IP44 rated

ENSA-LC3

ENSA-LC1



ENSA™

2 Channel Mains Voltage RF Receiver

- Remote control 240V devices, such as LED lighting, for flexibility, security & energy savings
- 240VAC 433.92MHz fixed code receiver with up to 100m RF range (line of sight), includes 2 wireless remote keyfobs
- Integrate wireless PIR & reed switches for auto-activation
- 2 programmable relay outputs (latched or timed)
- Add up to 128 remotes or universal transmitters
- IP55 weather/dust resistant, designed for sheltered mounting

ENSA-RS1

It is our mission to support & inspire your installation business.



Apply for a trade login

- View pricing and order online
- Download our latest catalogues
- View the latest info on our website
- Get started at www.rhino.com.au



Subscribe to email specials

- Receive weekly email specials with the latest info & deals from RhinoCo
- Receive limited time online deals
- Contact us at sales@rhino.com.au



Connect with us on social

- See news from RhinoCo as it happens including special offers and events
- Follow us @RhinoCoAu on YouTube, Facebook, Twitter, Instagram & LinkedIn



Call, email, order online, visit our four Sydney stores or purchase from a Reseller near you



(02) 9671 6711 | sales@rhino.com.au | www.rhino.com.au



McGraths Hill

Head Office & Warehouse
9 Hannabus Place
McGraths Hill, NSW

Haberfield

Showroom & Sales Office
223-225 Ramsay Street
Haberfield, NSW

Villawood

Showroom & Sales Office
63-69 Middleton Road
Villawood, NSW

Brookvale

Showroom & Sales Office
142 Old Pittwater Road
Brookvale, NSW

NEW SOUTH WALES / ACT

Bitek Canberra

11 Sheppard St,
Hume, ACT 2620
(02) 6260 1874
sales@bitek.com.au
www.bitek.com.au

Bitek Sydney

6 / 8 Victoria Ave,
Castle Hill, NSW 2154
(02) 9659 2272
sales@bitek.com.au
www.bitek.com.au

Mi Technologies

1/68 Roberts Ave,
Mortdale, NSW 2223
(02) 9188 4333
mail@mitechtechnologies.com.au
www.mitechtechnologies.com.au

Rivsec Pty Ltd

11 Berry St,
Wagga Wagga, NSW 2650
1300 093 711
sales@rivsec.com.au

WES Australia

84-90 Parramatta Rd,
Summer Hill, NSW 2130
(02) 8014 3897
sales@wes.net.au
www.wes.com.au

VICTORIA

Bendigo Electronics

167-169 Lyttleton Tce,
Bendigo, VIC 3550
(03) 5444 4044
info@bendigoelectronics.com.au
www.bendigoelectronics.com.au

Bitek Melbourne

7 / 1 Culverlands St,
West Heidelberg, VIC 3081
(03) 9456 9222
sales@bitek.com.au
www.bitek.com.au

Joinfinity

Unit 7, 35-37 Dunlop Rd,
Mulgrave, VIC 3170
(03) 9540 0708
info@joinfinity.com.au
www.joincc.com.au

SOUTH AUSTRALIA

Bitek Adelaide

Unit 3 / 4 Armiger Ct,
Holden Hill, SA 5088
(08) 8395 4111
sales@bitek.com.au
www.bitek.com.au

Australian Security Supplies

2 Rosslyn St,
Mile End, SA 5031
(08) 8354 0288
sales@ass.com.au
www.ass.com.au

QUEENSLAND

Customline Computers

35 Grace St,
Innisfail, QLD 4860
(07) 4061 8894
sales@customline-computers.com
www.customline-computers.com

Hub Technology

Suite 1, 154 Lytton Rd,
Bulimba, QLD 4171
(07) 3188 5455
sales@hubtechsec.com.au
www.hubtechsec.com.au

TradeZone

131 Millaroo Dr,
Helensvale, QLD 4212
1800 092 778
customerservice@tradezone.com.au
www.tradezone.com.au

WESTERN AUSTRALIA

Redbox Agencies

Unit 1 / 30 Walters Dr,
Osborne Park, WA 6017
(08) 9242 7355
sales@redboxagencies.com.au
www.redboxagencies.com.au

* Offers valid until 31st October 2018, while stocks last. Prices and product availability subject to change; all prices exclude GST. Errors & omissions excepted. RhinoCo Resellers price, stock availability, and trading terms may vary from RhinoCo Technology. Resellers may special order stock in, however RhinoCo cannot guarantee the same prices, product availability or trading terms when purchasing from Resellers. RhinoCo recommends checking Reseller stock availability and pricing in advance. For full terms and conditions, visit: <https://www.rhinoco.com.au/legal/terms>