

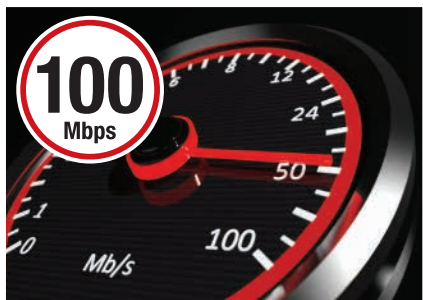


# Fast surveillance networks.

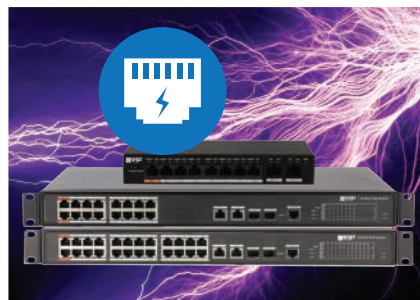
**VSPOE-SWA Series: Available in 8, 16 & 24 port switches, midspan & extender**

The VSPOE- SWA series comprises 10/100Mbps PoE switches in 8, 16 & 24 port configurations with Hi-PoE support as well as easy-to-use PoE midspan/extender combination. Enjoy reliability & speed, perfect for surveillance networks.

- 100Mbps PoE downlink & Gigabit uplink ports
- PoE, PoE+ and Hi-PoE support for up to 60W PoE
- 300m max transmission via midspan and extender
- Port rate control, VLAN, security, PoE output & more
- Easy switch L2 management (*SWA 16 & 24 port only*)
- Supports Web management
- PoE midspan/extender Hi-PoE support
- DIN mountable for profesional installations



**Up to 100Mbps PoE+ Downlink Ports**






**PoE, PoE+ & Hi-PoE Support**



**Gigabit (1000M) Uplink Ports**

## PoE & Fibre Switches | VSPOE Series Specifications

	Model	VSPOE-SWA8G		VSPOE-SWA16		VSPOE-SWA24	
Series	Product Image						
	Series Name	VSPOE-SWA Series Power Over Ethernet Switches with Hi-PoE Support					
Specifications	Ethernet Ports	2 x 10/100/1000 Base-T 8 x 10/100 Base-T (PoE power supply ports)		2 x 10/100/1000 Base-T (combo port) 2 x 1000 Base-X (combo port) 16 x 10/100 Base-T (PoE power supply ports)		2 x 10/100/1000 Base-T (combo port) 2 x 1000 Base-X (combo port) 24 x 10/100 Base-T (PoE power supply ports)	
	Network Management	Unmanaged		L2 Management			
	Switch Power Load	Port 1: ≤60W Port 2 ~ 8: ≤30W	Total: ≤96W	Port 1~2: ≤60W Port 3~16: ≤30W	Total: ≤240W	Port 1 ~ 2: ≤60W Port 3 ~ 24: ≤30W	Total: ≤360W
	PoE Protocol	PoE (IEEE802.3af) / PoE+ (IEEE802.3at) / Hi-PoE					
	Switching Capacity	5.6Gbps		8.8Gbps		8.8Gbps	
	Packet Forwarding Rate	4.17Mbps		5.36Mbps		6.5Mbps	
	Packet Buffer Memory	4Mb					
	MAC Table Size	16K		4K			
	Exchange Mode	Store & forward					
	Operating Environment	-10° ~ 55°C / RH90% (max)					
	Mounting Options	N/A		Rackmount Tabs			
	Weight	0.49kg		3.51kg		3.51kg	
	Dimensions	190 x 100 x 42mm		440 x 300 x 44mm		440 x 300 x 44mm	
	PoE Budget	N / A		Total≤240W		Total≤360W	
	MAC Table			8K		4K	
	VLAN			802.1Q Standard VLAN		N/A	
	NTP			N/A		Support	
	Spanning Tree			STP / RSTP		N / A	
	Port Aggregation			Manual aggregation/LACP		Static link aggregation LACP protocol	
	Mirroring			Many-to-one port mirroring			
	DHCP			Support DHCP-Client / server Support DHCP-Snooping		Support DHCP-Client	
	Long Distance Mode			N / A		Power & Data” transmission distance up to 250m	
	Flow Control			Half-duplex based on back pressure type control; Full duplex based on PAUSE frame		Half-duplex based on back pressure type control; Full duplex based on PAUSE frame	
	Security Features			Users management, SSH, HTTPS, SNMP v1/v2/v3, ROMN, ACL, IP source guard, ARP inspection, 802.1x, loop protection		IP+MAC binding based on port; IEEE802.1x port authentication	
	System Maintenance			Support the configuration file upload/download Support the updated packet upload System log		One-key recovery Support the updated packet upload System log	
	Quality of Service (QoS)			Support QoS base on CoS/DPL/PCP/DEI Each port support 8 output queue Support port shaping Support port tag remarking Support QoS base on DSCP		High and low priority, WRR 802.1P, DSCP Support priority according to protocol	
	Network Management			WEB(http protocol), serial, SNMP		WEB(http and https protocol) Support SNMP V1/V2C/V3	
	PoE Management			N / A		PoE setting (real-time port consumption) PoE event statistics Green PoE	

Your local VIP Vision™ IP solutions professional: