



Starlight Camera

AI People & Vehicle Detection

Intelligent AI auto-tracking

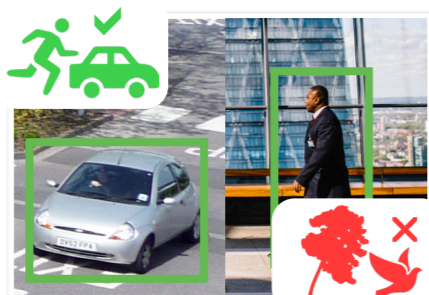
Pro AI Series: perimeter protection PTZ domes in 2.0MP, 4.0MP & 8.0MP

Offer a versatile surveillance experience and ensure all areas are covered with up to 32x optical zoom, auto-tracking and fast endless 360° panning. Experience impressive AI powered video analytics and filter false alarms with AI face detection and AI Perimeter Protection technology, providing meaningful video event notifications in real-time.

- Stream up to 8.0MP (3840 x 2160) at 25fps
- Up to 32x optical zoom lens (61.6°~2.1 viewing angles)
- Low light colour performance at 0.005lx; 150m IR
- Endless 360° panning and -15° ~ 90° tilt adjustable
- MicroSD card slot for edge recording applications
- Perimeter Protection to identify people & vehicles
- Combine Perimeter Protection with Tripwire/Intrusion to prevent false alarms, all using any VIP Vision NVR
- Power by PoE+ (802.3at) or 24VDC (PSU included)
- IP67 weather rated, lightweight dome housing



Up to 4K Ultra HD Resolution



Smart Person & Vehicle Detection



Up to 32x Lossless Optical Zoom

Specifications	2.0MP 25x Zoom PTZ with AI	4.0MP 32x Zoom PTZ with AI	8.0MP 25x Zoom PTZ with AI
Ordering Information	VSIPTZ-2IRP-I2	VSIPTZ-4IRP-I2	VSIPTZ-8IRP-I2
Image Sensor	1/2.8" 2.0MP Starvis™ CMOS	1/2.8" 4.0MP Starvis™ CMOS	1/1.8" 8.0MP Starvis™ CMOS
Effective Pixels	1920 (H) x 1080 (V)	2560 (H) x 1440 (V)	3840 (H) x 2160 (V)
RAM / ROM	1GB / 4GB		
Min Illumination	0.005 Lux/F1.6 (Colour), 0.0005 Lux/ F1.6 (B/W)/, 0 Lux (IR Light On)	0.005 Lux/F1.35 (Colour), 0.0005 Lux/ F1.35 (B/W)/, 0 Lux (IR Light On)	0.005 Lux/F1.6 (Colour), 0.0005 Lux/ F1.6 (B/W)/, 0 Lux (IR Light On)
Infrared System	4 x Infrared LED, 150m range, Zoom Prio/Auto/Manual/Smart IR On/Off control		
Lens / Iris	4.8mm ~ 120mm F1.6 ~ F3.5 Motorised Lens	4.8mm ~ 154mm F1.35~ F4.4 Motorised Lens	5.4mm ~ 135mm F1.6 ~ F4.0 Motorised Lens
Field of View	58.7° ~ 2.8° (H), 33.2° ~ 1.5° (V), 67.5 ~ 3.2° (D) (25x Optical Zoom)	55.81° ~ 2.37° (H), 31.92° ~ 1.34° (V), 63.71° ~ 2.71° (D) (32x Optical Zoom)	61.6° ~ 3.6° (H), 35.7° ~ 2° (V), 66.6 ~ 4° (D) (25x Optical Zoom)
Focus	Auto/Semi-Auto/Manual / 0.1m ~ 1.5m Min. Focus Distance		Auto/Semi-Auto/Manual / 0.5m ~ 2m Min. Focus Distance
DORI			
Detect (25px/m)	1614m	2124m	2700m
Observe (63px/m)	646m	839m	1066m
Recognise (125px/m)	323m	425m	540m
Identify (250px/m)	161m	212m	270m
PTZ	Pan: 0° ~ 360° (endless) / Tilt: -15° ~ 90° / Auto Flip 180°		
PTZ Speed	Preset: Pan: 400°/s; Tilt: 300°/s Manual: Pan: 300°/s; Tilt: 200°/s		
Modes / Presets	Up to 300 presets / 5 Pattern, 8 Tour, 5 scanning, Auto Pan, Auto Scan		
Start-up Action	Auto-restore to previous PTZ/lens status		
Auto Tracking	Support		
Resolution	1080p (1920 x 1080) to CIF (352 x 288)	4.0MP (2560 x 1440) to CIF (352 x 288)	8.0MP (3840 x 2160) to CIF (352 x 288)
Frame Rate	Main: 1080p (1 ~ 25fps) Sub: 1080p (1 ~ 25fps) Third: 1080p (1 ~ 25fps)	4.0MP (1 ~ 25fps) D1 (1 ~ 25fps) 720p (1 ~ 25fps)	8.0MP (1 ~ 25fps) 1080p (1 ~ 25fps)
Video Compression	H.265+ / H.265 / H.264+ / H.264 / MJPEG		H.265+ / H.265 / H.264+ / H.264 / H.264H / MJPEG
Bit Rate	H.265/H.264: 3 kbps~20480 kbps		H.265/H.264: 51 kbps~16384 kbps
Bit Rate Control	Constant bit rate (CBR) / Variable bit rate (VBR)		
Day/Night	Auto (ICR) / Color / B&W		
Lighting Compensation	BLC / HLC / WDR (120dB)		
White Balance	Auto / Indoor / Outdoor / Tracking / Manual / Sodium lamp / Natural light / Street lamp		
Gain Control	Auto / Manual		
Noise Reduction	2D / 3D DNR		
Picture Control	Flip 0°/180°		
Intelligent Functions	Abandoned/Missing Object, Motion Detection, Region of Interest, Electronic Image Stabilisation, Privacy Masking (24 zones), Defog		
Perimeter Protection	Tripwire & Intrusion (Add recognition of humans & vehicles)		
Intelligent Search	Via NVR Smart Search, Search tripwire/intrusion events by people or vehicle		
SMD+	Filter motion detection alarms, recognises humans and vehicles from other moving objects		
Metadata	Supports human, motor vehicles and non motor vehicle search. Supports face image capture and footage search by face image & facial attributes		
Network	Ethernet RJ-45 (10/100Base-T)		
Protocol	IPv4; IPv6; HTTP; HTTPS; 802.1x; Qos; FTP; SMTP; UPnP; SNMPv1/v2c/v3 (MIB-2); DNS; DDNS; NTP; RTSP; RTP; TCP; UDP; IGMP; ICMP; DHCP; PPPoE; ARP; RTPC		
Streaming Method	Unicast / Multicast		
Max. User Access	20 Users		
Audio Interface	1 Input / 1 Output / Compression: G.711A; G.711Mu; G.726; AAC; G.722.1; G.723; G.729; PCM; MPEG2-Layer2		
Alarm Interface	2 Inputs / 1 Output		
RS485	N/A		
Edge Storage	FTP; Micro SD card (256G); P2P		
Interoperability	ONVIF Profile S&G&T; CGI		
Power Supply	24VDC/3A (±25%) / PoE+ (802.3at)		
Power Consumption	<13W / <22W (IR on)	<13W / <22W (IR on)	<12W / <21W (IR on)
Operating Conditions	<-40° ~ +70° C / Less than 95% RH		
Ingress Protection	IP67		
Vandal Resistance	IK10		
Surge Protection	TVS 6000V Lightning Protection / Surge Protection		
Housing	Metal		
Dimensions	Ø190mm x 332mm		
Net Weight	4.7kg		

Application						
Included Accessories	Wall Mount	Pole Mount	Ceiling Mount	Parapet Mount		
VSBKTB305W (Wall Mount Bracket) + 24VAC/3A PSU	VSBKTB305W	VSBKTB305W + VSBKTA120	VSBKTB305W + VSBKTA140	VSBKTB305W + VSBKTA150	VSBKTA111 + VSBKTB300C + VSBKTA150	VSBKTA111 + VSBKTB300C + (+ VSBKTA112/13 optional extension) + VSBKTB3035 +

Your local VIP Vision™ IP solutions professional: