

- AI People & Vehicle Detection
- Intruder Deterrence
- Alarm Light & Spotlight
- 24/7 Colour

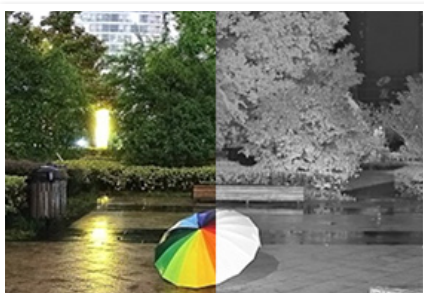


Instant intruder deterrence.

Professional AI Series: Fixed AI deterrence turrets in 5.0MP & 8.0MP

Featuring smart motion detection, the Professional AI Series can distinguish between people, vehicles & other motion to filter out false alarms. This camera series includes a loud siren & flashing strobe lights that activate in response to alarm events (such as motion detection), deterring intruders and preventing crimes before they happen.

- Stream up to 8.0MP (3840 x 2160) at 25fps
- Activates spotlight, flashing light & siren, and switches from IR to colour footage in response to alarm events
- 24/7 Colour low light footage as low as 0.0015lx
- Up to 30m infrared, BLC/HLC & true WDR (120dB)
- Intelligent AI detection to identify people & vehicles
- Smart Motion Detection (SMD+) & Perimeter Protection to prevent false alarms, using VIP Vision NVRs
- 3D digital noise reduction & auto white balance
- IP67 weather rated housing for outdoor use



24/7 Colour Night Performance



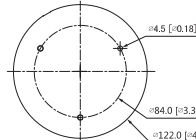
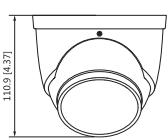
Built-in Siren & Flashing Light



Smart Person & Vehicle Detection

Specifications		5.0MP Fixed AI Deterrence Turret	8.0MP Fixed AI Deterrence Turret	
Ordering Information		VSIPP-5DG-ID2	VSIPP-8DG-ID2	
Camera	Ordering Information	VSIPP-5DG-ID2	VSIPP-8DG-ID2	
	Image Sensor	1/2.7" 5.0MP Progressive Scan CMOS	1/2.8" 8.0MP Progressive Scan CMOS	
	Effective Pixels	2592 (H) x 1944 (V)	3840 (H) x 2160 (V)	
	RAM / ROM	512MB / 128MB	512MB / 128MB	
	Min Illumination	0.003 Lux/F1.0 (Color)	0.004 Lux/F1.0 (Color)	
	Electronic Shutter	1/3 ~ 1/100,000s		
	S/N Ratio	> 56dB		
	Infrared System	1 x Infrared LED, 30m range, Auto/manual on/off control		
	LED Illumination	1 x Spotlight (Warm White), 1 x Red & Blue Alarm Light		
	Lens / Iris	2.8mm F1.0 Fixed Lens		
Lens	Field of View	Horizontal: 97°, Vertical: 70°, Diagonal: 128°	Horizontal: 106°, Vertical: 55°, Diagonal: 125°	
	Focus	Auto Focus / 1.5m Min. Focus Distance		
	Focus	Auto Focus / 2m Min. Focus Distance		
DORI	Detect (25px/m)	66m	91m	
	Observe (63px/m)	26m	36m	
	Recognise (125px/m)	13m	18m	
	Identify (250px/m)	7m	9m	
	Resolution	5.0MP (2592 x 1944) to CIF (352 x 288)	8.0MP (3840 x 2160) to CIF (352 x 288)	
Video	Frame Rate	Main	5.0MP (1 ~ 20fps)	8.0MP (1 ~ 25fps)
		Sub	704 x 576 (1 ~ 25fps)	704 x 576 (1 ~ 25fps)
		Third	1080p (1 ~ 25fps)	1080p (1 ~ 25fps)
Video Compression	H.265+ / H.265 / H.264+ / H.264 / H.264B / MJPEG			
Bit Rate	H.265: 3 ~ 20480Kbps / H.264: 3 ~ 20480Kbps			
Bit Rate Control	Constant bit rate (CBR) / Variable bit rate (VBR)			
Day/Night	Auto (ICR) / Color / B&W			
Lighting Compensation	BLC / HLC / WDR (120dB)			
Smart Scene Adaptive	SSA			
White Balance	Auto / Natural / Street Lamp / Outdoor / Manual			
Gain Control	Auto / Manual			
Noise Reduction	3D DNR			
Picture Control	Mirror / Flip (0°, 90°, 180°, 270°)			
IVS	Video Functions	Motion Detection (4 zones), Region of Interest (4 zones), Privacy Masking (4 zones), Smart Illumination, Defog, Object Abandoned / Missing, Heat Map Event Triggers: Motion Detection, Perimeter Protection, Video Tampering, Scene Changing, Network Disconnection, IP Address Conflict, Illegal Access, Storage Anomaly		
	AI Functions	Perimeter Protection: People and vehicle detection using tripwire or intrusion rules Loitering detection: People gathering and parking detection		
	Intelligent search	Search people or vehicle detection events (Perimeter Protection)		
Network	Ethernet	RJ-45 (10/100Base-T)		
	Protocol	IPv4; IPv6; HTTP; TCP; UDP; ARP; RTP; RTSP; RTCP; RTMP; SMTP; FTP; SFTP; DHCP; DNS; DDNS; QoS; UPnP; NTP; Multicast; ICMP; IGMP; NFS; SAMBA; PPPoE; SNMP		
	Streaming Method	Unicast / Multicast		
	Max. User Access	20 Users (Total bandwidth: 72MB)		
Interface	Video Interface	N/A		
	Audio Interface	Built-in Mic & Built-in Speaker / Audio Compression - PCM; G.711a; G.711Mu; G.726; G.723		
	Alarm Interface	1 channel in: 5mA 3-5VDC / 1 channel out: 300mA 12VDC		
	RS485	N/A		
	Edge Storage	MicroSD Card (up to 256GB) / NAS / FTP / SFTP		
	Interoperability	ONVIF (Profile S, Profile G, Profile T) / P2P / CGI / Milestone		
Environmental	Power Supply	12VDC / PoE (802.3af)		
	Power Consumption	Basic: 1.86W (12VDC) / 4.18W (PoE) / Max (IR & LED on): 6.5W (12VDC) / 8.8W (PoE) Basic: 2.9 W (12VDC) / 5W (PoE) / Max (IR & LED on): 7.8W (12VDC) / 9.6W (PoE)		
	Operating Conditions	-40°C ~ +60°C / ≤95% RH		
	Ingress Protection	IP67		
	Vandal Resistance	N/A		
	Housing	Metal		
	Pan/Tilt/Rotation	Pan: 0° ~ 360°, Tilt: 0° ~ 78°, Rotation: 0° ~ 360°		
	Dimensions	Ø122mm x 111mm		
Net Weight	0.75kg			

Application



Junction Box		Wall Mount
VSBKTA137		VSBKTB205W
Corner Mount	Pole Mount	Ceiling Mount
VSBKTB205W + VSBKTA151	VSBKTB205W + VSBKTA152E	VSBKTA106 + VSBKTB220C

Your local VIP Vision™ IP solutions professional: