



Compact & powerful AI PTZ.

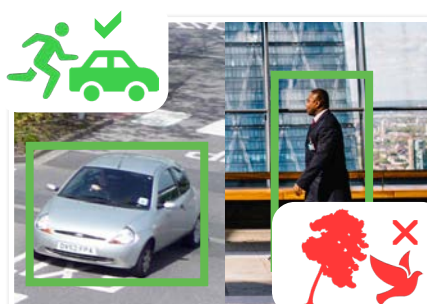
PTZ AI Series: 4x zoom PTZ dome with AI powered video analytics

Small in size but big on features, the PTZ AI Dome combines the flexibility and coverage of PTZ with the power of smart AI technology. The PTZ AI Series identifies people & vehicles using machine learning, to reduce false motion detection alerts and provide meaningful video event notifications in real-time.

- Stream up to 4.0MP (2560 x 1440) at 25fps
- 4x optical zoom lens (31.6° ~ 96.9° H viewing angles)
- Low light colour performance at 0.005lx; 15m IR
- Endless 360° panning with tilt adjust; flip 180°
- Intelligent AI detection to identify people & vehicles
- Smart Motion Detection (SMD+) & Perimeter Protection to prevent false alarms, using VIP Vision NVRs
- MicroSD card slot for recording up to 256GB
- Supports Power over Ethernet (802.3af)
- IP66 weather & IK08 vandal rated resistant housing



Up to 4x Optical Zoom

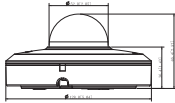


Smart Person & Vehicle Detection



Superb Low Light Performance

Specifications		4.0MP 4x Zoom AI PTZ Dome				
Ordering Information		VSIPTZ-4IRM-I : Standard				
Camera	Image Sensor	1/2.8" 4.0MP Progressive Scan CMOS				
	Effective Pixels	2560 (H) x 1440 (V)				
	RAM / ROM	1GB / 4GB				
	Min Illumination	0.005 Lux/F1.8 (Color), 0.0005 Lux/ F1.8 (B/W), 0 Lux (IR on)				
	S/N Ratio	N/A				
Lens	Infrared System	3 x Infrared LED, 15m range, Auto/manual on/off control				
	Lens / Iris	2.8 ~ 12mm F1.8 ~ F2.7 Motorised Lens with Auto Iris				
	Field of View	Horizontal: 32~97°, Vertical: 18°~51° (4x Optical Zoom)				
DORI	Focus	Auto/Manual / 0.2m Min. Focus Distance				
	Detect (25px/m)	147m				
	Observe (63px/m)	59m				
	Recognise (125px/m)	29m				
	Identify (250px/m)	15m				
PTZ	Pan / Tilt Range	Pan: 0 ~ 355° / Tilt: 5 ~ 90°				
	PTZ Speed	Preset : Pan: 80°/s; Tilt: 40°/s Manual : Pan: 70°/s; Tilt: 30°/s				
	Modes / Presets	Up to 300 presets / 8 tour				
	Start-up Action	Auto-restore to previous PTZ/lens status				
	Auto Tracking	N/A				
Video	Resolution	4.0MP (2560 x 1440) to CIF(352 x 288)				
	Frame Rate	Main	4.0MP (1 ~ 25fps)			
		Sub	D1 (1 ~ 25fps)			
		Third	D1 (1 ~ 25fps) / 720p (1 ~ 25fps)			
	Video Compression	H.265; H.264 Baseline Profile; H.264 Main Profile; H.264 High Profile; MJPEG (Sub Stream); H.265+; H.264+				
	Bit Rate	H.264 / H.265 / MJPEG: 3 ~ 20480Kbps				
	Bit Rate Control	Constant bit rate (CBR) / Variable bit rate (VBR)				
	Day/Night	Auto (ICR) / Color / B&W				
	Lighting Compensation	BLC / HLC / WDR (120dB)				
	White Balance	Auto / Indoor / Outdoor / Track / Manual / Sodium Lamp / Natural Light / Street Lamp				
IVS	Gain Control	Auto / Manual				
	Noise Reduction	2D / 3D				
	Picture Control	Flip 180°				
	Video Functions	Abandoned/Missing Object, Motion Detection, Region of Interest, Electronic Image Stabilisation, Privacy Masking (24 zones), Defog				
	AI Functions	Smart Motion Detection (SMD+) : People and vehicle detection using motion detection Perimeter Protection : People and vehicle detection using tripwire or intrusion rules Other : Fast Moving Detection, Loitering Detection, Parking & Gathering Detection				
Network	People Counting	Supports Line Crossing/Region/Queuing People Counting, Report Generation				
	Event Trigger	Motion Detection, Video Tampering, Scene Changing, Network Disconnection, IP Address Conflict, Illegal Access, Storage Anomaly				
	Intelligent Search	Search people or vehicle detection events (SMD+, Perimeter Protection)				
	Ethernet	RJ-45 (10Base-T/100Base-TX)				
Interface	Protocol	IPv4; IPv6; HTTP; HTTPS; 802.1x; Qos; FTP; SMTP; UPnP; SNMPv1/v2c/v3(MIB-2); DNS; DDNS; NTP; RTSP; RTP; TCP; UDP; IGMP; ICMP; DHCP; PPPoE; ARP; RTCP				
	Streaming Method	Unicast / Multicast				
	Max. User Access	20 Users				
	Video Interface	N/A				
	Audio Interface	1 Input, 1 Output / Compression: G.711a; G.711Mu; G.726; AAC; MPEG2-Layer2; G.722.1; G.729; G.723				
Environmental	Alarm Interface	N/A				
	RS485	N/A				
	Edge Storage	MicroSD Card (up to 256GB) / FTP / P2P				
	Interoperability	ONVIF / CGI				
	Power Supply	12VDC 1.5A / PoE (802.3af)				
	Power Consumption	<3W / <8.5W (IR on)				
	Operating Conditions	-30° ~ +60° C / ≤95% RH				
	Ingress Protection	IP66				
	Vandal Resistance	IK08				
	Housing	Metal				
Installation	Pan/Tilt/Rotation	N/A				
	Dimensions	Ø128mm x 65mm				
	Net Weight	0.49kg				

Installation	Dimensions & Mounting Options	Mounting Options				
		Ceiling Mount	Wall Mount	Corner Mount	Pole Mount	Pole Mount
		VSBKTA107 + VSBKTB220C	VSBKTA107 + VSBKTB305W	VSBKTA107 + VSBKTB305W + VSBKTA151	VSBKTA107 + VSBKTB305W + VSBKTA150	VSBKTA107 + VSBKTB220C + VSBKTB150

Your local VIP Vision™ IP solutions professional: