

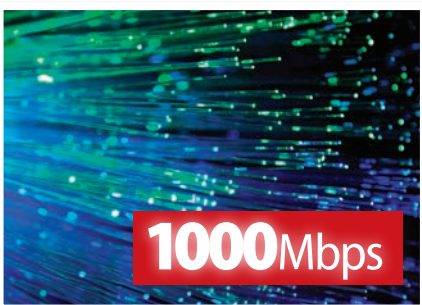


Fibre backbone interface.

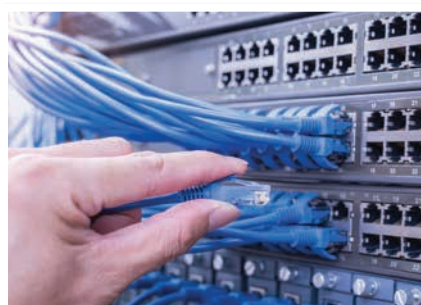
VSETH-SWF Series: Gigabit Fibre Ethernet Access Switch in 9 ports.

The VSETH-SWF Series enables the creation of high speed networks by connecting fibre and Ethernet infrastructure. Connect IP devices including surveillance, telephones, access points and more to fibre backbone with 4 x 1000M SFP and 5 x 1000M Ethernet ports. They are ideal in connecting large facilities such as school & university campuses.

- 5 x Gigabit 1000Mbps Ethernet ports
- 4 x Gigabit 1000Mbps SFP fibre ports
- Unmanaged switch for plug and play applications
- DIN rail mountable for neat rackmount installations
- Professional appearance full metal enclosure
- Lightning overvoltage protection up to 4kV
- Electrostatic discharge protection up to 8kVW
- Operates in extreme temperatures from -30°~65°C



Fast 1000Mbps Ethernet & SFP Ports



Plug & Play Unmanaged Switch



Overvoltage & ESD Protection

VSETH-SWF Series | Specifications

Model	VSETH-SW9GF
Product Image	
Device Ports	4 x 1000 Base-X 5 x 10/100/1000 Base-T
Network Management	Unmanaged
Switching Capacity	33Gbps
Packet Forwarding Rate	13.39Mbps
Packet Buffer Memory	1.75MB
MAC Table Size	4K
Exchange Mode	Store & forward
Power Supply	9 ~ 57VDC
Lightning Protection	Common Mode: 4kV / Differential Mode: 2kV
ESD Protection	Contact Discharge: ±6kV / Air Discharge: ±8kV
Operating Environment	-30° ~ 65°C / RH90% (max)
Mounting Options	DIN Rail
Weight	0.62kg
Dimensions	150mm x 100mm x 42mm

Your local VIP Vision™ network solutions professional: