



Incredible zoom distance.

Ultimate PTZ Series: Specialist 48x zoom PTZ dome available in 2.0MP

The ultimate long range surveillance solution, this 48x optical zoom PTZ is capable of ultra low light colour footage in minimal lighting conditions, as well as a host of intelligent functions, auto-tracking and long range infrared.

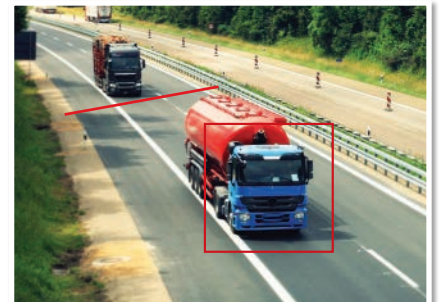
- Stream up to 2.0MP (1920 x 1080) at 50fps
- 48x optical zoom lens (64.55 ~ 1.5° viewing angles)
- Auto tracking with 8 intelligent video functions
- Low light colour performance at 0.001lx; 450m IR
- Electronic image stabilisation, face detect & more
- Endless 360° panning with tilt adjust; auto-flip 180°
- MicroSD card slot for recording up to 128GB
- Audio, alarm and video interface input/output
- Supports power via Hi-PoE (IEEE802.1x)
- IP67 weather resistant housing for external use



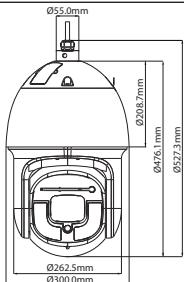
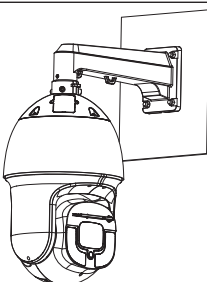

48x Lossless Optical Zoom



Superb Low Light Performance



Intelligent Auto Tracking

| Specifications | | 2.0MP 48x Zoom PTZ | |
|-----------------|-----------------------|--|-------------------|
| Camera | Ordering Information | VSIP2MPPTZIRK : Standard | |
| | Image Sensor | 1/1.9" 2.0MP Progressive Scan CMOS | |
| | Effective Pixels | 1920 (H) x 1080 (V) | |
| | RAM / ROM | 1024MB / 128MB | |
| | Min Illumination | 0.001 Lux/F1.4 (Color), 0 Lux/F1.4 (IR on) | |
| | S/N Ratio | > 55dB | |
| | Infrared System | 10 x Infrared LED, 450m range, Auto/manual on/off control | |
| Lens | Lens / Iris | 5.7 ~ 275mm F1.4 ~ F4.5 Motorised Lens with Auto Iris | |
| | Field of View | Horizontal: 64.5° ~ 1.5° (48x Optical Zoom) | |
| | Focus | Auto/Manual / 1.5m Min. Focus Distance | |
| DORI | Detect (25px/m) | 2731m | |
| | Observe (63px/m) | 1092m | |
| | Recognise (125px/m) | 546m | |
| | Identify (250px/m) | 273m | |
| PTZ | Pan / Tilt Range | Pan: 0 ~ 360° (endless) / Tilt: -30 ~ 90° / Auto-flip 180° | |
| | PTZ Speed | Preset : Pan: 240°/s; Tilt: 200°/s Manual : Pan: 200°/s; Tilt: 120°/s | |
| | Modes / Presets | Up to 300 presets / 5 Pattern, 8 Tour, Auto Pan, Auto Scan | |
| | Start-up Action | Auto-restore to previous PTZ/lens status | |
| | Auto Tracking | Support | |
| Video | Resolution | 1080p (1920 x 1080) to CIF(352 x 288) | |
| | Frame Rate | Main | 1080p (1 ~ 50fps) |
| | | Sub | D1 (1 ~ 25fps) |
| | | Third | 1080p (1 ~ 25fps) |
| | Video Compression | H.265 / H.264 | |
| | Bit Rate | H.265/H.264: 448K ~ 8192Kbps | |
| | Bit Rate Control | Constant bit rate (CBR) / Variable bit rate (VBR) | |
| | Day/Night | Auto (ICR) / Color / B&W | |
| | Lighting Compensation | BLC / HLC / WDR (120dB) | |
| | White Balance | Auto / ATW / Indoor / Outdoor / Manual | |
| Gain Control | Auto / Manual | | |
| Noise Reduction | Ultra 2D/3D DNR | | |
| Picture Control | Flip 180° | | |
| IVS | Intelligent Functions | Tripwire, Intrusion, Abandoned/Missing Object, Face Detection, Motion Detection, Region of Interest, Electronic Image Stabilisation, Privacy Masking (24 zones), Defog | |
| Network | Ethernet | RJ-45 (10Base-T/100Base-TX) | |
| | Protocol | IPv4/IPv6; HTTP; HTTPS; SSL; TCP/IP; UDP; UPnP; ICMP; IGMP; SNMP; RTSP; RTP; SMTP; NTP; DHCP; DNS; PPPOE; DDNS; FTP; IP Filter; QoS; Bonjour; 802.1x | |
| | Streaming Method | Unicast / Multicast | |
| | Max. User Access | 20 Users | |
| Interface | Video Interface | 1 Output (Vpp 75Ω) | |
| | Audio Interface | 1 Input, 1 Output / Compression: G.711a/G.711Mu/AAC/G.722 / G.726/MPEG2-L2 | |
| | Alarm Interface | 7 Inputs / 2 Outputs | |
| | RS485 | Yes | |
| | Edge Storage | MicroSD Card (up to 128GB) / NAS / Local PC | |
| Environmental | Interoperability | ONVIF / PSIA / CGI | |
| | Power Supply | 24VAC / 5A (±25%) / Hi-PoE (IEEE802.3at) | |
| | Power Consumption | <24W | |
| | Operating Conditions | -40° ~ +70° C / Less than 90% RH | |
| | Ingress Protection | IP67 | |
| | Vandal Resistance | N/A | |
| | Housing | Metal | |
| | Pan/Tilt/Rotation | Pan: 0° ~ 360° ; Tilt: -30° ~ 90° ; Rotation: 0° ~ 360° | |
| Application | Dimensions | Ø300mm x 527mm | |
| | Net Weight | 13kg | |
| Application | Mounting Options |   | |
| | |  <p>Included Accessories: 24VAC power supply, Mount adapter, Right angle bracket</p> | |

Your local VIP Vision™ IP solutions professional: