



Detailed vehicle evidence.

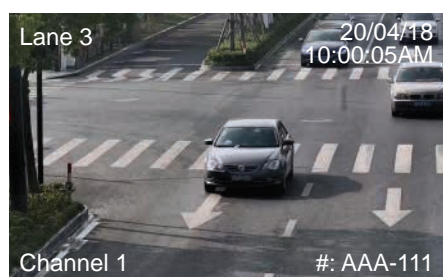
Ultimate Series: Motorised 2.0MP lens bullets with number plate enhancement

Specially designed for number plate enhancement, Ultimate Series Number Plate Bullets are designed to obtain video evidence with vehicle identification in all environments, including in scenes with challenging lighting conditions.

- Stream Full HD 1080p (1920 x 1080) at 25fps
- 2.7~12mm motorised lens (101 ~ 36°, DC lens)
- Edge enhancement for number plate detail & legibility
- Highlight compensation to mask headlight glare
- Supports shutter speed windowing; set min/max speed
- Motorised infrared cut filter for true day/night
- MicroSD slot for recording at the edge up to 128GB
- IP67/IK10 weather & vandal resistant metal housing
- Automatic number-plate recognition (ANPR) with configurable OSD incl. number plate (*TN model only*)



Number Plate Enhance & Recognition



Detailed OSD Configuration



Superb Low Light Performance

| Model | VSIP2MPFBIRMTV2 | VSIP2MPFBIRMTN | | |
|----------------------|-------------------------------------|---|---|--|
| Camera | Image Sensor | 1/2.8" 2.0MP Progressive Scan CMOS | | |
| | Effective Pixels | 1920 (H) x 1080 (V) | | |
| | RAM / ROM | 1024MB / 128MB | | |
| | Min Illumination | 0.005 Lux/F1.6 (Color), 0 Lux/F1.53 (IR on) | | |
| | S/N Ratio | > 50dB | | |
| | Infrared System | 4 x Infrared LED, 10m range, Auto/manual on/off control | | |
| Lens | Lens / Iris | 2.7 ~ 12mm F1.6 Motorised Varifocal Lens with Auto Iris | | |
| | Field of View | Horizontal: 101°~36°, Vertical: 53°~20° (4x Optical Zoom) | | |
| | Focus | Auto Focus / 3m Min. Focus Distance | | |
| Video | Resolution | 1080p (1920 x 1080) to CIF (352 x 288) | | |
| | Frame Rate | Main | 1080p (1 ~ 25fps) | |
| | | Sub | D1 (1 ~ 25fps) | |
| | | Third | N/A | |
| | Video Compression | H.265 / H.264 | | |
| | Bit Rate | 32 ~ 16384Kbps | | |
| | Bit Rate Control | Constant bit rate (CBR) / Variable bit rate (VBR) | | |
| | Day/Night | Auto (ICR) / Color / B&W | | |
| | Lighting Compensation | BLC / HLC / WDR (140dB) | | |
| | White Balance | Auto / Manual | | |
| | Gain Control | Auto / Manual | | |
| Noise Reduction | 3D DNR | | | |
| Picture Control | Mirror / Flip (0°, 90°, 180°, 270°) | | | |
| IVS | Intelligent Functions | Number Plate Edge Enhancement | Number Plate Edge Enhancement, Number Plate Recognition, Loop/Video Detection, Snapshot, OSD (Time, Location, Number Plate, Lane No.), White List (up to 1000), Barrier Control (1ch Relay Out) | |
| Network | Ethernet | RJ-45 (10/100 Base-T) | | |
| | Protocol | IPv4v6; HTTP; TCP/IP; UDP; NTP; DHCP; DNS | | |
| | Streaming Method | Unicast / Multicast | | |
| | Max. User Access | 10 Users / 20 Users | | |
| Interface | Video Interface | N/A | | |
| | Audio Interface | 1 Input / 1 Output | | |
| | Alarm Interface | 2 Input / 1 Output | | |
| | RS485 | N/A | | |
| | Edge Storage | MicroSD Card Slot (up to 128GB) / NAS / Local PC | | |
| | Interoperability | ONVIF / SDK / CGI | | |
| Environmental | Power Supply | 12VDC / PoE+ (802.3af) (Class 4) | | |
| | Power Consumption | <12W | | |
| | Operating Conditions | -40° ~ +60° C / Less than 95% RH | | |
| | Ingress Protection | IP67 | | |
| | Vandal Resistance | IK10 | | |
| | Housing | Metal | | |
| | Pan/Tilt/Rotation | Pan: 0° ~ 360°; Tilt: 0° ~ 90°; Rotation: 0° ~ 360° | | |
| Dimensions | Ø273mm x 95mm x 96mm | | | |
| Net Weight | 1.12kg | | | |
| Application | Diagrams | | | |
| | Accessories | | | |
| Models | Junction Box (VSBKTA121) | Pole Mount (VSBKTA121 + VSBKTA152E) | Corner Mount (VSBKTA121 + VSBKTA151) | |

Your local VIP Vision™ IP solutions professional: