

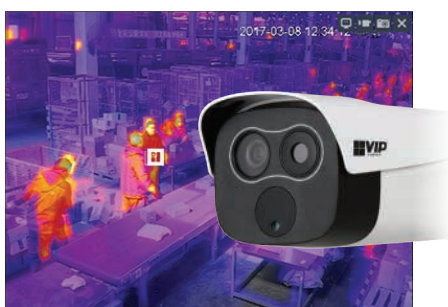


Hybrid thermal imaging.

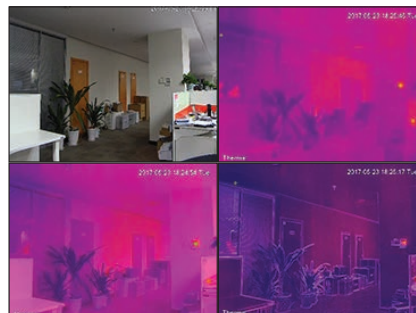
Professional Thermal Series: Fixed lens hybrid bullet available in 2.0MP

By combining traditional image & thermal sensors, VIP Vision hybrid thermal cameras redefine your expectations of surveillance. Enhance images with Image Fusion thermal overlay, achieve excellent motion detection accuracy, setup thermal perimeters using IVS, and detect fires before they start, all in a compact weather rated body.

- Stream up to Full HD/1080p (1920 x 1080) at 25fps
- 2.0MP standard sensor & 4mm lens (75° view angle)
- One IP address/channel for thermal & visible images
- 35m infrared range, true WDR (120dB) & ultra DNR
- Superb low light capability in colour, up to 0.005lx
- Uncooled VOx thermal sensor (160x120 pixels)
- 1mm fixed lens for thermal camera (56° view angle)
- Detects 7~14µm wavelength infrared spectral range
- Adjustable modes & alarm output for fire detection
- Four IVS functions, audio I/O, IP67 rated body & PoE



Fire Detection & Alarm Output



Adjustable Hybrid Image Modes



Compact, Water-Resistant Design

Model		VSIPTC2MPFB		
Visible Light Camera		Thermal Camera		
Camera	Image Sensor	1/2.8" 2.0MP Progressive Scan CMOS	Thermal Sensor	Uncooled VOx Microbolometer
	Effective Pixels	1944 (H) x 1092 (V)	Effective Pixels	160 (H) x 120 (V)
	RAM / ROM	512MB / 32MB	Sensitivity (NETD)	<50mK@f/1.1
	Min Illumination	0.005 Lux/F1.8 (Color), 0 Lux/F1.8 (IR on)	Spectral Range	7~14um
	S/N Ratio	> 50dB	Image Settings	Brightness, Sharpness, Region of Interest, Auto Gain Control, Flat Field Correction, 3D Digital Noise Reduction
	Infrared System	1 x Infrared LED, 35m range, Auto/manual on/off control	Colour Palettes	14 thermal colour palettes (eg: WhiteHot, BlackHot, Rainbow etc.)
	Lens	Lens / Iris	4mm F1.8 Fixed Lens	Lens / Iris
Field of View		Horizontal: 110°~40°, Vertical: 74.8°~44.7°	Field of View	Horizontal: 56°, Vertical: 44°
Focus		Fixed	Focus	Athermalized, Focus-free
Video	Resolution	1080p (1920 x 1080) to CIF (352 x 288)		
	Frame Rate	Main	Visible: 1080p to 720p (1 ~ 25fps) / Thermal: 1280 x 960 to 720p (1 ~ 25fps)	
		Sub	Visible: D1 to CIF (1 ~ 25fps) / Thermal: 640 x 480 to 320 x 240 (1 ~ 25fps)	
		Third	N/A	
	Video Compression	H.264		
	Bit Rate	H.264: 640 ~ 8192Kbps		
	Bit Rate Control	Constant bit rate (CBR) / Variable bit rate (VBR)		
	Day/Night	Auto (ICR) / Color / B&W		
	Lighting Compensation	BLC / HLC / WDR (120dB)		
	White Balance	Auto / Natural / Street Lamp / Outdoor / Manual		
	Gain Control	Auto / Manual		
	Noise Reduction	3D DNR		
	Picture Control	Mirror / Flip (180°)		
Effective Distance (Thermal Detection)	Person: Detect: 60m, Recognise: 20m, Identify: 10m Vehicle: Detect: 200m, Recognise: 60m, Identify: 30m			
IVS	Intelligent Functions	Tripwire, Intrusion, Abandoned/Missing Object, Motion Detection (4 zones), Region of Interest (4 zones), Privacy Masking (4 zones), Smart Infrared		
	Thermal Functions	Fire Detection and Alarm, Image Fusion		
Network	Ethernet	RJ-45 (10/100Base-T)		
	Protocol	IPv4/IPv6; HTTP; HTTPS; SSL; TCP/IP; UDP; UPnP; ICMP; IGMP; SNMP; RTSP; RTP; SMTP; NTP; DHCP; DNS; PPPOE; DDNS; FTP; IP Filter; QoS; Bonjour; 802.1x		
	Streaming Method	Unicast / Multicast		
	Max. User Access	10 Users / 20 Users		
Interface	Video Interface	1.0Vp-p/75Ω, PAL/NTSC (HDCVI Optional)		
	Audio Interface	1 Input, 1 Output / Compression: G.711a, G.711Mu, AAC		
	Alarm Interface	2 Input / 1 Output		
	RS485	Support		
	Edge Storage	MicroSD Card (up to 128GB) / NAS / Local PC		
	Interoperability	ONVIF / PSIA / CGI		
Environmental	Power Supply	12VDC / PoE		
	Power Consumption	<12W		
	Operating Conditions	-30° ~ +55° C / Less than 95% RH		
	Ingress Protection	IP67		
	Vandal Resistance	N/A		
	Housing	Metal		
	Pan/Tilt/Rotation	N/A		
	Dimensions	239mm x 91mm x 91mm (with bracket)		
Net Weight	<1.00kg			
Application	Diagrams			
	Diagrams			
	Models	Junction Box (VSBKTA121)	Pole Mount (VSBKTA121 + VSBKTA152)	Corner Mount (VSBKTA121 + VSBKTA151)

Your local VIP Vision™ IP solutions professional: