



Perfect intercom upgrades.

2-Wire Series: Upgrade intercom systems over existing 2-wire infrastructure

The 2-wire Residential IP Video Intercom is the perfect upgrade solution to your old intercom or door bell system. Upgrade and experience a multitude of modern intercom features, all using your existing two-wire infrastructure.

- 1.3 megapixel, low-light door station camera
- Door stations calls all programmed indoor monitors
- Connects to your network using Network Controller
- Interfaces with electronic door strikes and sensors
- Intuitive single-button interface for ease of use
- Surface mount monitor; white gloss & aluminium
- Slim profile 7" touchscreen indoor intercom monitor
- Receive visitor notifications, leave audio & video messages, remote view, remote unlock and 2-way talk via iOS & Android devices



Upgrade Existing 2-Wire Systems



Add 2-Wire Systems to Network



Two-way talk & Remote Unlock

2-Wire Series | Series Features



Replace old systems.

Re-use existing 2-wire cabling for new installations.

Easily upgrade existing intercoms or doorbells to a VIP Vision IP Intercom System using the existing 2-wire infrastructure.

- Install new indoor monitors and door stations easily.
- Integrate door strikes & sensors into the new system.
- Call all monitors at once from single door station.

2-wire to network.

Use 2-wire cable systems over existing networks.

Using the 2-Wire Intercom Network Controller, the intercom system can be taken online, allowing for mobile functionality via smartphone app.

- Connect up to 4 x 2-wire intercom devices
- Connects intercom system to the Internet for remote unlocking, recording and remote view via app
- Provides 24VDC power to door stations (max. 30W)



Mobile access.

Gain entry and view visitors via smartphone app.

Gain access to your home and answer the door from anywhere with the free smartphone app. View and converse with visitors as if you were right at home.

- Integrate phones into the system as an access method.
- Ask deliverymen to drop off packages
- Check for potential intruders with remote view

2-Wire Series | Series Specifications

Model	INTIPRDSVW2W	
General	Product Image	
	Main Processor	Embedded Microprocessor
	Backlit Interface	N/A
	Card Support	N/A
Camera	Tamper Detection	Yes
	Camera System	1.3" 1.3 Megapixel CMOS with 2.8mm lens Angle adjustable (Diagonal FoV: 120°)
	Audio Input	Omni-directional Microphone
	Audio Output	Embedded Loudspeaker
	Bidirectional Talk	Support
	Ethernet	10M/100Mbps Self-adaptive
	Network Protocol	TCP/IP
Environmental	Vandal Resistant	IK07
	Ingress Protection	IP54
	Installation	Includes surface mount rain shield/bracket
	Power Input	24VDC
Accessories	Power Consumption	Standby < 1W / Operation < 7W
	Weight / Dimensions	0.80kg / 130 x 140 x 32mm
Product Diagram		
Compatible Brackets	 INTIPRDSVW-FMA: Flush mount box (optional)	

Model	INTIPMONFB2W	
Monitor	Product Image	
	Main Processor	Embedded Microprocessor
	Video Compression	H.264
	Audio Input	Omni-directional Microphone
	Audio Output	Embedded Loudspeaker
	Bidirectional Talk	Support
	Display Size	7" Colour TFT LCD
	Display Resolution	SVGA (800 x 480)
	Alarm Support	Yes; 6 Input channels / 1 output channel / 1 x RS485
	Operational Input	Resistive Touchscreen / On-unit Soft Keys
	Internal Capacity	4GB MicroSD Card (removable)
	Ethernet	10M/100Mbps adaptive
	Network Protocol	TCP/IP
	Environmental	Operating Temperature
Installation		Surface wall mounting bracket & kit
Power Input		24VDC
Power Consumption		Standby < 1.5W / Operation < 7W
Weight / Dimensions	0.80kg / 200 x 136 x 22mm	
Product Diagram		

Additional Accessories



2-Wire Residential Intercom Network Controller

Model: INTIPNC2W

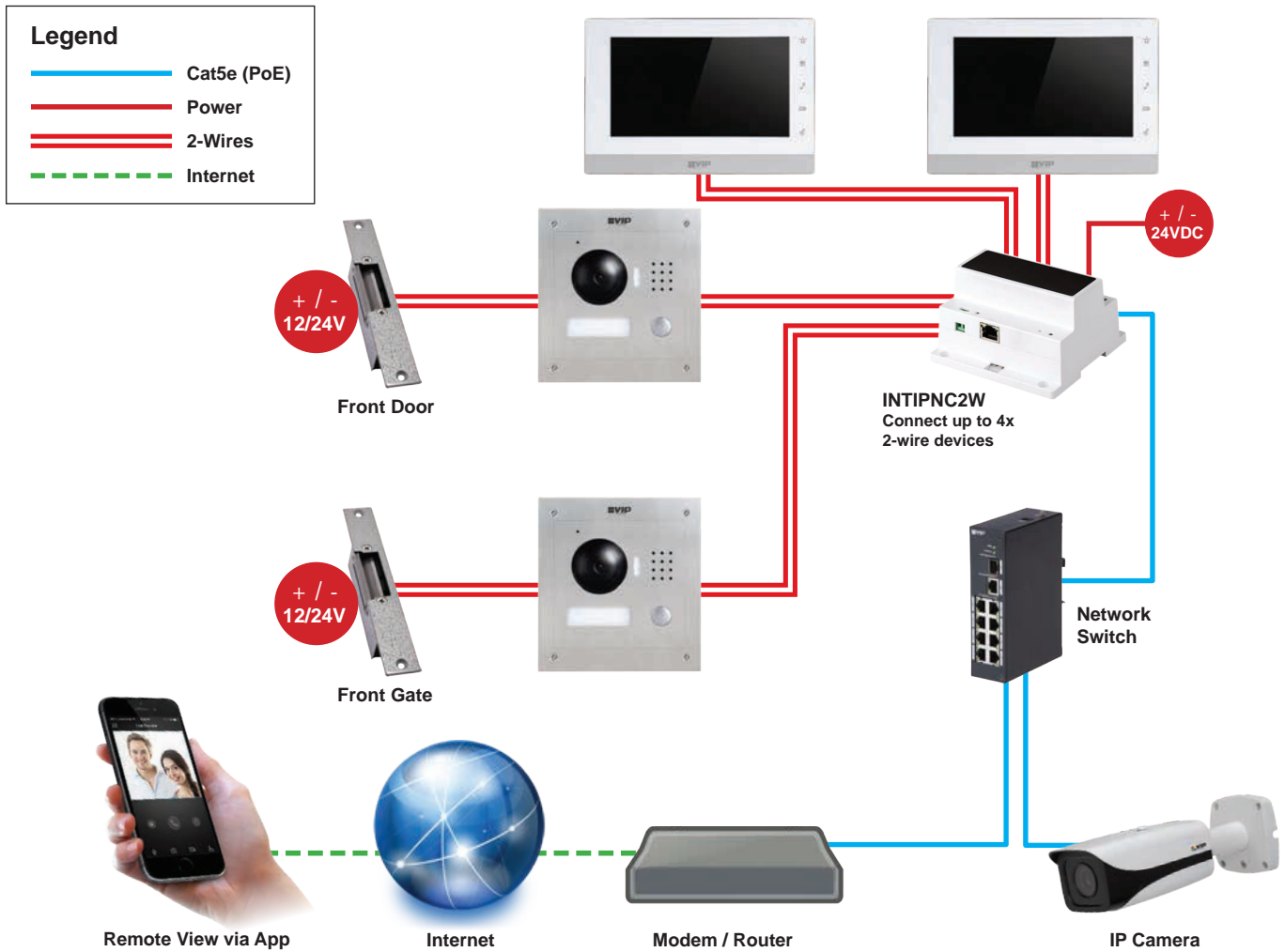
Connect your 2-wire system to the Internet using the 2-wire Intercom Network Controller. Then link the app to your intercom to answer visitors, take snapshots/recording and even unlock doors, all from your smartphone or tablet.

- Facilitates network/power connectivity to 4 x 2-wire intercom devices
- Connect intercom system to the Internet for use with remote view app
- Provides 24VDC power with a maximum power load of 30W
- Includes surface mount and DIN-rail mounting options

Model	INTIPRDSVW2W	
General	Vandal Resistant	N/A
	Ingress Protection	N/A
	Operating Environment	-10°C ~ +55°C
	Power Input	24VDC
	Power Consumption	Standby < 0.2W / Operation < 30W
	Weight / Dimensions	0.50kg / 108 x 108 x 64mm

2-Wire Series Installation with Remote Connectivity | System Map

The VIP Vision 2-Wire Intercom System can quickly upgrade an existing 2-wire door bell or intercom unit. Add up to four 2-wire devices and remote connectivity with your smartphone by using the network controller.



2-Wire Series without Remote Connectivity | System Map

The 2-Wire intercom system can be fitted without network connectivity. However, this system will not be able to be accessed remotely.



Your local VIP Vision™ Intercom solutions professional: