



# THE ULTIMATE OFF-GRID SOLAR CCTV SOLUTION

PROTECT YOUR SITE & ASSETS WITH A 4G  
SOLAR CAMERA SYSTEM FROM VIP VISION™



# VIEW PROGRESS, IMPROVE WHS AND DETER CRIME

With Remote 24/7 Solar CCTV Recording

IP PTZ Camera

From construction to finished product, always be connected with remote site management. The SLR-B Series standalone surveillance solution is a powerful tool to protect your assets, improve staff safety, deter criminal behaviour and monitor various other factors.

## Covering every building site security risk.

Adopt surveillance technologies used by leading businesses to cut inefficiency, protect your interests and re-energise your projects. With so much going on at a construction site, it's hard to keep a watchful eye on every aspect of the project at all times.





# OFF-SITE CHALLENGES

Management of multiple sites & staff is challenging

## No on-site power

Often times, construction sites lack a reliable mains power supply. This makes it challenging to set up electrical systems, such as surveillance and lighting.



## Direct management

Depending on location, or from having multiple projects on at once, it can be difficult for a site manager to be at a site in-person every day to oversee projects.



## Theft & vandalism

Repairing site damage and replacing stolen equipment can be costly. It's important to protect the site from theft and vandalism - from both employees and outsiders.



## Safety & liability

Site managers bear responsibility in the safety of construction workers. It can be difficult to ensure OHS protocols are being followed at all times.





# Transform site management with VIP Vision SLR-B Series

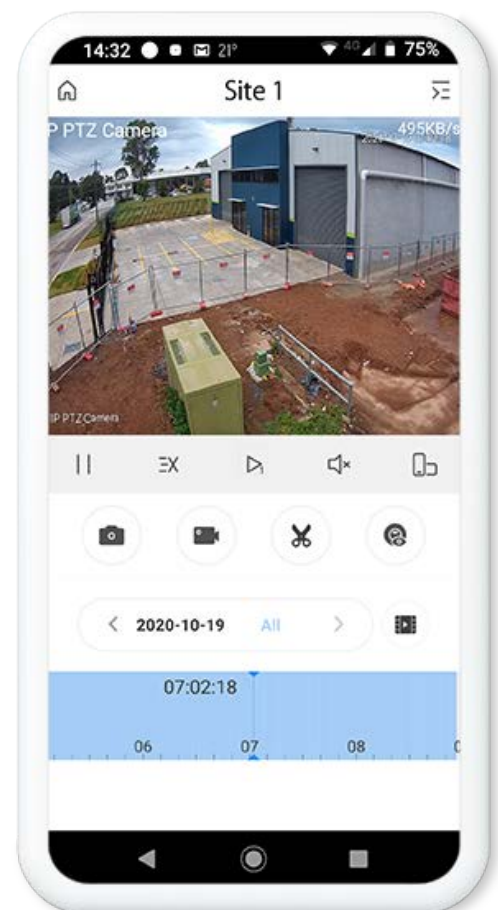
The latest generation of Solar CCTV Systems from VIP Vision™ can deliver professional video surveillance to the most challenging of installation sites.

The system features the latest in 4G-enabled remote site surveillance, with advanced camera artificial intelligence and simplicity of installation & operation.

The system offers comprehensive remote viewing options. View your site from almost any device, including iOS (iPhone & iPad), Android, PC & Mac software or web browser.

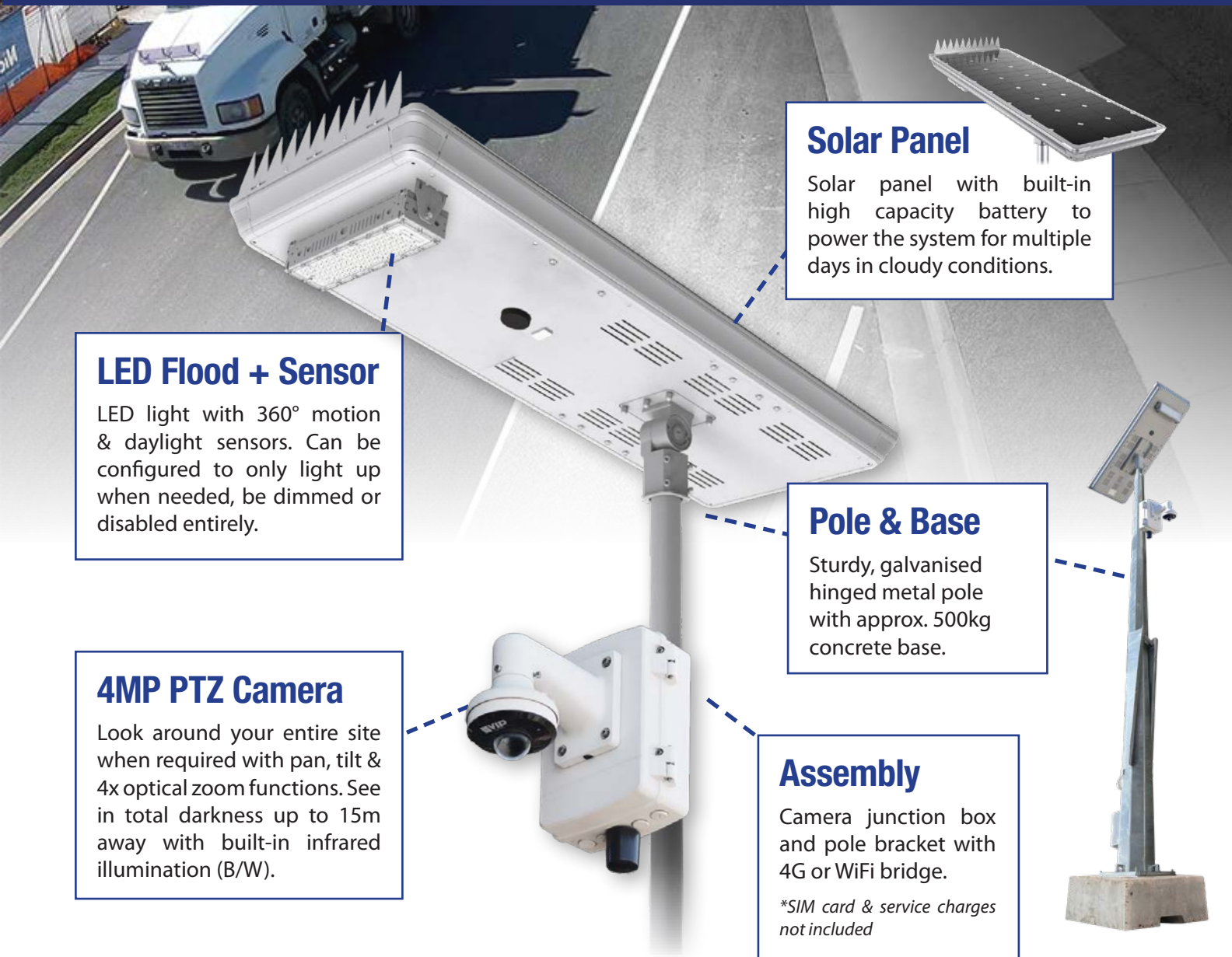
## Receive instant mobile alerts via push notification or email address

With the free app, you can live view and play back at any time. If an alarm event is triggered, push notifications or emails with snapshots can be automatically sent to multiple recipients.



# SYSTEM OVERVIEW

Always connected with SLR-B Series solar surveillance



## A self-sustaining solar CCTV solution

SLR-B Series is a powerful system powered by the sun

These systems can help you monitor and increase efficiency and security:

- Monitor & protect your site with 24/7 visibility
- Keep track & be alerted of vehicles and people
- Reliable & accessible surveillance for remote locations





# CAMERA FEATURES

Achieve site-wide CCTV coverage with our 4MP PTZ dome camera



## Cover the whole scene with pan-tilt-zoom.

Capture incredible images with the PTZ camera. This camera can easily cover entire sites and makes setting up a breeze. **The camera can be controlled remotely, allowing for easy image adjustment via smartphone or desktop application.**



*Using customised presets, the camera view can be quickly moved from location to location, making the review process fast and efficient.*

**See more detail with 4x lossless optical zoom** - Remotely adjust the camera from wide angle view to a narrower view, to see enhanced image detail when required.



Unzoomed, the camera has a wide 97° field of view.



At 4x lossless optical zoom, the camera has a narrow 32° field of view, but greater image detail.



# STANDARD FEATURES

## Surveillance features included in your SLR-B system

The SLR-B series comes with intelligent and modern surveillance features to increase the quality of your monitoring and to enhance the usability of your system. These features make your surveillance easy to review and access, anywhere you are.

### Receive accurate alerts with Artificial Intelligence.

Our systems are capable of advanced intelligent features, including tripwire & intrusion detection with the ability to identify people & vehicles from other moving objects.



### 24/7 Recording

The camera features 24/7 continuous edge recording & uses a surveillance-grade micro SD card, automatically overwriting the oldest footage. A 256GB card can record over 7 days of footage at full resolution (the use of motion activation only can far extend this period.)



### Remotely Monitor and Control

The 4G or WiFi connectivity of the SLR-B system brings convenience and peace of mind to you and your busy schedule. The cameras we offer can be remotely connected to via mobile device or computer, and controlled with a free surveillance app.



# AI FEATURES

Receive meaningful security alerts, make searching footage a breeze & protect your site with AI CCTV

## Receive accurate alerts with AI

Our systems are capable of advanced intelligent features, including tripwires & intrusion detection with the ability to identify people & vehicles from other moving objects. Prevent trespassing & suspicious activity with AI tripwire & intrusion detection.

### AI Perimeter Protection

DON'T MISS A THING WITH LIVE ALERTS

#### Tripwire

Sends alerts with a person and/or vehicle crosses a virtual tripwire.



#### Intrusion

Sends alerts with a person and/or vehicle crosses a virtual fenced area.





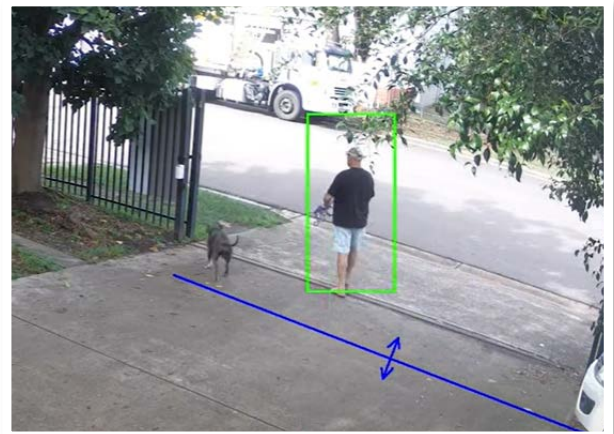
# STANDARD FEATURES

## Surveillance features included in your SLR-B system

### AI Human/Vehicle Detection

#### GET MEANINGFUL SECURITY ALERTS

AI technology accurately differentiates between movements, only providing alerts when a person or vehicle is detected.



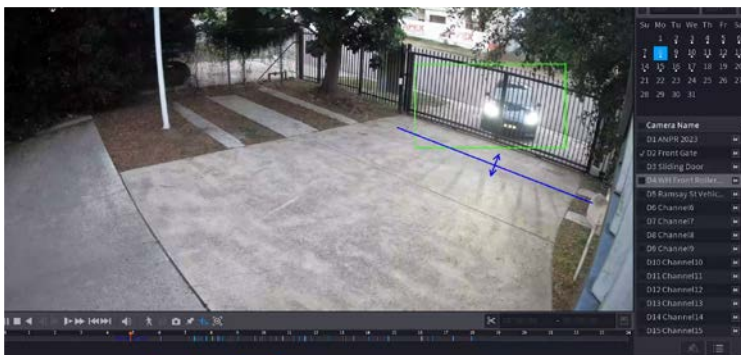
- Smart motion detection filters unwanted activity with 99% accuracy

- Prevent trespassing & suspicious activity
- Know when and how people enter your premises, to improve flow and access control

### Automatic Notifications and Smart Playback

#### RECEIVE REAL-TIME NOTIFICATIONS VIA APP

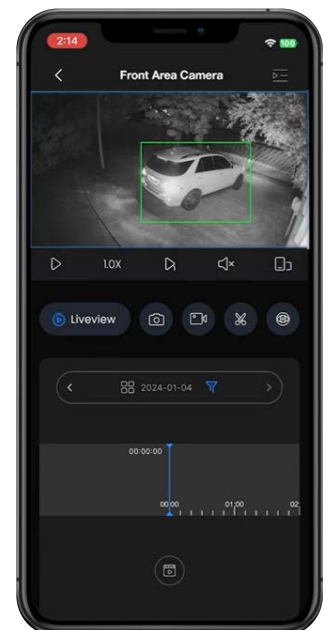
With the free mobile app, access live-view & play back at any time. With an AI NVR, AI detects meaningful events and marks them on the playback timeline



VIP Vision  
AI NVR



DMSS App



- When using AI features on an AI NVR, the recording marks triggered events on the timeline
- Automatic push notifications with snapshots sent to multiple recipients if alarm event is triggered
- Remote controlled allowing for easy live image adjustment view smartphone application



# CUSTOMISE YOUR SLR-B

Enhance your CCTV experience with specialty AI cameras, security monitoring & timelapse services

## Enhance your security and control

By tailoring the system to suit the location, budget, and operational needs, you can ensure a robust, efficient, and cost-effective surveillance solution with seamless remote access and control capabilities.

### AI People Counting

**GAIN VALUABLE INSIGHTS ON YOUR SITE**

People counting uses predetermined lines to count how many people enter and leave a given premises.

- Receive real-time accurate alerts
- Utilise with heat map to show foot traffic density and average stay time
- Allocate extra assistance or employees where and when it is needed

*Only from Ultimate Series cameras*



### AI Licence Plate Recognition

**REVIEW AND MONITOR VEHICLES ENTERING SITE**

With deep learning models, ANPR technology is able to differentiate between number plates.

- Up to 98% plate detection accuracy
- Control access gates via plate recognition
- Receive alerts for unknown vehicle plates
- Detect vehicles traveling up to 40km/h
- Refer to **VSIPNP** Series cameras

*Only from ANPR cameras*





# OPTIONAL FEATURES

Choose what matters to you in your solar cameras

## Warning Siren & Strobe

### AI ACTIVE DETERRENCE

Customisable siren tones or voice messages play on trigger to actively deter trespassers.

- 30m infrared for discreet operation pre-detection
- Red/blue light & siren AI detection activated
- AI people & vehicle detection
- Speak remotely via smartphone application

*Only from Active Deterrence cameras*

## Upgraded Image Quality

### OPTIONAL 4K IMAGE QUALITY

Customise with 8.0MP AI Turret cameras for high-resolution images to better identify people & objects.

- *Captured with a 8.0MP at 4x lossless optical zoom, the camera has a narrow 32° field of view, but superb image detail.*

*Only from Ultimate Series cameras*



## Professional B2B Monitoring

### 24/7 BACK-TO-BASE MONITORING CENTRE

If a human or vehicle is detected out of hours, the footage can be reviewed by a monitoring centre and action taken.

*Requires additional add-ons, subscription fee applies. Contact us for more information*



## Timelapse Video Creation

### FREE SERVICE WITH YOUR SYSTEM

Observe your progress in real-time & stay on-top of your worksite operations. Set up the camera to automatically take intermittent snapshots over a preset period, which we can assist with, free of charge.





# PANEL CAPACITY TO SUIT YOUR APPLICATION

Two panel and battery options to support your power and location needs

## Solar panels for 24/7 surveillance use

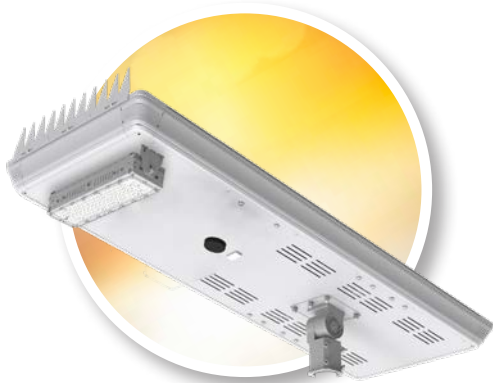
The SLR-B Series relies on solar power, utilizing its efficient silicon monocrystalline solar panel and solar battery to store excess energy and maximise usage efficiency. We have two panel and battery sizes to suit your requirements and environmental capabilities.

Dependent on your location, more specifically latitude, what solar system works for you may differ.

### 120W Panel 500Wh Battery

**Standard Model *North* of Canberra:**

Supports 1 Camera (excl. ANPR), 500Wh battery, 50W LED motion sensor light



*"I need basic security-grade surveillance that operates 24/7 so I can remotely check up on my worksite anytime I need."*

### 180W Panel 1.2KWh Battery

**Standard Model *South* of Canberra:**

Supports up to 2 Cameras, 1200Wh battery, 60W LED motion sensor light



*"I'm in an area with persistent cloud coverage and I need extra uptime or the possibility of multiple cameras."*



# REMOTE MONITORING FROM ANYWHERE

Select between 4G with B.Y.O. SIM or  
high speed wireless links



## Communication modes to suit your site

We offer two models for communication with your solar camera system. 4G or Wifi can be used dependent on your application conditions. The SLR-B Series convenient options are the perfect solution for off-grid capacities, remote worksite management or for monitoring project development and WH&S practices.

\*4G SIM card and service charges sold separately

### WiFi Communication

#### 5GHz 900Mbps Wireless Links

5GHz wireless antennas pair, configured  
as network bridge, 5km range (LoS)



*"I have another location nearby whose network I can leverage, so I can remotely monitor & adjust my solar camera."*

### 4G Communication

#### 4G LTE Modem Router

LTE connectivity up to 150Mbps speeds  
4G\* with wide band support



*"I need to connect via mobile internet using a SIM service, so I can remotely monitor & adjust my solar camera."*



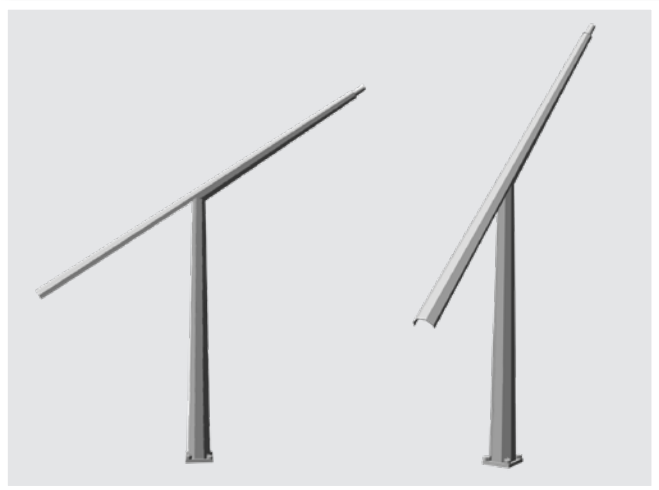
# MOUNTING OPTIONS FOR SLR-B SERIES

Hinged or rigid poles for great camera results

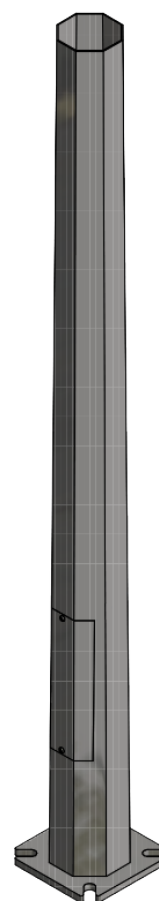
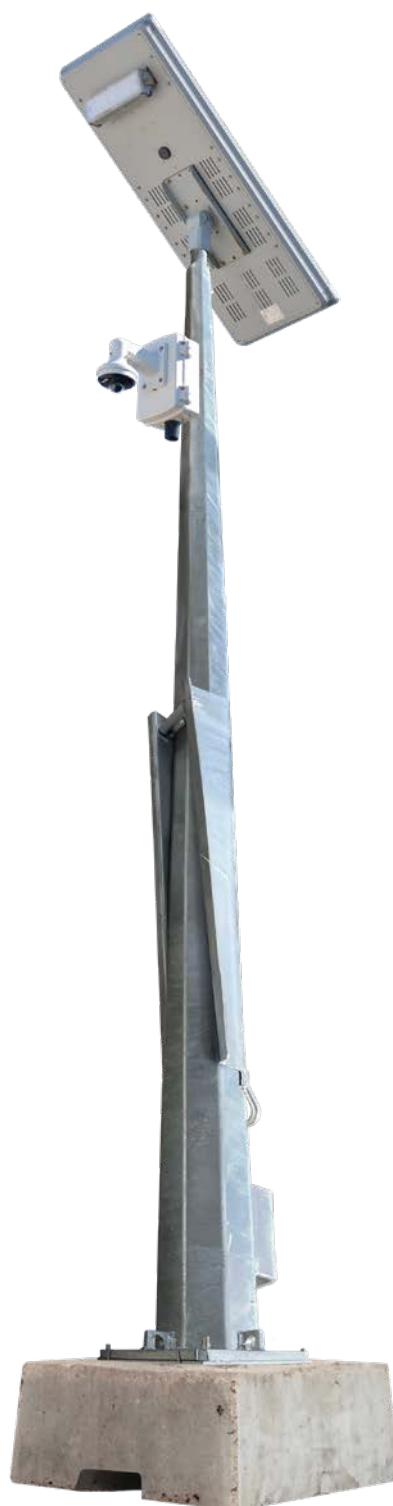
## Easy installation with hinged pole.

**4m or 6m tall hinged galvanized pole.**  
**No need for a ladder or working at heights.**

1. Install the base on a hard flat surface.
2. Bolt the pole to the base.
3. Connect the solar module & camera.
4. Raise the hinged pole and lock it in place.



*Hinge action to allow for installation without climbing ladders or heights*



*Rigid octagonal pole also available*



# CUSTOM MOUNTING

We custom integrate based on your installation needs

## SLR-B is easy to integrate into your project

Our systems are capable of being integrated with private poles, existing power, or your camera of choice, allowing them to be used on an incredibly wide range of applications. Utilise 240VAC or 12VDC power supply, includes 10m of outdoor cable.



### CUSTOM APPLICATIONS

## Pre-Existing Mounting

If there's ready-to-mount infrastructure available such as street posts - skip the pole and base. BYO pole or base is also available.

*Inquire for more information*



### POWER AVAILABLE

## On-Site Power Source

Already have a 240VAC power source or 12VDC power supply? The SLR-B is perfect for integration into any site where you can easily run a cable from an existing line.

*Inquire for more information*



### BRING YOUR OWN CAMERA

## Camera Flexibility

Choose from our range of cameras from our list on the following pages, or bring your own camera of choice.

\*Camera must be compatible with chosen power source

*Inquire for more information*



# CUSTOMISABLE KITS

Build the solar CCTV system tailored to your needs

## Solar Options



### 120W / 500Wh Solar Panel with LED Light

*Supports 1 camera (excluding ANPR cameras)  
Standard Model for locations north of Canberra*

- 120W monocrystalline solar panel (12VDC)
- 500Wh lithium iron phosphate (LiFePO4) battery
- 50W microwave motion sensor LED light; with multi-stage dimming and 145° x 100° rectangular beam pattern



### 180W / 1200Wh Solar Panel with LED Light

*Supports up to 2 cameras (depending on location & camera model)  
High capacity for locations south of Canberra, or extra uptime*

- 180W monocrystalline solar panel (24VDC)
- 1200Wh lithium iron phosphate (LiFePO4) battery
- 60W microwave motion sensor LED light; with multi-stage dimming and 145° x 100° rectangular beam pattern

## Pole Options & Add-Ons



### U-Shaped Bracket

Galvanised U-shaped bracket for mounting up to 2 solar modules side-by-side.



### Rigid Galvanised Poles

Octagonal, available in 4.5m, 6m & 10m



### Hinged Galvanised Pole

60mm top spigot diameter, octagonal, available in 4m & 6m, rope & manual installation

### Concrete Pole Base

Available as add-on with octagonal hinged poles, this base can be placed onto your site and transported using a forklift and other machinery

Available in 580kg and 815kg models








## Camera Options

 <p><b>Standard</b></p>		
<p><b>4.0MP Mini AI PTZ Dome</b></p> <p>2.8 ~ 12mm motorised pan-tilt-zoom lens 4x optical zoom lens (31.6° ~ 96.9°, lossless) Pan adjust lens for near 360° site coverage Tilt adjust lens 5° ~ 90° 15m infrared range AI person &amp; vehicle detection via motion AI person &amp; vehicle detection via tripwire/intrusion</p>	<p><b>8.0MP AI Deterrence Turret Dome</b></p> <p>2.8mm fixed lens (106°) 24/7 colour footage at 0.004lx 30m infrared range AI person &amp; vehicle detection via motion AI person &amp; vehicle detection via tripwire/intrusion In-built mic &amp; loudspeaker; warning message White LED security light on AI detection Red/blue strobe light deterrent on alarm</p>	<p><b>8.0MP Professional AI Turret Dome</b></p> <p>2.7 ~ 13.5mm motorised lens 113° ~ 31° viewing angles 4K Ultra HD 8MP capture resolution Low light footage at 0.007lx 40m infrared range AI person &amp; vehicle detection via motion AI person &amp; vehicle detection via tripwire/intrusion</p>
		
<p><b>4.0MP Ultimate AI Turret</b></p> <p>2.7 ~ 12mm motorised lens 114° ~ 47° H viewing angles Low light footage at 0.003lx 40m infrared range AI person &amp; vehicle detection via motion AI person &amp; vehicle detection via tripwire/intrusion AI people counting and heatmap AI face capture and face searching playback</p>	<p><b>2.0MP ANPR Traffic Bullet</b></p> <p>Automatic number-plate recognition (ANPR) 2.7~13.5mm motorised lens, 119° ~ 32° H 12m infrared range (max distance from plate) Send alerts for blacklisted/whitelisted plates Edge enhancement for plate detail &amp; legibility, including headlights on Capture vehicles going up to 30km/h Camera controls gate output <i>For use with 180W panel only</i></p>	<p><b>8.0MP AI Deterrence 180° Turret Dome</b></p> <p>Splices 2 x 4MP images for 180° 4K image 2 x 2.8mm fixed lens (180°) 24/7 colour footage at 0.004lx 25m infrared range, 20m white LED range AI person &amp; vehicle detection via motion AI person &amp; vehicle detection via tripwire/intrusion In-built mic &amp; loudspeaker; warning message White LED security light on AI detection Red/blue strobe light deterrent on alarm</p>


## Storage


<p><b>CCTV MicroSD Cards</b></p> <p>Surveillance-grade microSD cards for footage recording</p> <p>256GB standard, 512GB optional</p> <p>256GB - Record &gt;5 days (24/7) 512GB - Record &gt;10 days (24/7)</p> <p><i>Use of AI motion detection recording only will greatly extend recording time</i></p>

## Networking Options

	
<p><b>5GHz Wireless Links</b></p> <p>2 x 5.8GHz wireless antennas Pre-programmed for easy use 120° beam width, 16dBi gain Network bridge as standard Available as PtP or PtMP</p>	<p><b>4G LTE Modem Router</b></p> <p>LTE connectivity up to 150Mbps speeds 4G: FDD-B1/B2/B3/B4/B5/B7/B8/B28, TDD-B40 Support for all major telcos</p> <p><i>*SIM card sold separately</i></p>

## Monitoring


<p><b>Back to Base Monitoring</b></p> <p>If a human or vehicle is detected out of hours, the footage can be reviewed by a remote monitoring centre and action taken.</p> <p><i>*Additional hardware required, contact us for more information</i></p>

# 120W panel with standard single camera:

120W 4G Solar Surveillance System			
Solar Panel			
Image			
Panel Type	120W monocrystalline silicon panel		
Conversion Rate	Up to 21% efficiency		
Battery	500Wh Lithium Iron Phosphate (LiFePO4)		
Panel Adjustment	-60° ~ 60° tilt adjustable with angle compass		
Ingress Protection	IP65		
Wind Resistance	Up to 65m/s		
Dimensions	1321 x 525 x 161mm		
Pole Diameter	Ø50 ~ 60mm		
Area Light			
Light Module	50W LED (3030 Philips), 9400lm (180lm/W)		
Light Characteristics	145° x 100° (batwing) beam angle / 5700K cool white / 50,000hrs rated lifespan		
Motion Detection	Microwave motion sensor, Ø8 ~ 15m range (at 10m height)		
Adjustable Settings	Normal & Morning time periods / Brightness on motion / On-time delay / Brightness after delay		
Light Adjustment	-30° ~ +30° tilt adjustable twin LED module		
Camera			
Camera Options		<b>4.0MP Mini AI PTZ Dome</b> 2.8 ~ 12mm Motorised lens 31.6° ~ 96.9° (4x optical zoom) Pan: 0° ~ 355° / Tilt: 5° ~ 90° IP66 weather resistant IK08 vandal resistant Video analytics (tripwire etc.) Perimeter protection to identify people & vehicles	
Connectivity			
Inclusions and Optional Accessories			
	<b>Solar CCTV Assembly (included)</b> Mounting kit with backing box and triple-clamp pole mount (pole not incl.)	<b>256GB MicroSD (included)</b> 256GB surveillance grade microSD card for footage recording	<b>4G LTE Wireless Access Point</b> LTE connectivity up to 150Mbps speeds 4G: FDD-B1/B2/B3/B4/B5/B7/B8/B28, TDD-B40 <i>*SIM card &amp; service charges apply</i>
Diagrams			



# 180W panel with option for dual cameras:

180W 4G Dual Camera Solar Surveillance System			
Solar Panel			
Image			
Panel Type	180W monocrystalline silicon panel		
Conversion Rate	Up to 21% efficiency		
Battery	1200Wh Lithium Iron Phosphate (LiFePO4)		
Panel Adjustment	-60° ~ 60° tilt adjustable with angle compass		
Ingress Protection	IP65		
Wind Resistance	Up to 65m/s		
Dimensions	1496mmx685mmx161mm		
Pole Diameter	Ø50 ~ 60mm		
Area Light			
Light Module	60W LED (3030 Philips), 9400lm (180lm/W)		
Light Characteristics	145° x 100° (batwing) beam angle / 5700K cool white / 50,000hrs rated lifespan		
Motion Detection	Microwave motion sensor, Ø8 ~ 15m range (at 10m height)		
Adjustable Settings	Normal & Morning time periods / Brightness on motion / On-time delay / Brightness after delay		
Light Adjustment	-30° ~ +30° tilt adjustable twin LED module		
Camera			
Camera Options			
Camera Options	<p><i>Available with 1 or 2 Cameras</i> <b>4.0MP Mini AI PTZ Dome</b> 2.8 ~ 12mm Motorised lens 31.6° ~ 96.9° (4x optical zoom) Pan: 0° ~ 355° / Tilt: 5° ~ 90° IP66 weather resistant IK08 vandal resistant Video analytics (tripwire etc.) Perimeter protection to identify people &amp; vehicles</p>		
Connectivity			
Inclusions and Optional Accessories			
	<p><b>Solar CCTV Assembly (included)</b> Mounting kit with backing box and triple-clamp pole mount (pole not incl.)</p>	<p><b>256GB MicroSD (included)</b> 256GB surveillance grade microSD card for footage recording</p>	<p><b>4G LTE Wireless Access Point</b> LTE connectivity up to 150Mbps speeds 4G: FDD-B1/B2/B3/B4/B5/B7/B8/B28, TDD-B40 <i>*SIM card &amp; service charges not included</i></p>
Diagrams			



Crucial evidence. Always.™

Contact your local VIP Vision Solar CCTV professional:

[www.vipvision.au](http://www.vipvision.au)